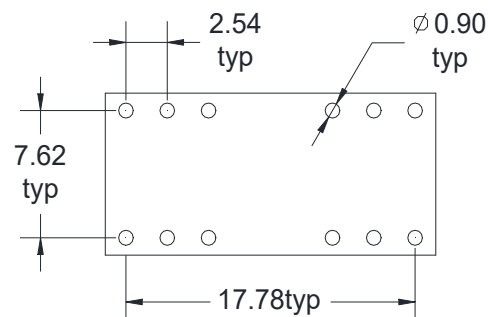
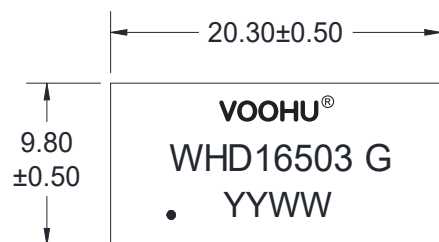
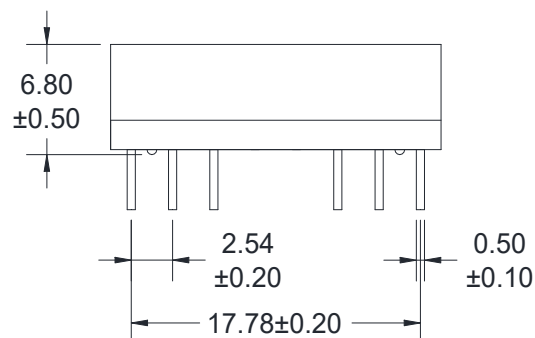


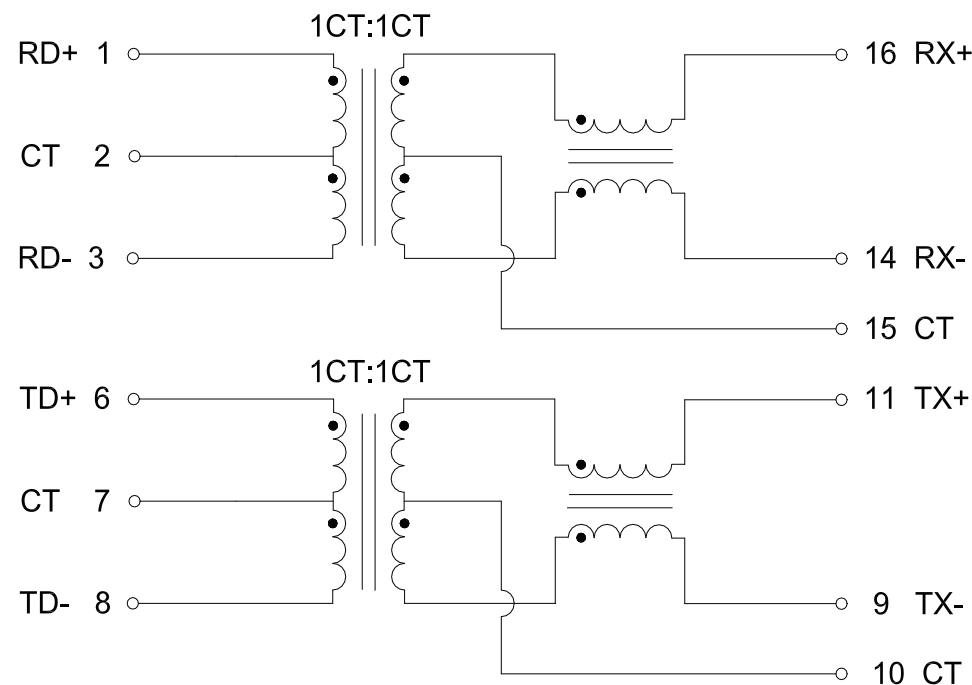
A. MECHANICAL(unit:mm)



SUGGESTED PAD LAYOUT



B. SCHEMATICS



VOOHU 苏州沃虎电子科技有限公司
Su Zhou Voohu Electronic Tech.Co.Ltd

TITLE:
10/100 BASE-TX

SIZE
A4

UNITS
MM[INCH]

GENERAL TOLERANCES
UNLESS SPECIFIED

APPROVED BY:
Geoffrey.Song

PART NO.:
WHD16503 G

SACLE
1:1

REV
A0

$x \pm 0.35$
 $.x \pm 0.30$
 $.xx \pm 0.25$
 $.xxx \pm 0.10$

$x^\circ \pm 3.0^\circ$
 $.x^\circ \pm 2.0^\circ$
 $.xx^\circ \pm 1.5^\circ$
 $.xxx^\circ \pm 1.0^\circ$

CHECKED BY:
Elvis.Song
DESIGN BY:
Sunny.Xu

TEL: +86 400 1048 018

WEB: WWW.WOHU-TEK.COM

REMARK:

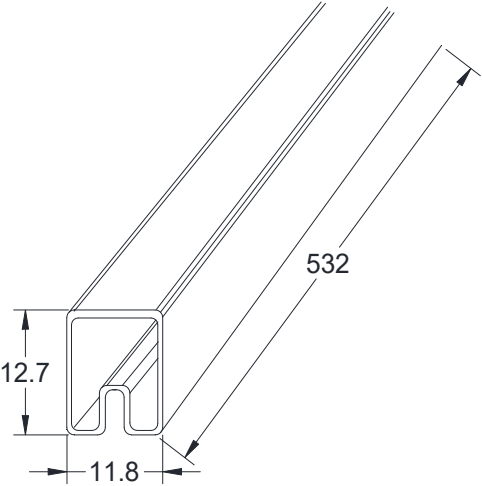
SHEET
1/4



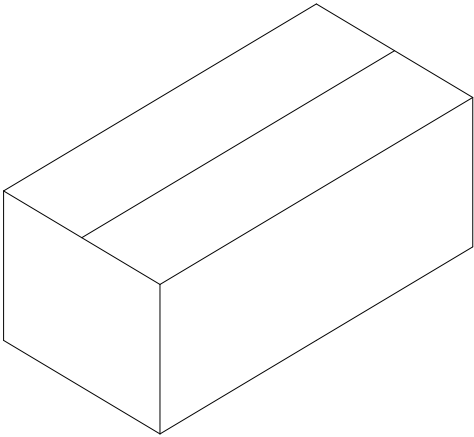
C. ELECTRICAL SPECIFICATIONS @25℃

- 1. OCL: 350uH Min @ 100 KHz, 0.1V with 8mA DC BIAS
- 2. Leakage Inductance: 0.5uH Max @ 100KHz, 0.1V
- 3. DCR: 1400mΩ Max
- 4. Turns Ratio: 1CT:1CT±5%
- 5. Insertion Loss: -1.1 dB Max @ 1-100 MHz
- 6. Return Loss: -18 dB Min @ 1-30 MHz
 - 14.4 dB Min @ 40 MHz
 - 13.1 dB Min @ 50 MHz
 - 12 dB Min @ 60-80 MHz
- 7. Cross Talk: -30 dB Min @ 1-100 MHz
- 8. Common Mode Rejection: -30 dB Min @ 1-100 MHz
- 9. Isolation Hipot: 1500VAC 1mA 60S
- 10. Operating temperature 0℃ to +70℃
- 11. Storage temperature -40℃ to +85℃

D. PACKAGE INFORMATION





Tube: 532*11.8*12.7mm



Carton: L550*W240*H210mm

Package Quantity:
One Tube=25Pcs
One Carton=25*320=8000Pcs

<div> 苏州沃虎电子科技有限公司 Su Zhou Voohu Electronic Tech.Co.Ltd</div>		TITLE: 10/100 BASE-TX	SIZE A4	UNITS MM[INCH]	GENERAL TOLERANCES UNLESS SPECIFIED		APPROVED BY: Geoffrey.Song
		PART NO.: WHD16503 G	SACLE 1:1	REV A0	x±0.35 .x±0.30	x°±3.0° .x°±2.0°	CHECKED BY: Elvis.Song
		REMARK:	SHEET 1/4		.xx±0.25 .xxx±0.10	.xx°±1.5° .xxx°±1.0°	DESIGND BY: Sunny.Xu
TEL: +86 400 1048 018 WEB: WWW.WOHU-TEK.COM							