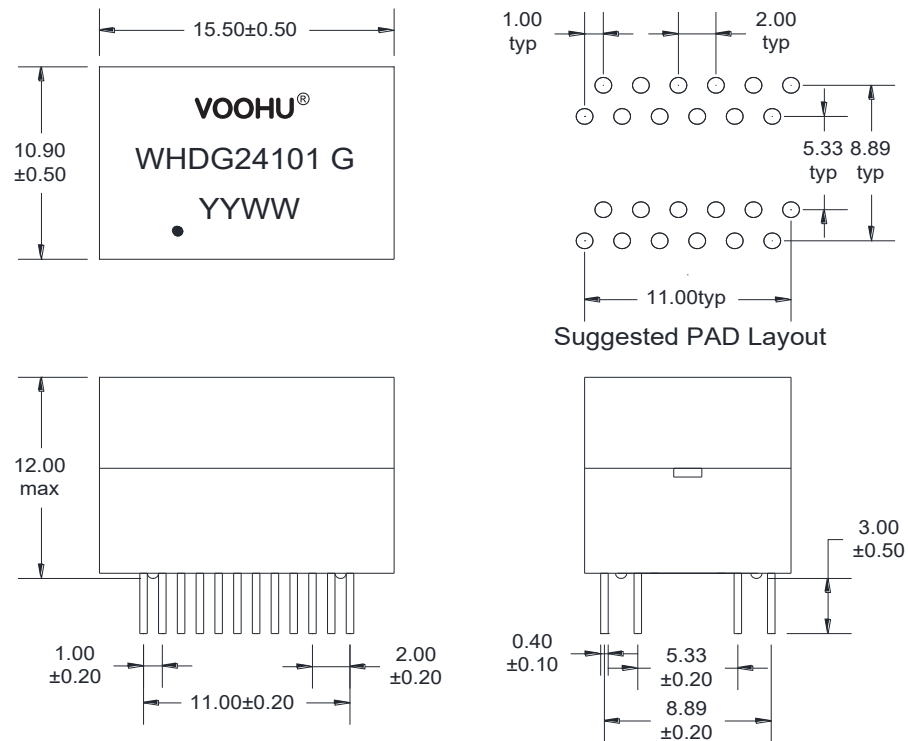
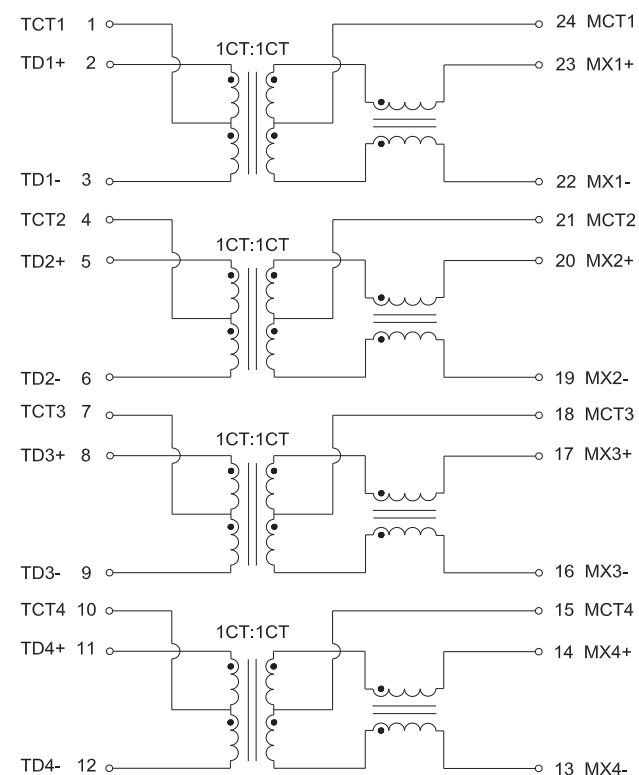


A. MECHANICAL(unit:mm)



B. SCHEMATICS



VOOHU 苏州沃虎电子科技有限公司
Su Zhou Voohu Electronic Tech.Co.Ltd

TEL: +86 400 1048 018

WEB: WWW.WOHU-TEK.COM

TITLE:
100/1000 BASE-T

PART NO.:
WHDG24101 G

REMARK:

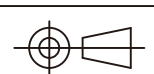
SIZE
A4

SACLE
1:1

SHEET
1/4

UNITS
MM[INCH]

REV
A0



GENERAL TOLERANCES
UNLESS SPECIFIED

$x \pm 0.35$
 $.x \pm 0.30$
 $.xx \pm 0.25$
 $.xxx \pm 0.10$

$x^\circ \pm 3.0^\circ$
 $.x^\circ \pm 2.0^\circ$
 $.xx^\circ \pm 1.5^\circ$
 $.xxx^\circ \pm 1.0^\circ$

APPROVED BY:
Geoffrey.Song

CHECKED BY:
Elvis.Song

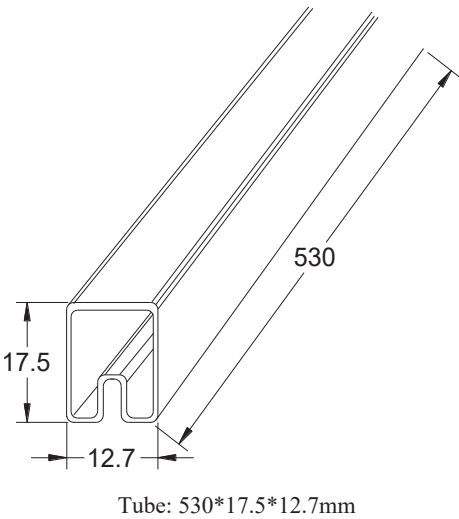
DESIGND BY:
Sunny.Xu

1	2	3	4	5	6	7	8
---	---	---	---	---	---	---	---

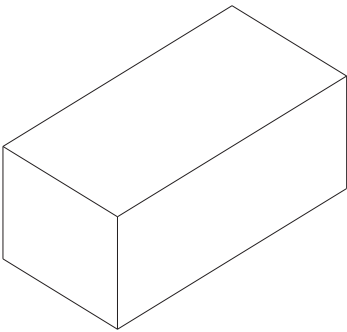
C. ELECTRICAL SPECIFICATIONS @25°C

1. OCL: 350uH Min @ 100KHz, 0.1V 8mA DC BIAS
2. Leakage Inductance: 0.5uH Max @ 100KHz, 0.1V
3. DCR: 1400mΩ Max
4. Turns Ratio: 1CT:1CT±5%
5. Insertion Loss: -1.1 dB Max @ 1-100 MHz
6. Return Loss: -18 dB Min @ 1-30 MHz
-14.4 dB Min @ 40 MHz
-13.1 dB Min @ 50 MHz
-12 dB Min @ 60-80 MHz
-10 dB Min @ 100 MHz
7. Cross Talk: -30 dB Min @ 1-100 MHz
8. Common Mode Rejection: -30 dB Min @ 1-100 MHz
9. Isolation Hipot: 1500VAC 1mA 60S
10. Operating temperature 0°C to +70°C
11. Storage temperature -40°C to +85°C

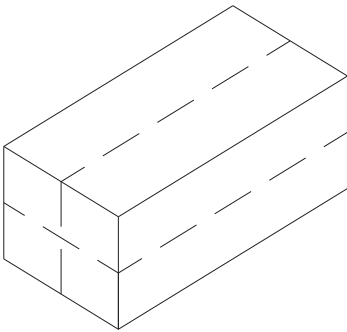
D. PACKAGE INFORMATION



Package Quantity:
One Tube=32Pcs
One Inner Carton=32*50=1600Pcs
One Export Carton=1600*4=6400Pcs



Inner Carton: L570*W180*H100mm



Export Carton: L580*W380*H240mm

<div><div>VOOHU</div><div>苏州沃虎电子科技有限公司</div><div>Su Zhou Voohu Electronic Tech.Co.Ltd</div></div>		TITLE: 100/1000 BASE-TX	SIZE A4	UNITS MM[INCH]	GENERAL TOLERANCES UNLESS SPECIFIED		APPROVED BY: Geoffrey.Song
		PART NO.: WHDG24101 G	SACLE 1:1	REV A0	.xx±0.25 .xxx±0.10	x°±3.0° .x°±2.0°	CHECKED BY: Elvis.Song
TEL: +86 400 1048 018 WEB: WWW.WOHU-TEK.COM		REMARK:	SHEET 1/4		.xx±0.25 .xxx±0.10	.xx°±1.5° .xxx°±1.0°	DESIGND BY: Sunny.Xu