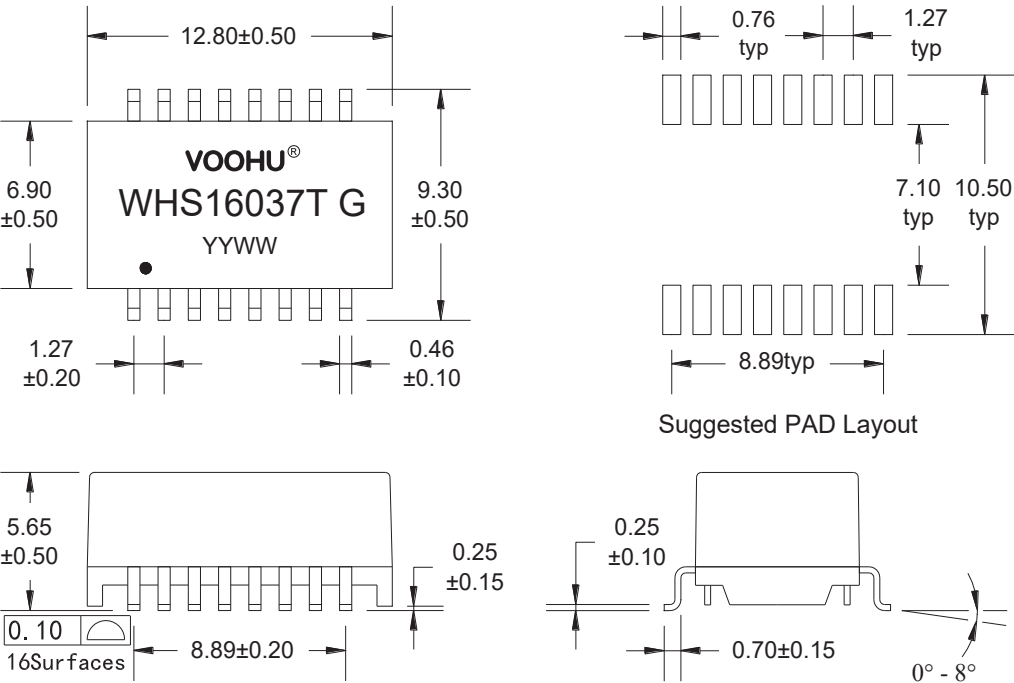
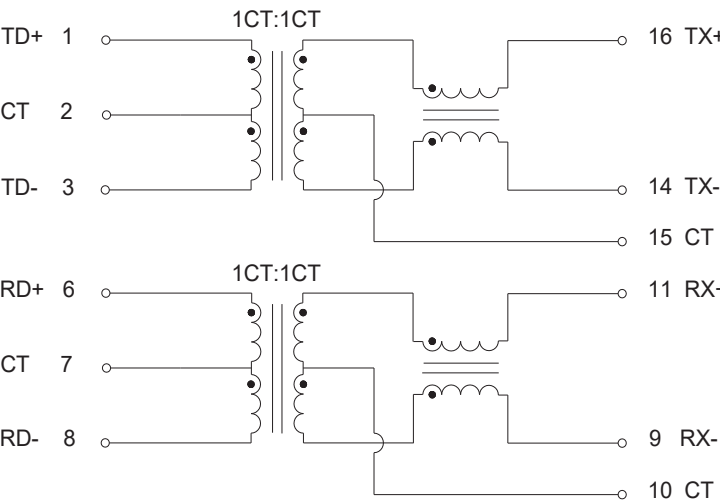


A. MECHANICAL(unit:mm)



B. SCHEMATICS



VOOHU 苏州沃虎电子科技有限公司
Su Zhou Voohu Electronic Tech.Co.Ltd

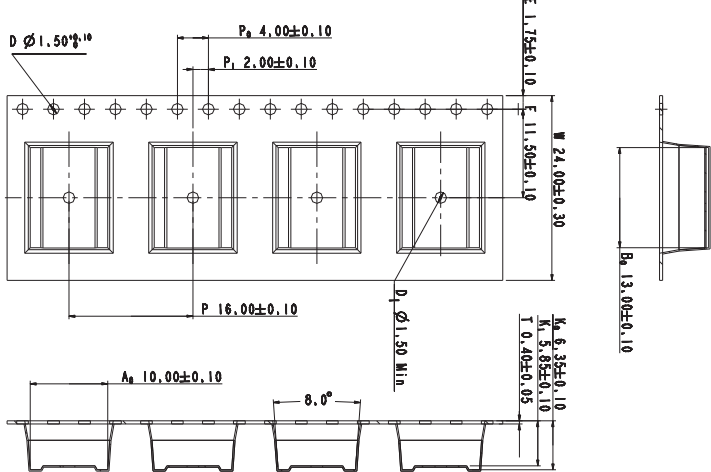
TEL: +86 400 1048 018 WEB: WWW.WOHU-TEK.COM

TITLE: 10/100 BASE-TX	SIZE A4	UNITS MM[INCH]	GENERAL TOLERANCES UNLESS SPECIFIED		APPROVED BY: Geoffrey.Song
PART NO.: WHS16037T G	SACLE 1:1	REV A0	x±0.35	x°±3.0°	CHECKED BY: Elvis.Song
			.x±0.30	.x°±2.0°	
REMARK:	SHEET 1/2		.xx±0.25	.xx°±1.5°	DESIGND BY: Sunny.Xu
			.xxx±0.10	.xxx°±1.0°	

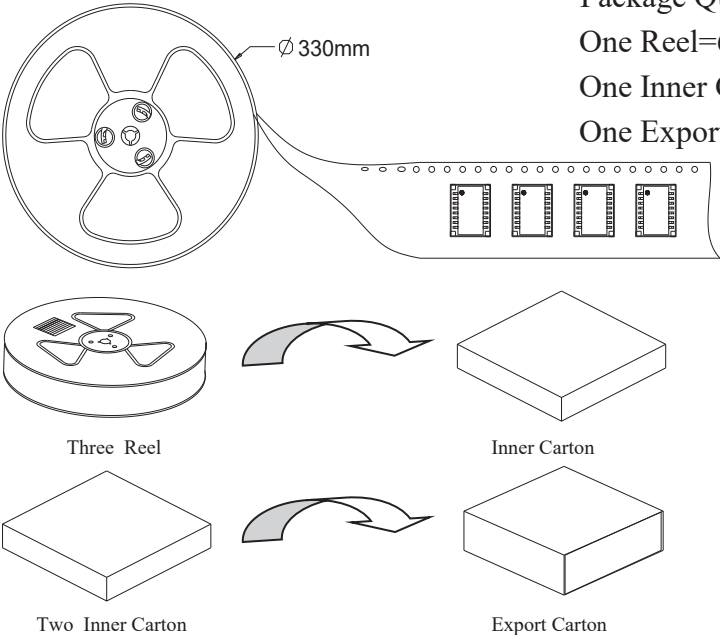
C. ELECTRICAL SPECIFICATIONS @25°C

- 1. OCL: 350uH Min @ 100 KHz, 0.1V with 8mA DC BIAS
- 2. Leakage Inductance: 0.5uH Max @ 100KHz, 0.1V
- 3. DCR: 1400mΩ Max
- 4. Turns Ratio: 1CT:1CT±5%
- 5. Insertion Loss: -1.1 dB Max @ 1-100 MHz
- 6. Return Loss: -18 dB Min @ 1-30 MHz
 - 14.4 dB Min @ 40 MHz
 - 13.1 dB Min @ 50 MHz
 - 12 dB Min @ 60-80 MHz
- 7. Cross Talk: -30 dB Min @ 1-100 MHz
- 8. Common Mode Rejection: -30 dB Min @ 1-100 MHz
- 9. Isolation Hipot: 1500VAC 1mA 60S
- 10. Operating temperature -40°C to +85°C
- 11. Storage temperature -40°C to +85°C

D. PACKAGE INFORMATION



Package Quantity:
One Reel=600Pcs
One Inner Carton=600*3=1800Pcs
One Export Carton=1800*2=3600Pcs



VOOHU 苏州沃虎电子科技有限公司
Su Zhou Voohu Electronic Tech.Co.Ltd

TITLE: 10/100 BASE-TX	SIZE A4	UNITS MM[INCH]	GENERAL TOLERANCES UNLESS SPECIFIED		APPROVED BY: Geoffrey.Song
PART NO.: WHS16037T G	SACLE 1:1	REV A0	$x \pm 0.35$	$x^\circ \pm 3.0^\circ$	CHECKED BY: Elvis.Song
			$.x \pm 0.30$	$.x^\circ \pm 2.0^\circ$	
REMARK:	SHEET 2/2		$.xx \pm 0.25$	$.xx^\circ \pm 1.5^\circ$	DESIGND BY: Sunny.Xu
			$.xxx \pm 0.10$	$.xxx^\circ \pm 1.0^\circ$	

TEL: +86 400 1048 018 WEB: WWW.WOHU-TEK.COM