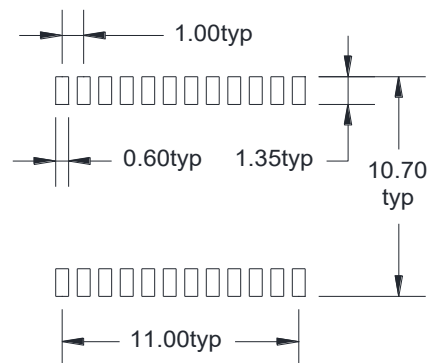
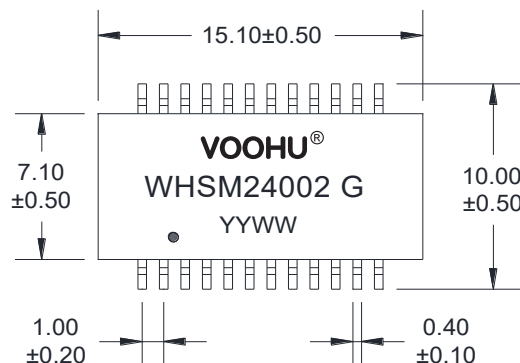
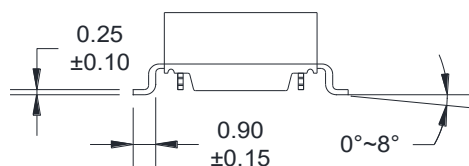
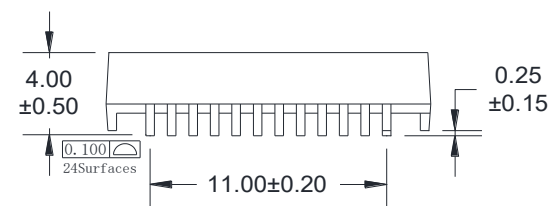


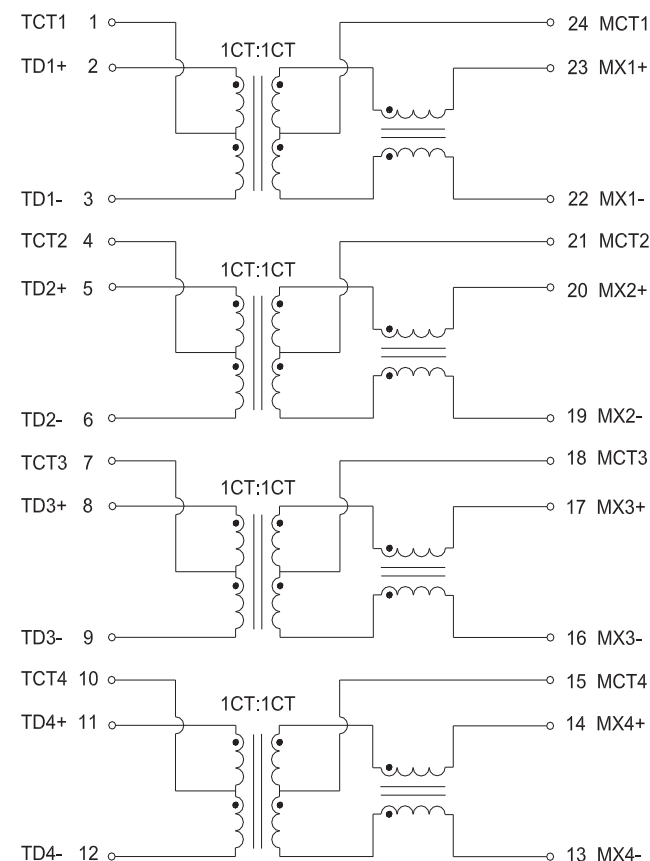
# A. MECHANICAL(unit:mm)



Suggested PAD Layout



# B. SCHEMATICS



**VOOHU** 苏州沃虎电子科技有限公司  
Su Zhou Voohu Electronic Tech.Co.Ltd

TITLE:  
10G BASE-T

SIZE  
A4

UNITS  
MM[INCH]

GENERAL TOLERANCES  
UNLESS SPECIFIED

APPROVED BY:  
Geoffrey.Song

PART NO.:  
WHSM24002 G

SACLE  
1:1

REV  
A0

$x \pm 0.35$   
 $.x \pm 0.30$   
 $.xx \pm 0.25$   
 $.xxx \pm 0.10$

$x^\circ \pm 3.0^\circ$   
 $.x^\circ \pm 2.0^\circ$   
 $.xx^\circ \pm 1.5^\circ$   
 $.xxx^\circ \pm 1.0^\circ$

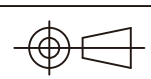
CHECKED BY:  
Elvis.Song  
DESIGND BY:  
Sunny.Xu

TEL: +86 400 1048 018

WEB: [WWW.WOHU-TEK.COM](http://WWW.WOHU-TEK.COM)

REMARK:

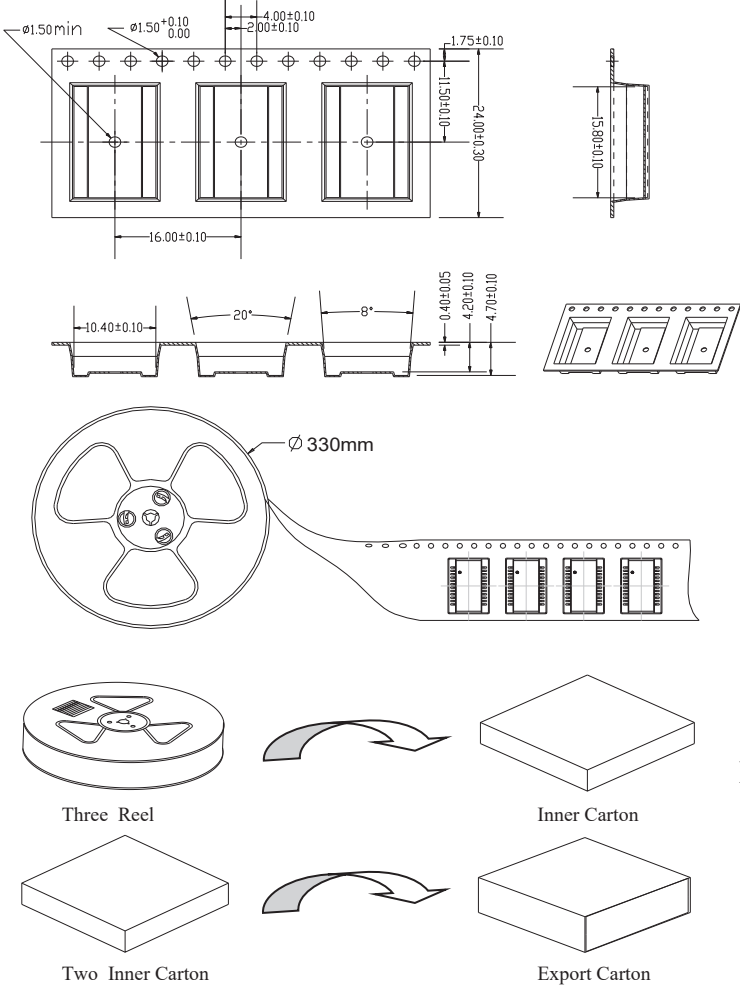
SHEET  
1/2




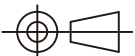
C. ELECTRICAL SPECIFICATIONS @25°C

- 1. OCL: 120 uH Min @100KHz 0.1V
- 2. Leakage Inductance: 0.5uH Max @ 100KHz, 0.1V
- 3. DCR: 900mΩ Max
- 4. Turns Ratio: 1CT:1CT±5%
- 5. Insertion Loss: -1.2dB max @ 1~200 MHz
  - 1.5dB max @ 200~300 MHz
  - 2.0dB max @ 300~400 MHz
  - 3.0dB max @ 400~500 MHz
- 6. Return Loss: -18 dB Min @ 1~100 MHz
  - 16 dB Min @ 100~200 MHz
  - 12 dB Min @ 200~300 MHz
  - 10 dB Min @ 300~400 MHz
  - 8 dB Min @ 400~500 MHz
- 7. Cross Talk: -25 dB Typ @ 1-500 MHz
- 8. Common Mode Rejection: -20 dB Typ @ 1-500 MHz
- 9. Isolation Hipot: 1500VAC 1mA 60S
- 10. Operating temperature 0°C to +70°C
- 11. Storage temperature -40°C to +85°C

D. PACKAGE INFORMATION



Package Quantity:  
One Reel=800Pcs  
One Inner Carton=800\*3=2400Pcs  
One Export Carton=2400\*2=4800Pcs

 苏州沃虎电子科技有限公司 Su Zhou Voohu Electronic Tech.Co.Ltd		TITLE: 10G BASE-T	SIZE A4	UNITS MM[INCH]	GENERAL TOLERANCES UNLESS SPECIFIED		APPROVED BY: Geoffrey.Song
		PART NO.: WHSM24002 G	SACLE 1:1	REV A0	x±0.35 .x±0.30	x°±3.0° .x°±2.0°	CHECKED BY: Elvis.Song
TEL: +86 400 1048 018      WEB: <a href="http://WWW.WOHU-TEK.COM">WWW.WOHU-TEK.COM</a>		REMARK:	SHEET 2/2		.xx±0.25 .xxx±0.10	.xx°±1.5° .xxx°±1.0°	DESIGND BY: Sunny.Xu