

Specification for Approval

产品承认书

Customer:	
Customer P/N:	
VOOHU P/N:	WHSQ48002G
Version No.:	V0.1
Description:	100/1000 BASE-T
	Laser Marking

SUZHOU VOOHU Company Approval		Customer Approval (客户承认签章)
DRAWN	Geoffrey.Song	
CHECKED	Sunny.Xu	
APPROVED	Elvis. Song	
日期DATE::2024/7/13		日期DATE:

Please Return One Copy to Us After Approved,TKS! (承认后请回寄一份,谢谢)

VOOHU 沃虎

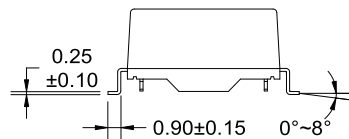
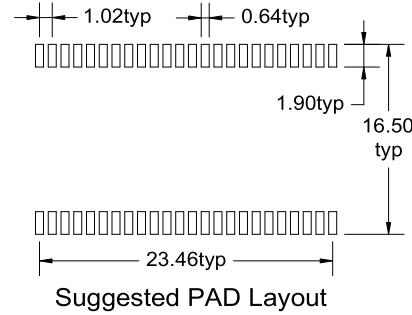
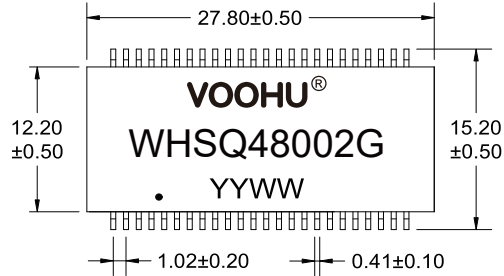
—— 连接世界 · 通信未来 ——

苏州沃虎电子科技有限公司
SuZhou Voohu Electronic Tech.Co.,Ltd

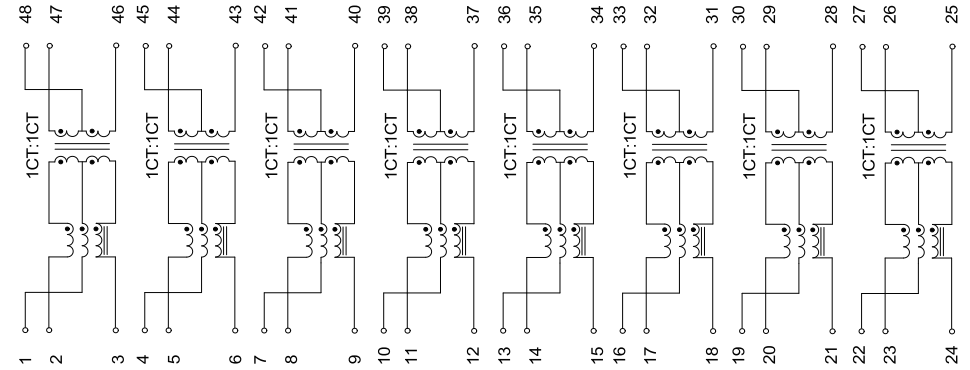
地址：江苏省苏州市吴江区阿尔法大厦A栋
ADD: Building A, Alpha Building, Wujiang District,
Suzhou City, Jiangsu Province

TEL: +86 400 1048 018 WEB: www.wohu-tek.com/
+86 13338655578 E-MAIL: wohu@wohu-tek.com

A. MECHANICAL(unit:mm)



B. SCHEMATICS



C. ELECTRICAL SPECIFICATIONS @25℃

Unless Otherwise Specified, Testing is Performed at $25^\circ\text{C} \pm 5^\circ\text{C}$

1. OCL: 200uH Min @ 100KHz, 0.1V
2. Leakage Inductance: 0.5uH Max @ 100KHz, 0.1V
3. DCR: 1000mΩ Max
4. Turns Ratio: 1CT:1CT \pm 5%
5. Insertion Loss: -1.0 dB Max @ 1-100 MHz
-2.0 dB Max @ 100-250 MHz
6. Return Loss: -16 dB Min @ $1 \leq f \leq 40$ MHz
-16+10log(f/40) dB Min @ $40 < f \leq 250$ MHz, where f is in MHz
7. Cross Talk: -30 dB Typ @ 1-250 MHz
8. Common Mode Rejection Ratio: -30 dB Typ @ 1-250 MHz
9. Isolation Hipot: 1500VAC 1mA 60S
10. Operating temperature 0°C to $+70^\circ\text{C}$
11. Storage temperature -40°C to $+85^\circ\text{C}$

VOOHU 苏州沃虎电子科技有限公司
Su Zhou Voohu Electronic Tech.Co.Ltd

TITLE:
100/1000 BASE-T

PART NO.:
WHSQ48002G

REMARK:

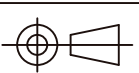
SIZE
A4

SACLE
1:1

SHEET
1/2

UNITS
MM[INCH]

REV
A0



GENERAL TOLERANCES
UNLESS SPECIFIED

$x \pm 0.35$
 $.x \pm 0.30$

$.xx \pm 0.25$
 $.xxx \pm 0.10$

$x^\circ \pm 3.0^\circ$
 $.x^\circ \pm 2.0^\circ$

$.xx^\circ \pm 1.5^\circ$
 $.xxx^\circ \pm 1.0^\circ$

APPROVED BY:
Geoffrey.Song

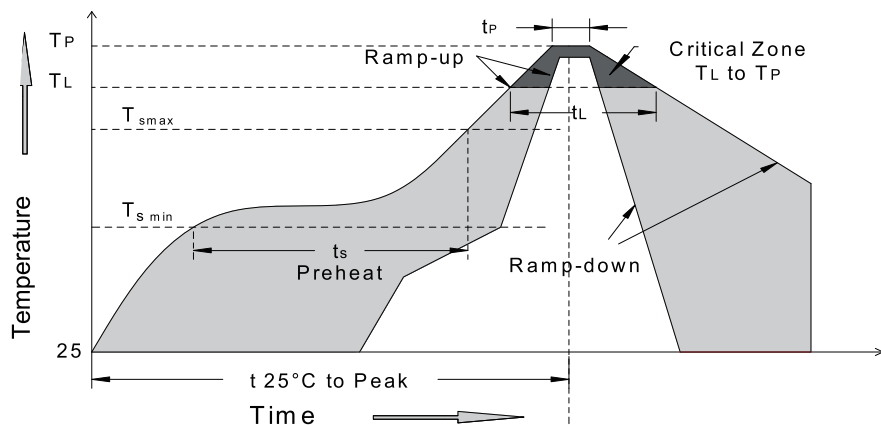
CHECKED BY:
Elvis.Song

DESIGND BY:
Sunny.Xu

TEL: +86 400 1048 018

WEB: WWW.WOHU-TEK.COM

D. RECOMMEND REFLOW SOLDERING CURVE



MSL:

Grade: 1 level. Floor life: 0.5 year Condition: $\leq 30^{\circ}\text{C}/60\%\text{RH}$.

Ramp up rate= $3^{\circ}\text{C}/\text{s}$ max Ramp down rate= $6^{\circ}\text{C}/\text{s}$ max

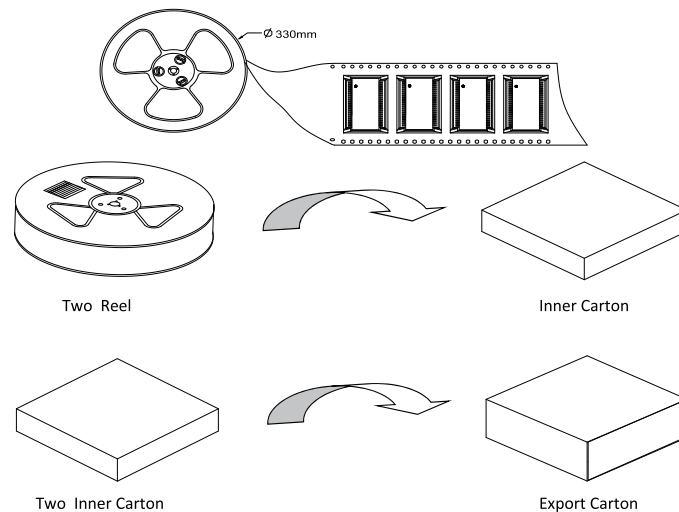
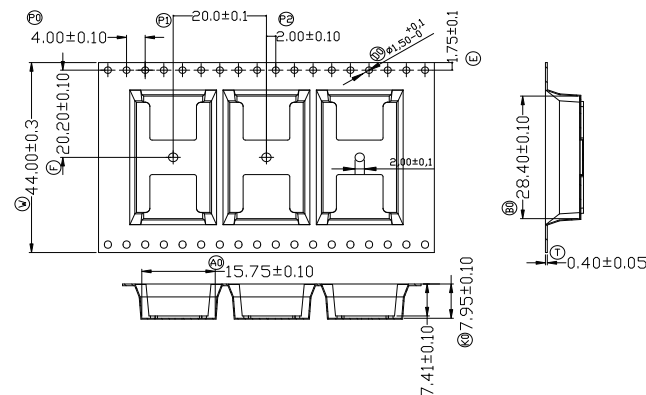
TL= 217°C tL=60s-150s Tp= $250\pm 3^{\circ}\text{C}$ Time within 5°C of actual Peak Temperature

(tp): 20~40s

Ts min= 150°C Ts max= 200°C Ts min to Ts max: 60s-180s, 25°C to peak Temperature:

8minutes max

E. PACKAGE INFORMATION



Package Quantity:

One Reel=350Pcs

One Inner Carton=350*2=700Pcs

One Export Carton=700*2=1400Pcs

VOOHU 苏州沃虎电子科技有限公司
Su Zhou Voohu Electronic Tech.Co.Ltd

TITLE:
100/1000 BASE-T

PART NO.:
WHSQ48002G

REMARK:

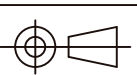
SIZE
A4

SACLE
1:1

SHEET
2/2

UNITS
MM[INCH]

REV
A0



GENERAL TOLERANCES
UNLESS SPECIFIED

$x\pm 0.35$
 $.x\pm 0.30$
 $.xx\pm 0.25$
 $.xxx\pm 0.10$

$x^{\circ}\pm 3.0^{\circ}$
 $.x^{\circ}\pm 2.0^{\circ}$
 $.xx^{\circ}\pm 1.5^{\circ}$
 $.xxx^{\circ}\pm 1.0^{\circ}$

APPROVED BY:
Geoffrey.Song

CHECKED BY:
Elvis.Song

DESIGND BY:
Sunny.Xu

TEL: +86 400 1048 018

WEB: WWW.WOHU-TEK.COM