

Specification for Approval

产品承认书

Customer:

Customer P/N:

VOOHU P/N:

WHS24303G

Version No.:

V0.1

Description:

100/1000 BASE-T

Laser Marking

SUZHOU VOOHU Company Approval		Customer Approval (客户承认签章)
DRAWN	Geoffrey.Song	
CHECKED	Sunny.Xu	
APPROVED	Elvis. Song	
日期DATE::2024/7/13		日期DATE:

Please Return One Copy to Us After Approved,TKS! (承认后请回寄一份,谢谢)

VOOHU 沃虎

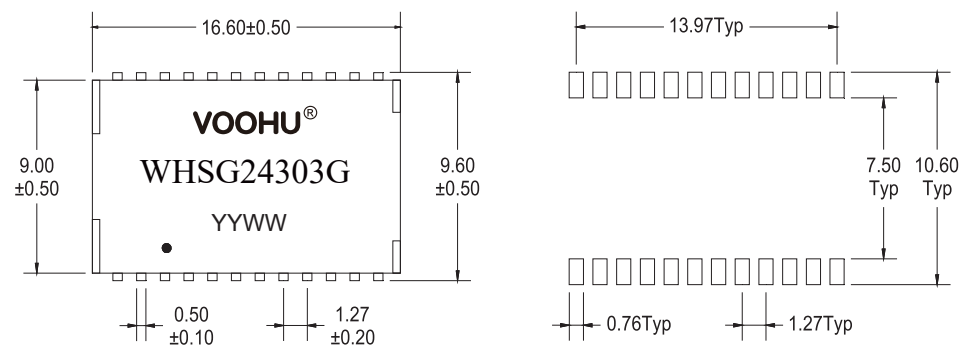
—— 连接世界 · 通信未来 ——

苏州沃虎电子科技有限公司
SuZhou Voohu Electronic Tech.Co.,Ltd

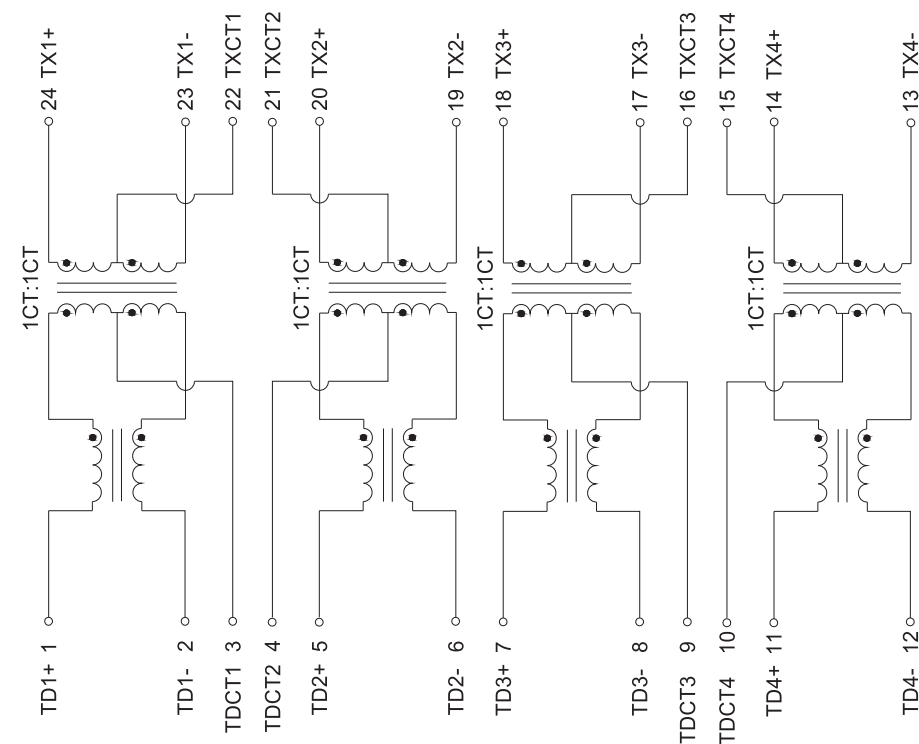
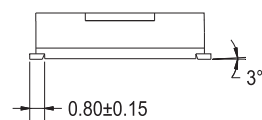
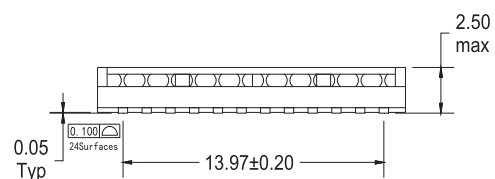
地址：江苏省苏州市吴江区阿尔法大厦A栋
ADD: Building A, Alpha Building, Wujiang District,
Suzhou City, Jiangsu Province


TEL: +86 400 1048 018 WEB: www.wohu-tek.com/
+86 13338655578 E-MAIL: wohu@wohu-tek.com

B. SCHEMATICS



SUGGESTED PAD LAYOUT



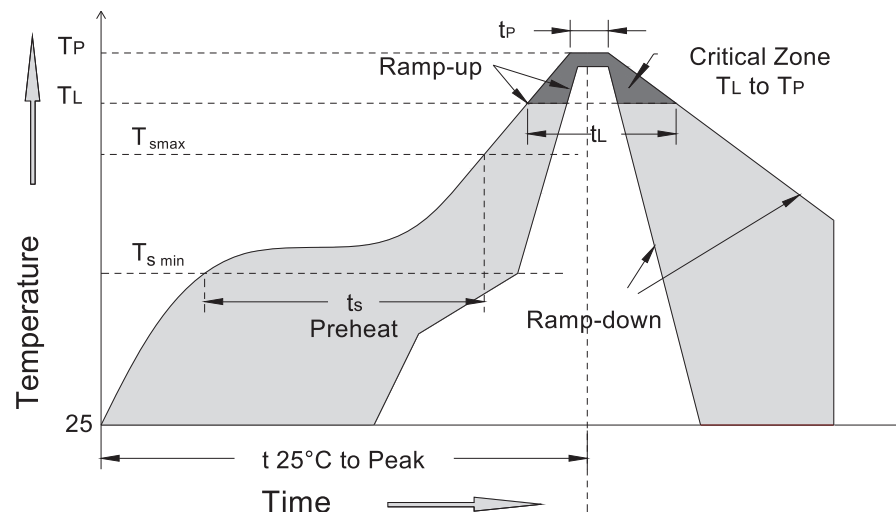
<div><div>VOOHU</div><div>苏州沃虎电子科技有限公司</div><div>Su Zhou Voohu Electronic Tech.Co.Ltd</div></div>		TITLE: 100/1000 BASE-T	SIZE A4	UNITS MM[INCH]	GENERAL TOLERANCES UNLESS SPECIFIED		APPROVED BY: Geoffrey.Song
		PART NO.: WHSG24303G	SACLE 1:1	REV A0	x±0.35 .x±0.30	x°±3.0° .x°±2.0°	CHECKED BY: Elvis.Song
TEL: +86 400 1048 018	WEB: WWW.WOHU-TEK.COM	REMARK:	SHEET 1/3		.xx±0.25 .xxx±0.10	.xx°±1.5° .xxx°±1.0°	DESIGND BY: Sunny.Xu

C. ELECTRICAL SPECIFICATIONS @25°C

Unless Otherwise Specified, Testing is Performed at 25°C ± 5°C

- 1. OCL: 350uH Min @ 100KHz, 0.1V
- 2. Leakage Inductance: 0.5uH Max @ 100KHz, 0.1V
- 3. DCR: 1400mΩ Max
- 4. Turns Ratio: 1CT:1CT±5%
- 5. Insertion Loss: -1.1 dB Max @ 1-100 MHz
- 6. Return Loss: -18 dB Min @ 1-30 MHz
 - 14.4 dB Min @40 MHz
 - 13.1 dB Min @ 50 MHz
 - 12 dB Min @ 60-80 MHz
 - 10 dB Min @ 100 MHz
- 7. Cross Talk: -30 dB Min @ 1-100 MHz
- 8. Common Mode Rejection: -30 dB Min @ 1-100 MHz
- 9. Isolation Hipot: 1500VAC 1mA 60S
- 10. Operating temperature 0°C to +70°C
- 11. Storage temperature -40°C to +85°C

D. RECOMMEND REFLOW SOLDERING CURVE



MSL:

Grade: 1 level. Floor life: 0.5 year Condition:≤30°C/60%RH.

Ramp up rate=3°C/s max Ramp down rate=6°C/s max

TL=217°C tL=60s-150s Tp=250+/-3°C Time within 5°C of actual Peak Temperature

(tp): 20~40s

Ts min=150°C Ts max=200°C Ts min to Ts max: 60s-180s, 25°C to peak Temperature:

8minutes max

VOOHU 苏州沃虎电子科技有限公司
Su Zhou Voohu Electronic Tech.Co.Ltd

TITLE:
100/1000 BASE-T

PART NO.:
WHS G24303G

REMARK:

SIZE
A4

SACLE
1:1

SHEET
2/3

UNITS
MM[INCH]

REV
A0



GENERAL TOLERANCES
UNLESS SPECIFIED

x±0.35	x°±3.0°
.x±0.30	.x°±2.0°
.xx±0.25	.xx°±1.5°
.xxx±0.10	.xxx°±1.0°

APPROVED BY:
Geoffrey.Song

CHECKED BY:
Elvis.Song

DESIGND BY:
Sunny.Xu

TEL: +86 400 1048 018

WEB: WWW.WOHU-TEK.COM

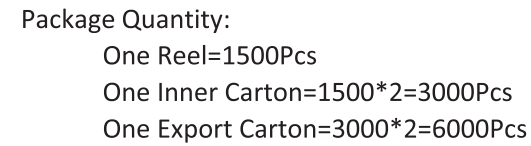
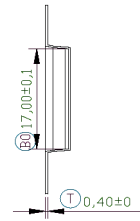
Technical drawing of a window unit showing elevation and section views with dimensions and callouts.



Elevation View (Top):

- Overall height: $32,00 \pm 0,3$ (callout V)
- Height from bottom to first horizontal mullion: $14,20 \pm 0,1$ (callout F)
- Height from top to first horizontal mullion: $1,75 \pm 0,1$ (callout E)
- Horizontal spacing between vertical mullions:
 - Between first and second mullion: $4,00 \pm 0,1$ (callout P0)
 - Between second and third mullion: $16,00 \pm 0,1$ (callout P1)
 - Between third and fourth mullion: $2,00 \pm 0,1$ (callout P2)
- Overall width: $1,50 \pm 0,1$ (callout Ø1,50)
- Vertical mullions are labeled P0, P1, P2, P3, P4, P5.
- Horizontal mullions are labeled F, E.

Section View (Bottom Right):

- Width: $10,20 \pm 0,1$ (callout A0)
- Height: 3 (callout 3)
- Height from bottom to top of frame: $\pm 0,1$ (callout ±0,1)



<div> 苏州沃虎电子科技有限公司</div> <div>Su Zhou Voohu Electronic Tech.Co.Ltd</div>		TITLE: 100/1000 BASE-T	SIZE A4	UNITS MM[INCH]	GENERAL TOLERANCES UNLESS SPECIFIED		APPROVED BY: Geoffrey.Song
		PART NO.: WHS24303G	SACLE 1:1	REV A0	x±0.35	x°±3.0°	CHECKED BY: Elvis.Song
					.x±0.30	.x°±2.0°	
TEL: +86 400 1048 018	WEB: WWW.WOHU-TEK.COM	REMARK:	SHEET 3/3		.xx±0.25 .xxx±0.10	.xx°±1.5° .xxx°±1.0°	DESIGND BY: Sunny.Xu