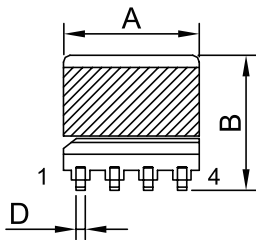
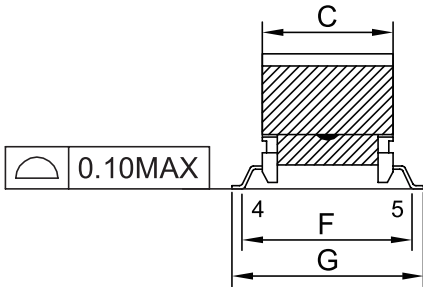


REACH & RoHS
COMPLIANT

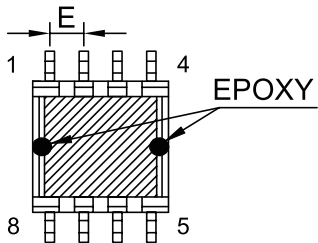
1. OUTLINE DIMENSION:(UNIT:mm)/外形尺寸（单位：mm）



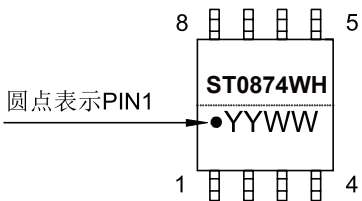
ELEVATION



SIDE VIEW




BOTTOM VIEW



- NOTE:
- 1.N1绕组交叉.
 - 2.所有绝缘胶带为茶色高温胶带.
 - 3.磁芯单边开气隙(装于PIN1-4侧), 外包5mm胶带2Ts.
 - 4.底部磁芯接合处点黑胶固定并连接线包上.(如图)
 - 5.产品平贴度0.1mm MAX.
 - 6.产品含浸.
 - 7.产品顶部印标签,要求激光镭射.
 - 8.PIN5,6连锡;PIN7,8连锡.

A	B	C	D	E	F	G
10.0MAX	10.5MAX	9.0MAX	0.70±0.1	2.5±0.3	7.5±0.3	8.9±0.5

<div><div>VOOHU</div><div>苏州沃虎电子科技有限公司</div><div>Su Zhou Voohu Electronic Tech.Co.Ltd</div></div>		TITLE: 变压器/TRANSFORMER	SIZE A4	UNITS MM[INCH]	GENERAL TOLERANCES UNLESS SPECIFIED		APPROVED BY: Geoffrey.Song
		PART NO.: ST0874WH	SACLE 1:1	REV A0	x±0.35 .x±0.30	x°±3.0° .x°±2.0°	CHECKED BY: Elvis.Song
TEL: +86 400 1048 018	WEB: WWW.WOHU-TEK.COM	REMARK:	SHEET 1/3		.xx±0.25 .xxx±0.10	.xx°±1.5° .xxx°±1.0°	DESIGND BY: Sunny.Xu

1		2	3	4	5	6	7	8																																		
REACH & RoHS COMPLIANT																																										
2. CIRCUIT DIAGRAM/电气原理图				3. CONSTRUCTION DIAGRAM/内部结构图																																						
<div><div><div>PRI</div><div>1</div><div>2</div><div>3</div><div>4</div><div>N1</div><div>N3</div></div><div>SEC</div><div>7,8</div><div>N2</div><div>5,6</div></div> <div><div>●</div>START</div> <div>PIN5,6 & PIN7,8分别在PCB上短接在一起.</div>				<div><div>PIN1-4</div><div>PIN5-8</div><div>2Ts</div><div>2Ts</div><div>2Ts</div><div>N3</div><div>N2</div><div>N1</div><div>CORE</div></div>																																						
4.WINDING INFORMATIONS TABLE/绕制明细表																																										
<table><tr><th rowspan="2">绕组 WINDING</th><th colspan="2">挡墙胶带 MARGIN TAPE</th><th rowspan="2">起始-收尾 S - F</th><th rowspan="2">线材 WIRE</th><th rowspan="2">圈数 TURNS</th><th rowspan="2">绝缘胶带 TAPE 4mm</th><th rowspan="2">备注 REMARK</th></tr><tr><th>PIN1-4 SIDE</th><th>PIN5-8 SIDE</th></tr><tr><td>N1</td><td>/</td><td>/</td><td>1--2</td><td>2UEW-H Ø0.18*2P</td><td>18Ts</td><td>2Ts</td><td>密绕/CLOSE</td></tr><tr><td>N2</td><td>/</td><td>/</td><td>5,6--7,8</td><td>2UEW-H Ø0.28*2P</td><td>11Ts</td><td>2Ts</td><td>密绕/CLOSE</td></tr><tr><td>N3</td><td>/</td><td>/</td><td>4--3</td><td>2UEW-H Ø0.15</td><td>5Ts</td><td>2Ts</td><td>散绕/SPACE</td></tr></table>		绕组 WINDING	挡墙胶带 MARGIN TAPE		起始-收尾 S - F	线材 WIRE	圈数 TURNS	绝缘胶带 TAPE 4mm	备注 REMARK	PIN1-4 SIDE	PIN5-8 SIDE	N1	/	/	1--2	2UEW-H Ø0.18*2P	18Ts	2Ts	密绕/CLOSE	N2	/	/	5,6--7,8	2UEW-H Ø0.28*2P	11Ts	2Ts	密绕/CLOSE	N3	/	/	4--3	2UEW-H Ø0.15	5Ts	2Ts	散绕/SPACE	<div>1.N1绕组交叉.</div> <div>2.所有绝缘胶带为茶色高温胶带.</div> <div>3.PIN3,4共一个槽.</div> <div>4.PIN5,6连锡;PIN7,8连锡.</div>						
绕组 WINDING	挡墙胶带 MARGIN TAPE		起始-收尾 S - F	线材 WIRE						圈数 TURNS	绝缘胶带 TAPE 4mm	备注 REMARK																														
	PIN1-4 SIDE	PIN5-8 SIDE																																								
N1	/	/	1--2	2UEW-H Ø0.18*2P	18Ts	2Ts	密绕/CLOSE																																			
N2	/	/	5,6--7,8	2UEW-H Ø0.28*2P	11Ts	2Ts	密绕/CLOSE																																			
N3	/	/	4--3	2UEW-H Ø0.15	5Ts	2Ts	散绕/SPACE																																			
<div><div>VOOHU</div><div>苏州沃虎电子科技有限公司</div><div>Su Zhou Voohu Electronic Tech.Co.Ltd</div></div> <div>TEL: +86 400 1048 018</div> <div>WEB: WWW.WOHU-TEK.COM</div>				TITLE: 变压器/TRANSFORMER		SIZE A4	UNITS MM[INCH]	GENERAL TOLERANCES UNLESS SPECIFIED		APPROVED BY: Geoffrey.Song																																
				PART NO.: ST0874WH		SACLE 1:1	REV A0	<div>x±0.35</div> <div>.x±0.30</div>	<div>x°±3.0°</div> <div>.x°±2.0°</div>	CHECKED BY: Elvis.Song																																
				REMARK:		SHEET 2/3		<div>.xx±0.25</div> <div>.xxx±0.10</div>	<div>.xx°±1.5°</div> <div>.xxx°±1.0°</div>	DESIGND BY: Sunny.Xu																																

1		2		3		4		5		6		7		8	
REACH & RoHS COMPLIANT		5. CHARACTERISTIC /电气性能													
		NO. 序号	ITEM 项目	TERT POINT 测试点	TECHNICAL CRITERION 技术标准		TEST CONDITION & INSTRUMENT 测试条件&仪器								
		1	INDUCTANCE 电感	L (1-2)	21uH±10%		CHROMA3250(100Ω) 100KHz/1V AT 25℃								
		2	LEAKAGE INDUCTANCE 漏感	LK(1-2) SHORT OTHER PINS	1uH MAX		CHROMA3250(100Ω) 100KHz/1V AT 25℃								
		3	DCR 直流电阻	R(1-2)	150mΩ MAX		TH2511 AT25℃								
				R(4-3)	165mΩ MAX										
				R(5,6-7,8)	50mΩ MAX										
		4	HI-POT 抗电强度	PRI-SEC	AC1500V		CHROMA19053 1mA 3SEC 50Hz								
				PRI-CORE	AC500V										
				SEC-CORE	AC500V										
		5	INSULATION RESISTANCE 绝缘电阻	PRI-SEC	100MΩ MIN		CHROMA19053 DC 500V								
				PRI-CORE	100MΩ MIN										
				SEC-CORE	100MΩ MIN										
		6	OPERATING TEMPERATURE (INCLUDING SELF TEMPERATURE RISE)		-40℃ TO 125℃		Between-20℃ to 80℃ test inductance and resistance on the basis of 25℃, The variation shall not exceed 20%.								
		7	STORAGE TEMPERATURE		-40℃ TO 125℃										
<div>VOOHU</div> 苏州沃虎电子科技有限公司 Su Zhou Voohu Electronic Tech.Co.Ltd				TITLE: 变压器/TRANSFORMER		SIZE A4	UNITS MM[INCH]	GENERAL TOLERANCES UNLESS SPECIFIED		APPROVED BY: Geoffrey.Song					
				PART NO.: ST0874WH		SACLE 1:1	REV A0	x±0.35 .x±0.30	x°±3.0° .x°±2.0°	CHECKED BY: Elvis.Song					
				REMARK:		SHEET 3/3		.xx±0.25 .xxx±0.10	.xx°±1.5° .xxx°±1.0°	DESIGND BY: Sunny.Xu					
TEL: +86 400 1048 018		WEB: WWW.WOHU-TEK.COM													
1		2		3		4		5		6		7		8	

NO. 序号	ITEM 项目	TERT POINT 测试点	TECHNICAL CRITERION 技术标准	TEST CONDITION & INSTRUMENT 测试条件&仪器
1	INDUCTANCE 电感	L (1-2)	21uH±10%	CHROMA3250(100Ω) 100KHz/1V AT 25℃
2	LEAKAGE INDUCTANCE 漏感	LK(1-2) SHORT OTHER PINS	1uH MAX	CHROMA3250(100Ω) 100KHz/1V AT 25℃
3	DCR 直流电阻	R(1-2)	150mΩ MAX	TH2511 AT25℃
		R(4-3)	165mΩ MAX	
		R(5,6-7,8)	50mΩ MAX	
4	HI-POT 抗电强度	PRI-SEC	AC1500V	CHROMA19053 1mA 3SEC 50Hz
		PRI-CORE	AC500V	
		SEC-CORE	AC500V	
5	INSULATION RESISTANCE 绝缘电阻	PRI-SEC	100MΩ MIN	CHROMA19053 DC 500V
		PRI-CORE	100MΩ MIN	
		SEC-CORE	100MΩ MIN	
6	OPERATING TEMPERATURE (INCLUDING SELF TEMPERATURE RISE)		-40℃ TO 125℃	
7	STORAGE TEMPERATURE		-40℃ TO 125℃	

Between-20℃ to 80℃ test inductance and resistance on the basis of 25℃,
The variation shall not exceed 20%.