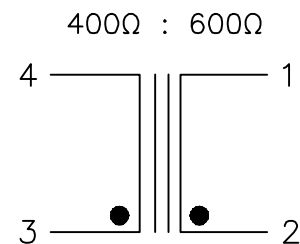
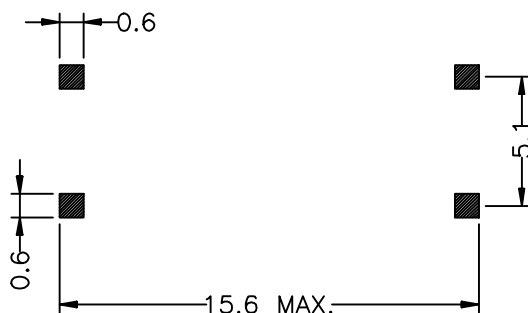
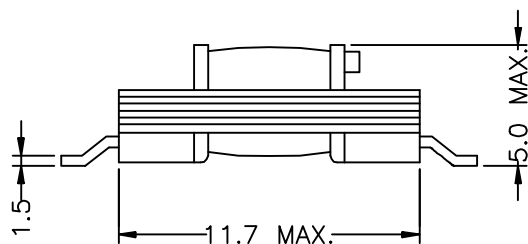
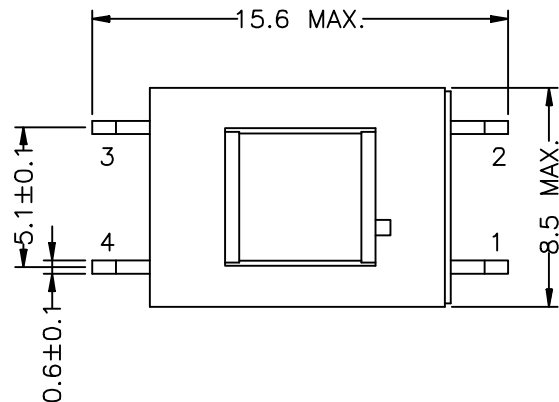


REACH & RoHS
COMPLIANT



ELECTRICAL CHARACTERISTICS :

1.DCR : PIN 1-2 = 118Ω MAX.
PIN 3-4 = 140Ω MAX.

2.INDUCTANCE (200Hz, 1.0Vrms)
PIN 1-2 = 4-3 = 2H MIN.

3.IMPEANCE (1KHz, 1.0Vrms, LOAD 400Ω) 1-2 = 600Ω ±10%

4.INSERTION LOSS (200Hz-4KHz) 3.85dB MAX.

5.RETURN LOSS (200Hz-4KHz) 35dB TYP.

6.TURN RATIO : (15KHz, 1Vrms) 1-2 : 4-3 = 1 : 1 ±2%

7.HI-POT (1500VAC, 1mA, 2SEC) PRI-SEC

8.RoHS COMPLIANTE

VOOHU 苏州沃虎电子科技有限公司
Su Zhou Voohu Electronic Tech.Co.Ltd

TEL: +86 400 1048 018

WEB: WWW.WOHU-TEK.COM

TITLE:
Audio Transformer

PART NO.:
WHTT4102

REMARK:

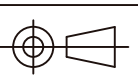
SIZE
A4

SACLE
1:1

SHEET
1/1

UNITS
MM[INCH]

REV
A0



GENERAL TOLERANCES
UNLESS SPECIFIED

x±0.35
.x±0.30
.xx±0.25
.xxx±0.10

x°±3.0°
.x°±2.0°
.xx°±1.5°
.xxx°±1.0°

APPROVED BY:
Geoffrey.Song

CHECKED BY:
Elvis.Song

DESIGND BY:
Sunny.Xu