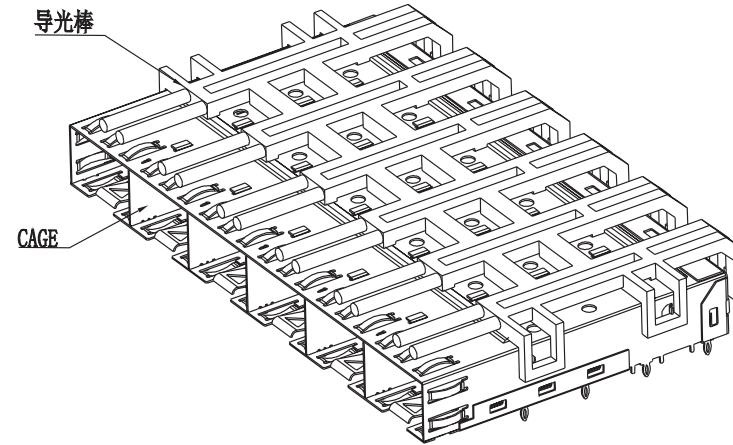
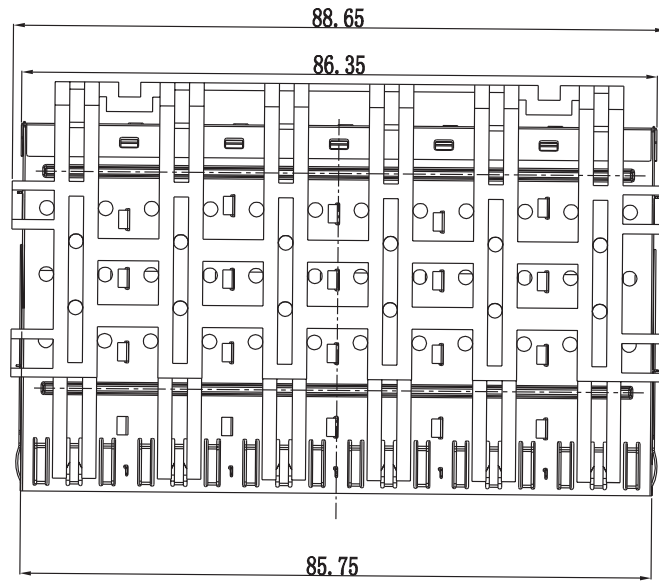
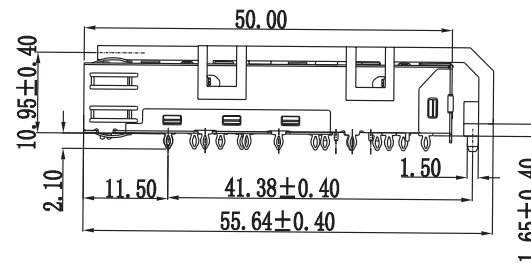
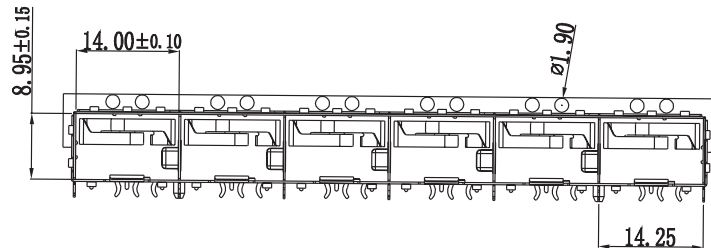


CUSTOMER DRAWING



3D View



NOTE:

1, DESCRIPTION	MATERIAL	PLATING
01 SFP CAGE	COPPER ALLOY T=0.25	N/A
02 LIGHTPIPE	POLYCARBONATE. UL 94V-0	N/A
2, TEMPERATURE:	COLOR: CLEAR	
OPERATION:	-40° C~+85° C	
STORAGE:	-55° C~+105° C	

RoHS Compliant

VOOHU 苏州沃虎电子科技有限公司
Su Zhou Voohu Electronic Tech.Co.Ltd

TITLE:
SFP 1*6 WITH LIGHT PIPE

SIZE
A4

UNITS
MM[INCH]

GENERAL TOLERANCES
UNLESS SPECIFIED

APPROVED BY:
Geoffrey.Song

PART NO.:
WHSFP01516W002

SACLE
1:1

REV
A0

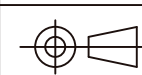
x±0.35
.x±0.30

x°±3.0°
.x°±2.0°

CHECKED BY:
Elvis.Song

REMARK:

SHEET
1/2



.xx±0.25
.xxx±0.10

.xx°±1.5°
.xxx°±1.0°

DESIGND BY:
Sunny.Xu

TEL: +86 400 1048 018

WEB: WWW.WOHU-TEK.COM

Н

G

F

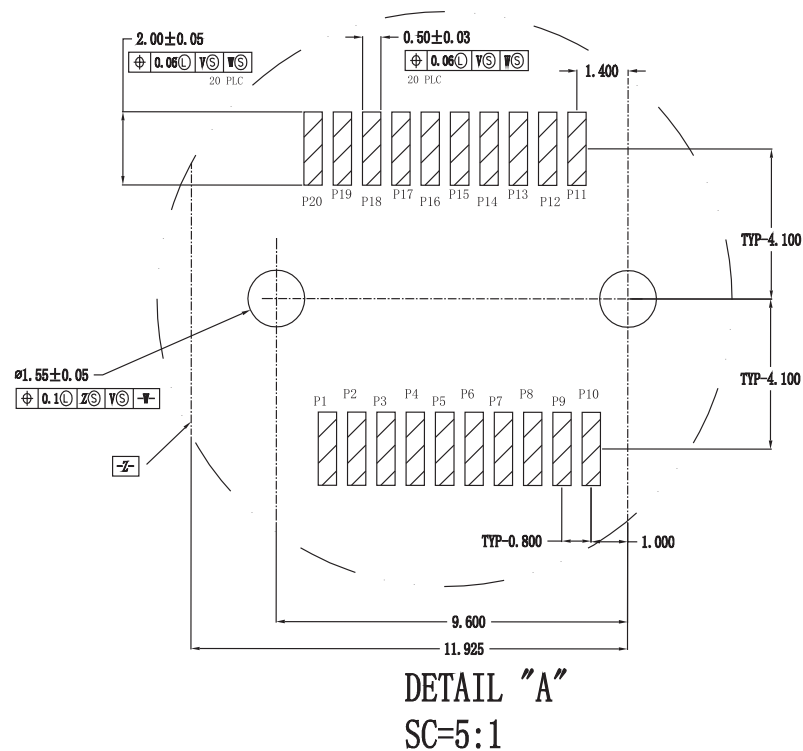
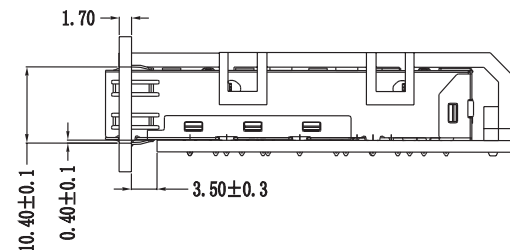
E

D

C

B

A



SC=5:1

The diagram shows the orthographic projection of a cone. On the left is the top view, represented by two concentric circles with a horizontal and vertical centerline. To the right of the top view is the front view, represented by a trapezoid with a vertical centerline. The horizontal centerline of the top view aligns with the base of the trapezoid in the front view.