

SC02

NOTE:

MATERIAL:

1. CONTACT: PHOSPHOR BRONZE.
2. CONNECTOR HOUSING: LCP UL 94V-0. COLOR: BLACK.
3. MOULDED INSERT: HIGH TEMPERATURE PLASTIC UL 94V-0. COLOR:BLACK.
4. CAGE: COPPER ALLOY.
5. LIGHT PIPES: POLYCARBONATE. UL 94V-0. COLOR:CLEAR
6. LIGHT PIPE HOUSING: PBT UL 94V-0 COLOR:BLACK.

PLATED:

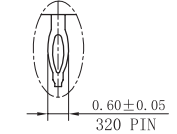
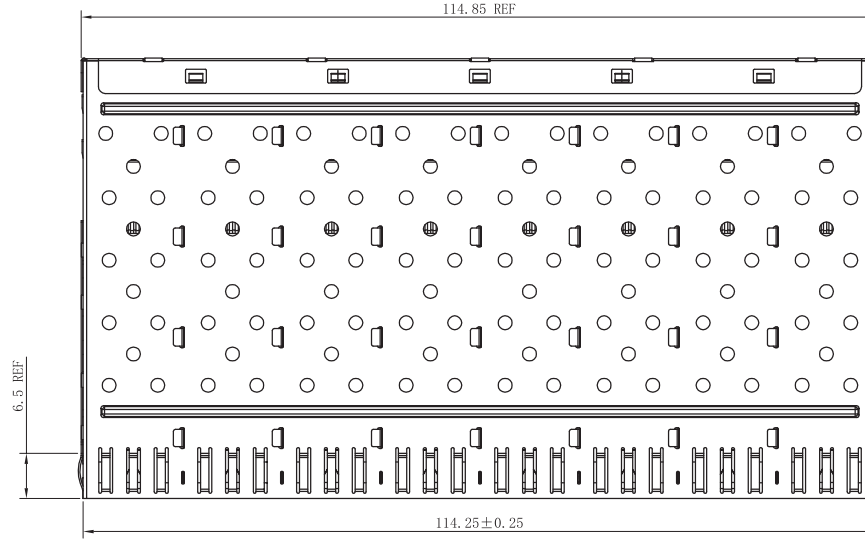
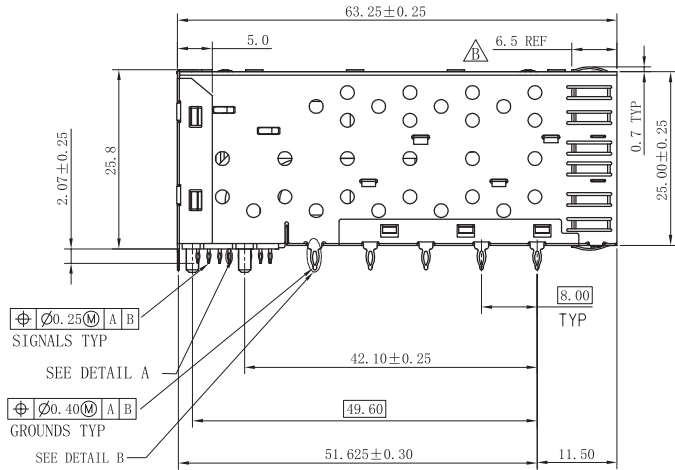
1. CONTACT MATING AREA : PLATING GOLD OVER 1.27 MICROMETERS MINIMUM NICKEL.
2. CONTACT NEEDLE EYE: 2.54 MICROMETERS MINIMUM MATTE TIN OVER 1.27 MICROMETERS MINIMUM NICKEL.

MECHANICAL REQUIREMENT:

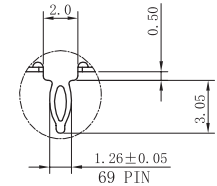
1. DURABILITY: 100 CYCLES MIN.
2. INSERTION AND EXTRACTION FORCE: 40N MAX & 11.5N MAX

ENVIRONMENTAL:

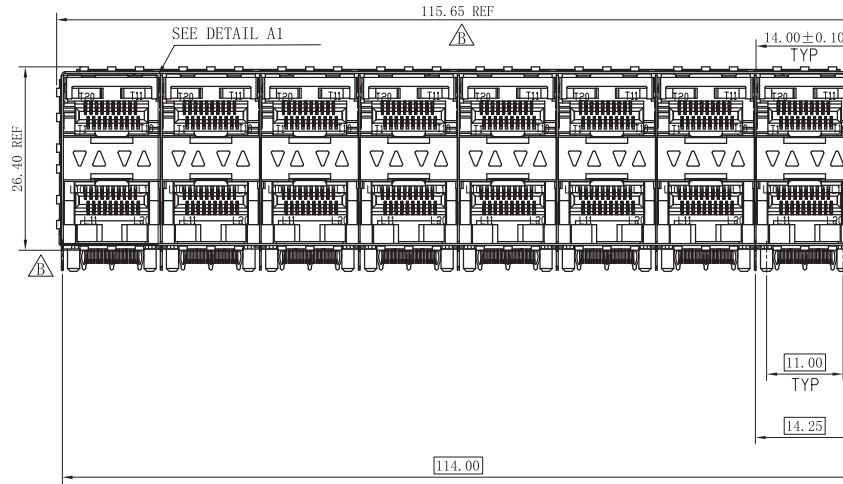
1. LOW LEVEL CONTACT RESISTANCE (LLCR):
 ΔR 10 MILLIOHMS MAXIMUM FOR SHIELD AND SIGNAL CONTACTS.
2. DIELECTRIC WITHSTANDING VOLTAGE: 300V AC/MAX.
3. INSULATION RESISTANCE: 1×10^9 OHMS MINIMUM.
4. RATINGS CURRENT: 0.5 AMPS MAX.
5. RATINGS VOLTAGE: 30 VOLTS DC/AC(RMS) MAX.
6. OPERATION: $-40^{\circ} \text{C}^{\circ} +85^{\circ} \text{C}$.
7. STORAGE: $-55^{\circ} \text{C}^{\circ} +105^{\circ} \text{C}$.
8. ROHS COMPLIANT



DETAIL A
SCALE 10:1



DETAIL B
SCALE 5:1



RoHS Compliant



苏州沃虎电子科技有限公司
Su Zhou Voohu Electronic Tech.Co.Ltd

TITLE:
SFP 2X8 CONNECTOR

PART NO.:
WHSFP06228F014

REMARK:
gold plated 30u" Ni 30u" MIN

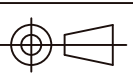
SIZE
A4

SACLE
1:1

SHEET
1/4

UNITS
MM[INCH]

REV
A0



GENERAL TOLERANCES
UNLESS SPECIFIED

$x \pm 0.35$	$x^{\circ} \pm 3.0^{\circ}$
$.x \pm 0.30$	$.x^{\circ} \pm 2.0^{\circ}$
$.xx \pm 0.25$	$.xx^{\circ} \pm 1.5^{\circ}$
$.xxx \pm 0.10$	$.xxx^{\circ} \pm 1.0^{\circ}$

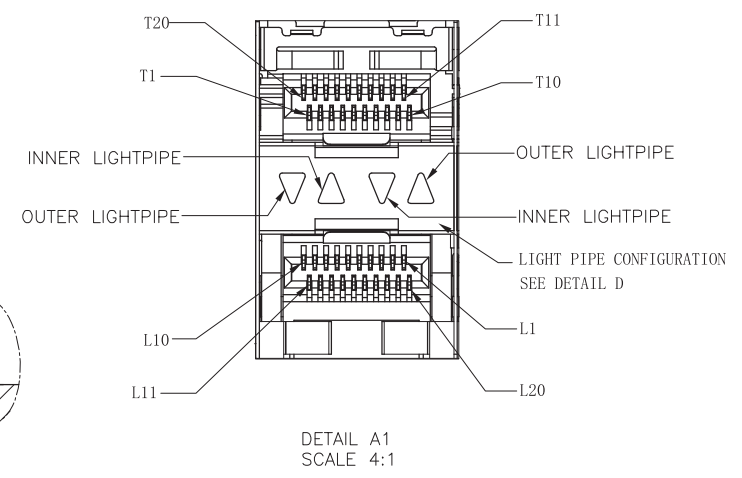
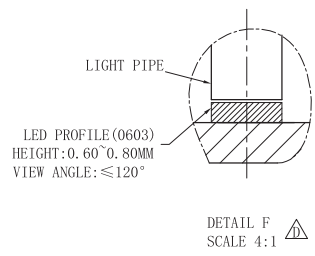
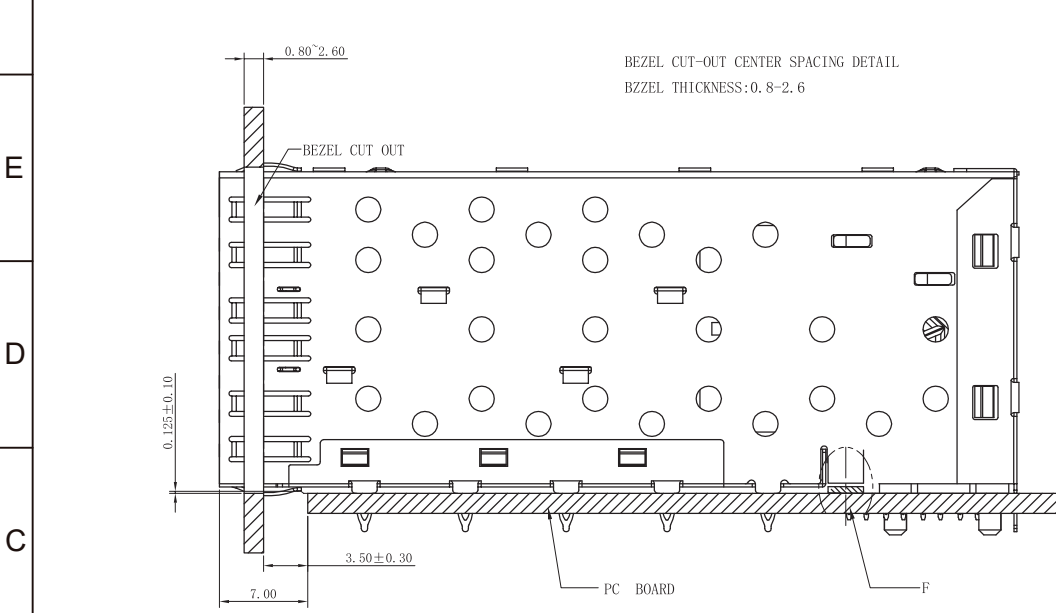
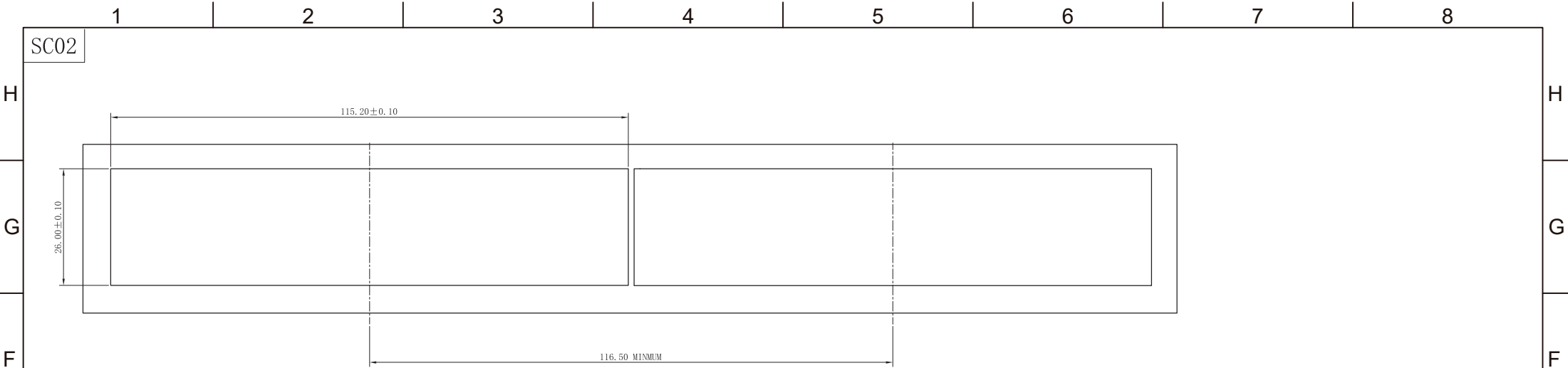
APPROVED BY:
Geoffrey.Song

CHECKED BY:
Elvis.Song


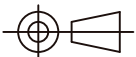
DESIGND BY:
Sunny.Xu

TEL: +86 400 1048 018

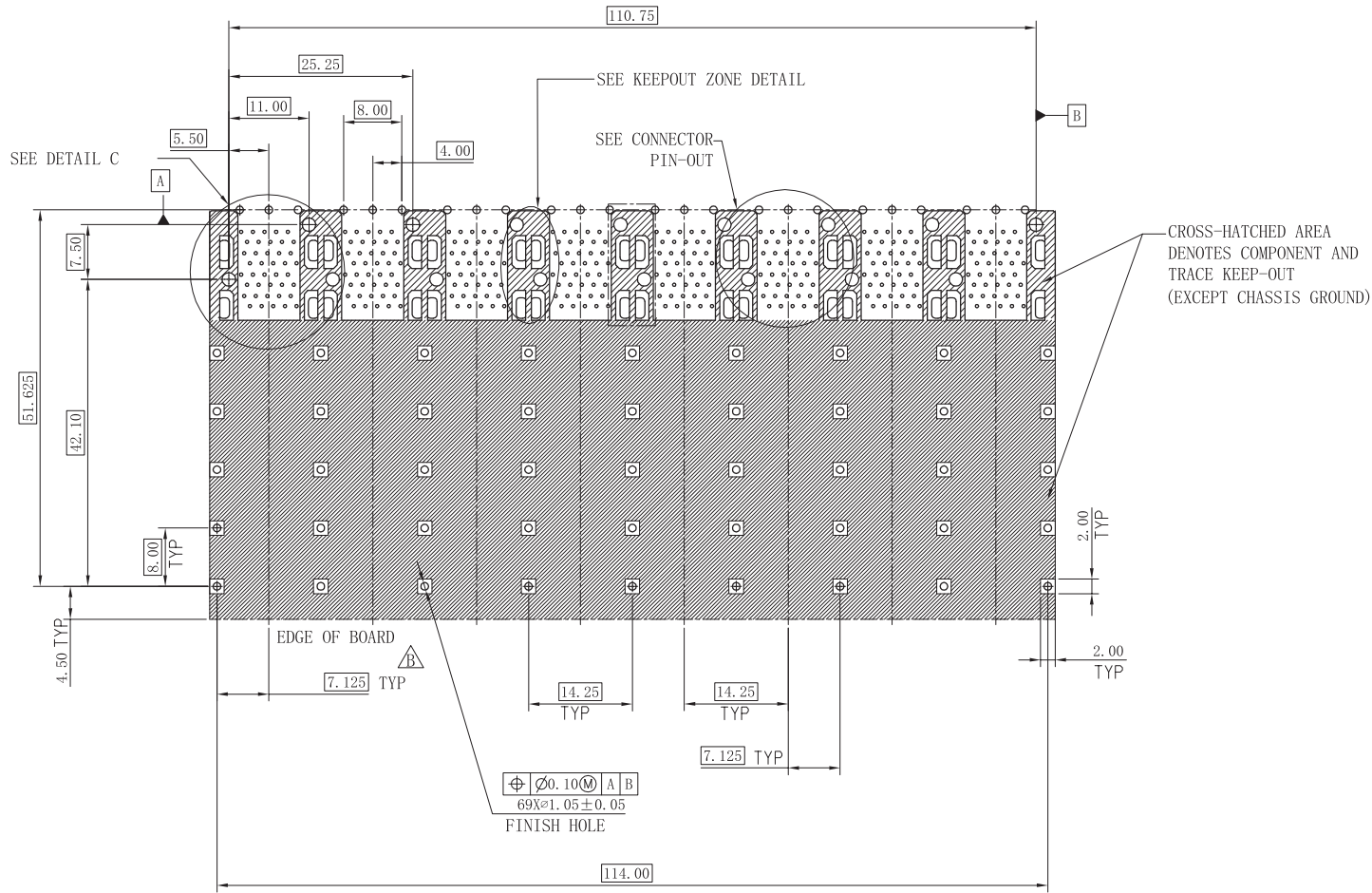
WEB: WWW.WOHU-TEK.COM



RoHS Compliant

A	 苏州沃虎电子科技有限公司 Su Zhou Voohu Electronic Tech.Co.Ltd		TITLE: SFP 2X8 CONNECTOR	SIZE A4	UNITS MM[INCH]	GENERAL TOLERANCES UNLESS SPECIFIED		APPROVED BY: Geoffrey.Song
			PART NO.: WHSFP06228F014	SACLE 1:1	REV A0	x±0.35 .x±0.30	x°±3.0° .x°±2.0°	CHECKED BY: Elvis.Song
	TEL: +86 400 1048 018	WEB: WWW.WOHU-TEK.COM	REMARK: gold plated 30u" Ni 30u" MIN	SHEET 2/4		.xx±0.25 .xxx±0.10	.xx°±1.5° .xxx°±1.0°	DESIGND BY: Sunny.Xu

SC02



RECOMMENDED PCB LAYOUT-COMPONENT SIDE
RECOMMENDED PCB THICKNESS-2.63MM

THE ENTIRE AREA OF THE CONNECTOR FOOTPRINT
TO BE CONSIDERED THE KEEP OUT AREA FOR COMPONENTS
(OTHER THAN LIGHT PIPE LED'S)
THIS AREA IS INDICATED BY THE DASHED LINE

RoHS Compliant

VOOHU 苏州沃虎电子科技有限公司
Su Zhou Voohu Electronic Tech.Co.Ltd

TITLE:
SFP 2X8 CONNECTOR

PART NO.:
WHSFP06228F014

REMARK:
gold plated 30u" Ni 30u" MIN

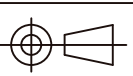
SIZE
A4

SACLE
1:1

SHEET
3/4

UNITS
MM[INCH]

REV
A0



GENERAL TOLERANCES
UNLESS SPECIFIED

$x \pm 0.35$
 $.x \pm 0.30$
 $.xx \pm 0.25$
 $.xxx \pm 0.10$

$x^\circ \pm 3.0^\circ$
 $.x^\circ \pm 2.0^\circ$
 $.xx^\circ \pm 1.5^\circ$
 $.xxx^\circ \pm 1.0^\circ$

APPROVED BY:
Geoffrey.Song

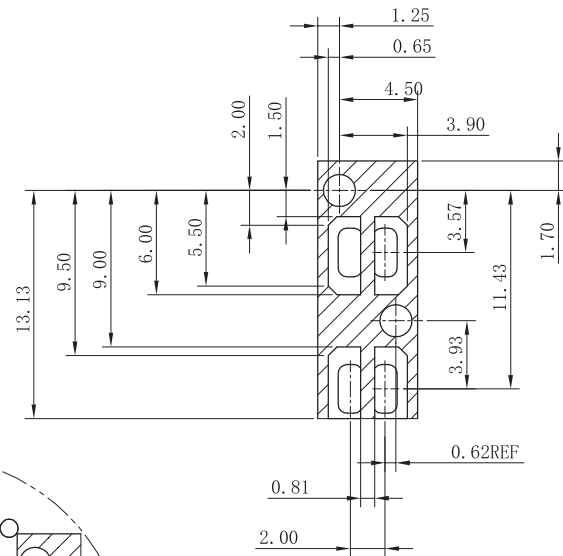
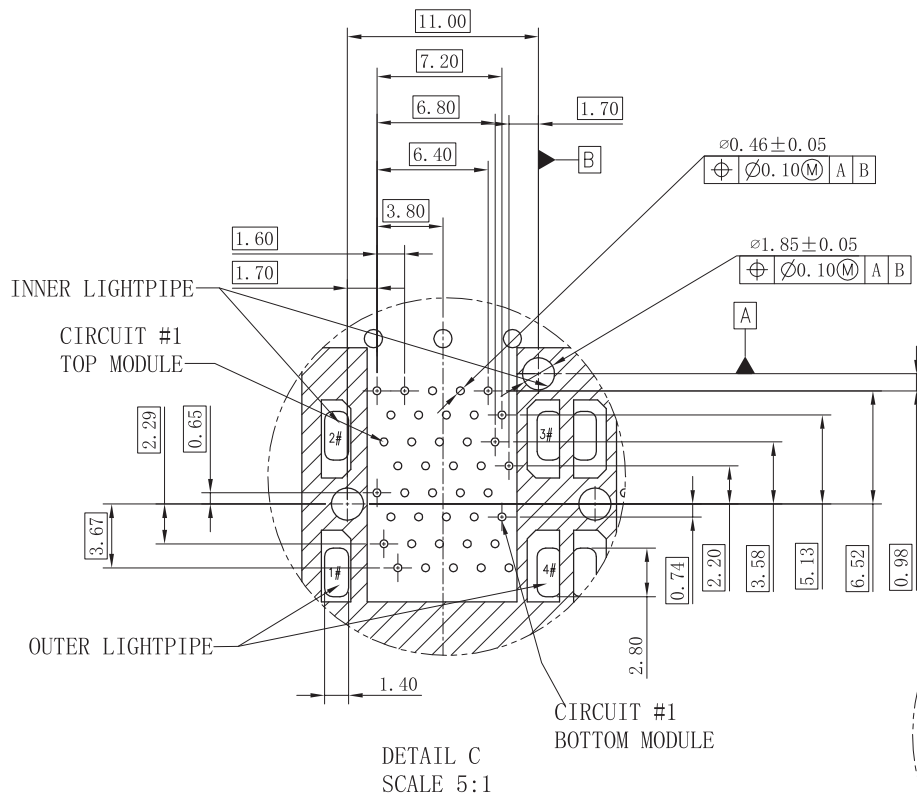
CHECKED BY:
Elvis.Song

DESIGND BY:
Sunny.Xu

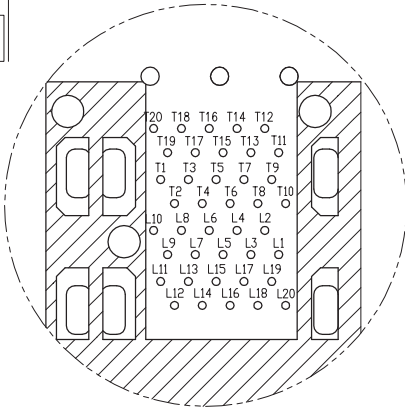
TEL: +86 400 1048 018

WEB: WWW.WOHU-TEK.COM

SC02



KEEPOUT ZONE
DETAIL SCALE 5:1



CONNECTOR PIN-OUT
COMPONENT SIDE OF BOARD

RoHS Compliant

VOOHU 苏州沃虎电子科技有限公司
Su Zhou Voohu Electronic Tech.Co.Ltd

TITLE:
SFP 2X8 CONNECTOR

SIZE
A4

UNITS
MM[INCH]

GENERAL TOLERANCES
UNLESS SPECIFIED

APPROVED BY:
Geoffrey.Song

PART NO.:
WHSFP06228F014

SACLE
1:1

REV
A0

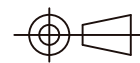
$x \pm 0.35$
 $.x \pm 0.30$

$x^\circ \pm 3.0^\circ$
 $.x^\circ \pm 2.0^\circ$

CHECKED BY:
Elvis.Song

REMARK:
gold plated 30u" Ni 30u" MIN

SHEET
4/4



$.xx \pm 0.25$
 $.xxx \pm 0.10$

$.xx^\circ \pm 1.5^\circ$
 $.xxx^\circ \pm 1.0^\circ$

DESIGND BY:
Sunny.Xu

TEL: +86 400 1048 018

WEB: WWW.WOHU-TEK.COM