

S+C02

NOTE:

MATERIAL:

1. CONTACT: PHOSPHOR BRONZE.
2. CONNECTOR HOUSING: LCP UL 94V-0. COLOR: BLACK.
3. MOULDED INSERT: HIGH TEMPERATURE PLASTIC UL 94V-0. COLOR:BLACK.
4. CAGE: COPPER ALLOY.
5. LIGHT PIPES: POLYCARBONATE. UL 94V-0. COLOR:CLEAR
6. LIGHT PIPE HOUSING: PBT UL 94V-0 COLOR:BLACK.
7. EMI SPRING: COPPER ALLOY.

PLATED:

1. CONTACT MATING AREA : PLATING GOLD OVER 1.27 MICROMETERS MINIMUM NICKEL.
2. CONTACT NEEDLE EYE: 0.5 MICROMETERS MINIMUM MATTE TIN OVER 1.27 MICROMETERS MINIMUM NICKEL.

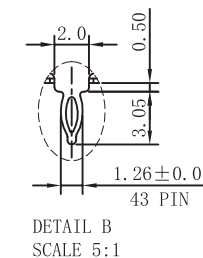
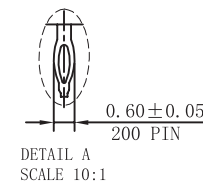
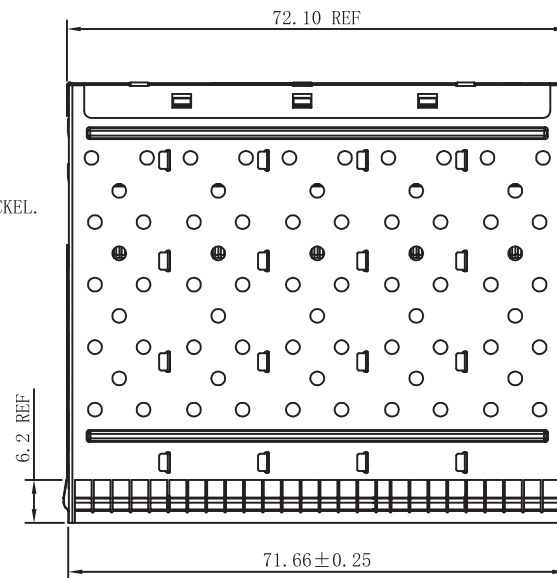
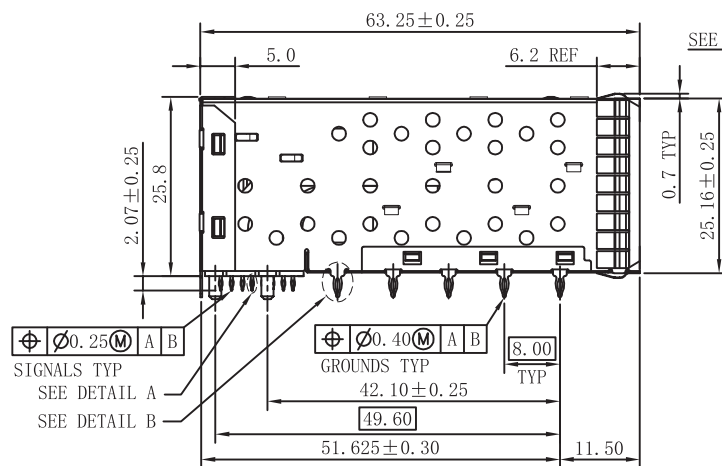
MECHANICAL REQUIREMENT:

1. DURABILITY: 100 CYCLES MIN.
2. INSERTION AND EXTRACTION FORCE: 40N MAX & 12.5N MAX.

ENVIRONMENTAL:

1. LOW LEVEL CONTACT RESISTANCE(LLCR):  
 $\Delta R$  10 MILLIOHMS MAXIMUM FOR SHIELD AND SIGNAL CONTACTS.
2. DIELECTRIC WITHSTANDING VOLTAGE: 300V AC/MAX.
3. INSULATION RESISTANCE:  $1 \times 10^9$ / OHMS MINIMUM.
4. RATINGS CURRENT: 0.5 AMPS MAX.
5. RATINGS VOLTAGE: 30 VOLTS DC/AC(RMS) MAX.
6. OPERATION:  $-40^{\circ} \text{C} \sim +85^{\circ} \text{C}$ .
7. STORAGE:  $-55^{\circ} \text{C} \sim +105^{\circ} \text{C}$ .
8. ROHS COMPLIANT

\* FOR FOCUS SIZE.



RoHS Compliant

TITLE:

SFP+ 2X5 CONNECTOR

SIZE  
A4UNITS  
MM[INCH]GENERAL TOLERANCES  
UNLESS SPECIFIED

APPROVED BY:

Geoffrey.Song

PART NO.:

WHSFP15725F005

SCALE  
1:1REV  
A0 $x \pm 0.35$   
 $.x \pm 0.30$  $x^{\circ} \pm 3.0^{\circ}$   
 $.x^{\circ} \pm 2.0^{\circ}$ 

CHECKED BY:

Elvis.Song

REMARK:

gold plated 30u"

SHEET  
1/4 $.xx \pm 0.25$   
 $.xxx \pm 0.10$  $.xx^{\circ} \pm 1.5^{\circ}$   
 $.xxx^{\circ} \pm 1.0^{\circ}$ 

DESIGND BY:

Sunny.Xu

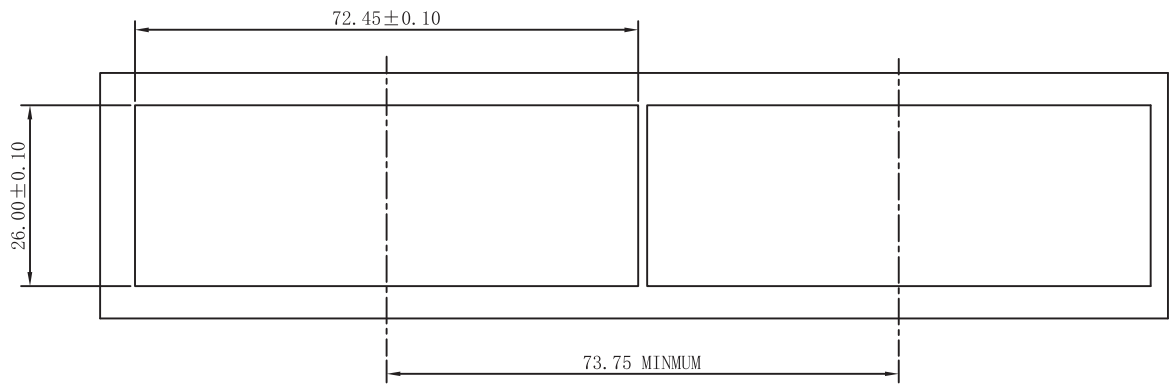
苏州沃虎电子科技有限公司  
Su Zhou Voohu Electronic Tech.Co.Ltd

TEL: +86 400 1048 018

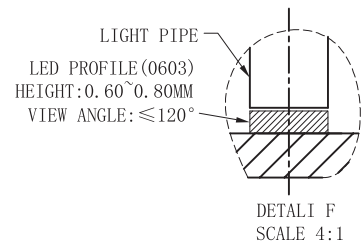
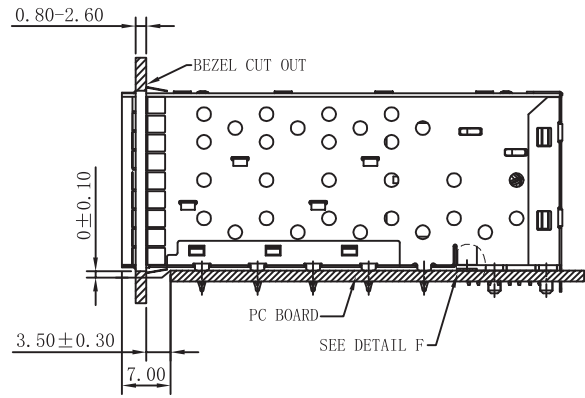
WEB: WWW.WOHU-TEK.COM

S+C02

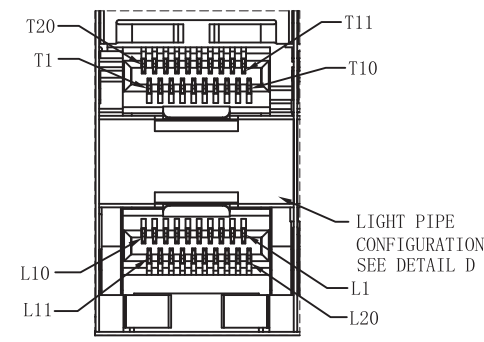
REV. 版本	ECN NO. 变更说明	DATE 日期
------------	-----------------	------------



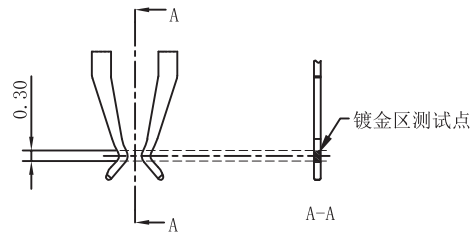
BEZEL CUT-OUT CENTER SPACING DETAIL  
BEZEL THICKNESS:0.8-2.6



DETAIL F  
SCALE 4:1



DETAIL A1  
SCALE 4:1



SCALE 5:1

RoHS Compliant

**VOOHU** 苏州沃虎电子科技有限公司  
Su Zhou Voohu Electronic Tech.Co.Ltd

TEL: +86 400 1048 018

WEB: [WWW.WOHU-TEK.COM](http://WWW.WOHU-TEK.COM)

TITLE:  
SFP+ 2x1 Press Fit Connector

PART NO.:  
WHSFP15725F005

REMARK:  
gold plated 30u"

SIZE  
A4

SACLE  
1:1

SHEET  
2/4

UNITS  
MM[INCH]

REV  
A0

GENERAL TOLERANCES  
UNLESS SPECIFIED

x±0.35	x°±3.0°
.x±0.30	.x°±2.0°
.xx±0.25	.xx°±1.5°
.xxx±0.10	.xxx°±1.0°

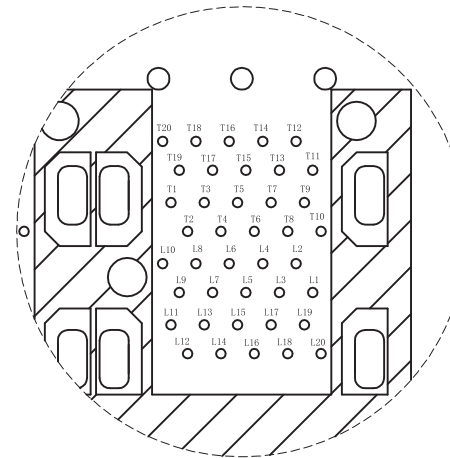
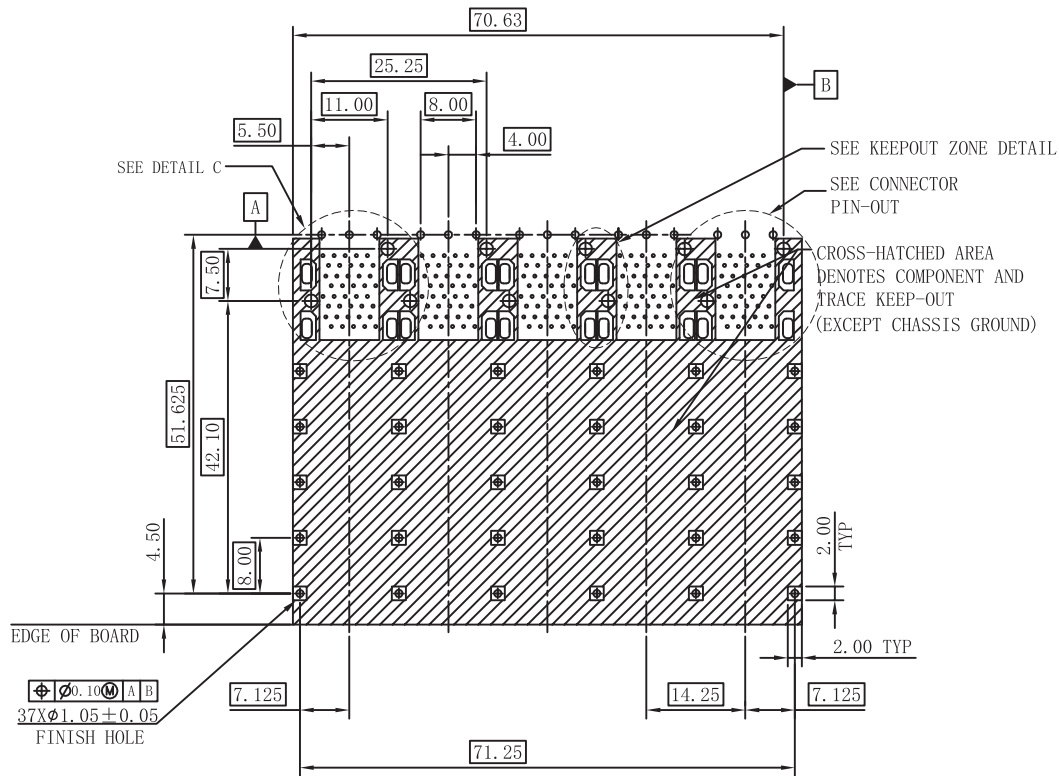
APPROVED BY:  
Geoffrey.Song

CHECKED BY:  
Elvis.Song

DESIGND BY:  
Sunny.Xu

S+C02


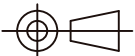
REV. 版本	ECN NO. 变更说明	DATE 日期



CONNECTOR PIN-OUT  
COMPONENT SIDE OF BOARD

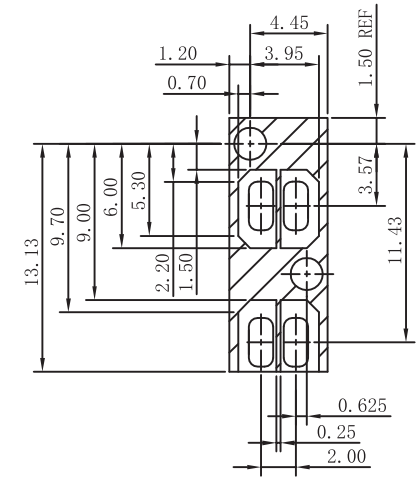
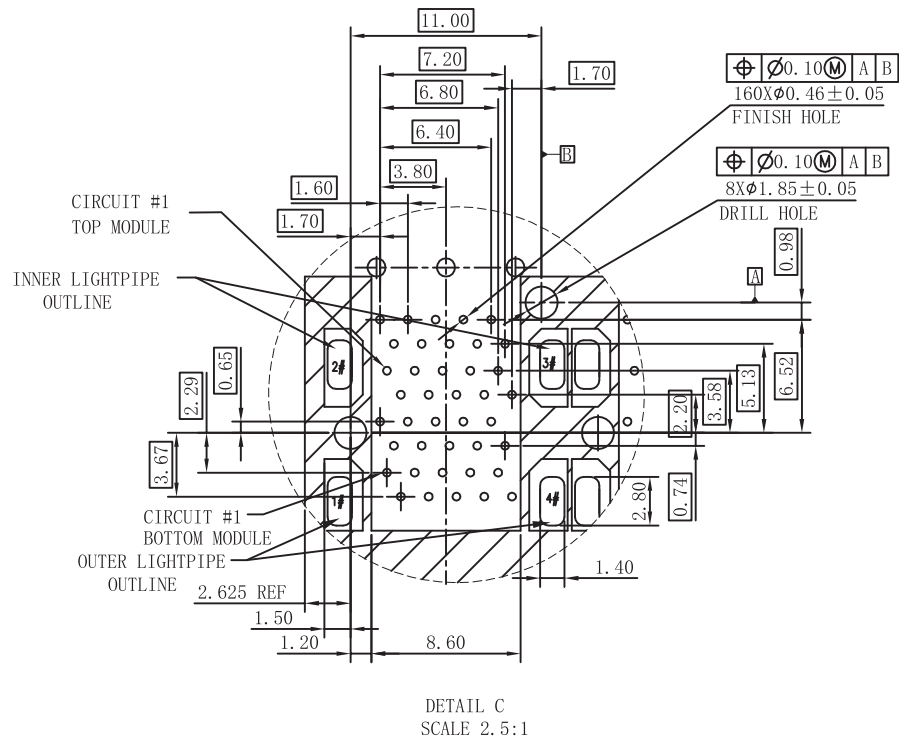
RECOMMENDED PCB LAYOUT-COMPONENT SIDE  
RECOMMENDED PCB THICKNESS-2.63 MM  
  
THE ENTIRE AREA OF THE CONNECTOR FOOTPRINT  
TO BE CONSIDERED THE KEEPOUT AREA FOR COMPONENTS  
(OTHER THAN LIGHT PIPE LED'S)  
THIS AREA IS INDICATED BY THE DASHED LINE

RoHS Compliant

 <b>苏州沃虎电子科技有限公司</b> Su Zhou Voohu Electronic Tech.Co.Ltd	TEL: +86 400 1048 018	WEB: <a href="http://WWW.WOHU-TEK.COM">WWW.WOHU-TEK.COM</a>	TITLE: SFP+ 2x1 Press Fit Connector	SIZE A4	UNITS MM[INCH]	GENERAL TOLERANCES UNLESS SPECIFIED		APPROVED BY: Geoffrey.Song
			PART NO.: WHSFP15725F005	SACLE 1:1	REV A0	.xx±0.35	x°±3.0°	CHECKED BY:
			REMARK: gold plated 30u"	SHEET 3/4		.x±0.30	x°±2.0°	Elvis.Song
						.xxx±0.10	.xxx°±1.0°	DESIGND BY: Sunny.Xu

S+C02

REV. 版本	ECN NO. 变更说明	DATE 日期
------------	-----------------	------------



KEEPOUT ZONE  
DETAIL SCALE 2.5:1

RoHS Compliant

**VOOHU** 苏州沃虎电子科技有限公司  
Su Zhou Voohu Electronic Tech.Co.Ltd

TITLE:  
SFP+ 2x1 Press Fit Connector

PART NO.:  
WHSFP15725F005

REMARK:  
gold plated 30u"

SIZE  
A4

SACLE  
1:1

SHEET  
4/4

UNITS  
MM[INCH]

REV  
A0

GENERAL TOLERANCES  
UNLESS SPECIFIED

x±0.35	x°±3.0°
.x±0.30	.x°±2.0°
.xx±0.25	.xx°±1.5°
.xxx±0.10	.xxx°±1.0°

APPROVED BY:  
Geoffrey.Song

CHECKED BY:  
Elvis.Song

DESIGND BY:  
Sunny.Xu

TEL: +86 400 1048 018

WEB: [WWW.WOHU-TEK.COM](http://WWW.WOHU-TEK.COM)