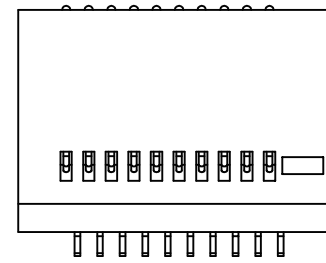
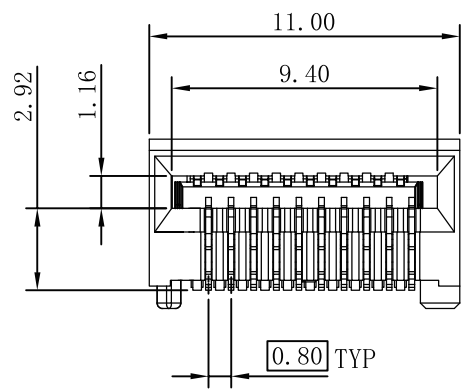
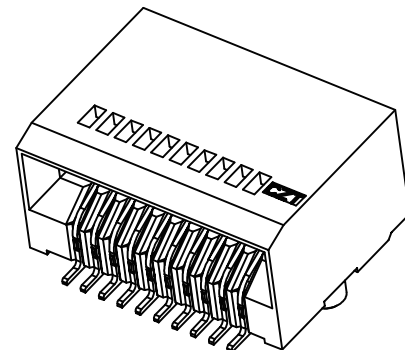
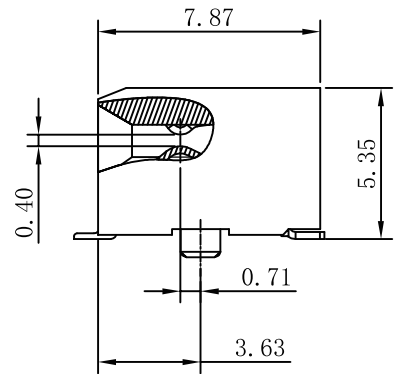
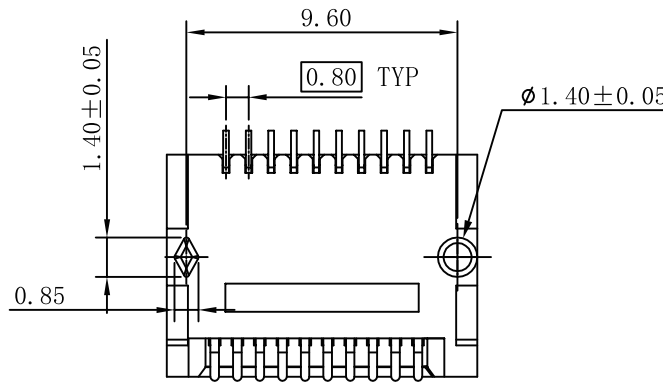


REACH & RoHS  
COMPLIANT



NOTE:  
MATERIAL:  
1. CONTACT: COPPER ALLOY.  
2. HOUSING: HIGH TEMPERATURE  
THERMOPLASTIC GLASS FILLED UL 94V-0.  
BLACK.  
CONTACT FINISH:  
1. MATING AREA : PLATING GOLD  
15u" OR 30u" MIN OVER 50u" MIN  
NICKEL.  
2. SOLDER TAILS: PLATING TIN  
100u" MIN OVER 50u" MIN NICKEL.  
ENVIRONMENTAL:  
1. OPERATION: -40℃~+105℃.  
2. STORAGE: -55℃~+105℃.



**VOOHU** 苏州沃虎电子科技有限公司  
Su Zhou Voohu Electronic Tech.Co.Ltd

TITLE:  
SFP28 1×1 CONNECTOR

SIZE  
A4

UNITS  
MM[INCH]

GENERAL TOLERANCES  
UNLESS SPECIFIED

APPROVED BY:  
Geoffrey.Song

PART NO.:  
WHSFP30111F002

SACLE  
1:1

REV  
A0

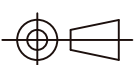
.x±0.35  
.x±0.30

x°±3.0°  
.x°±2.0°

CHECKED BY:  
Elvis.Song

REMARK:

SHEET  
1/2



.xx±0.25  
.xxx±0.10

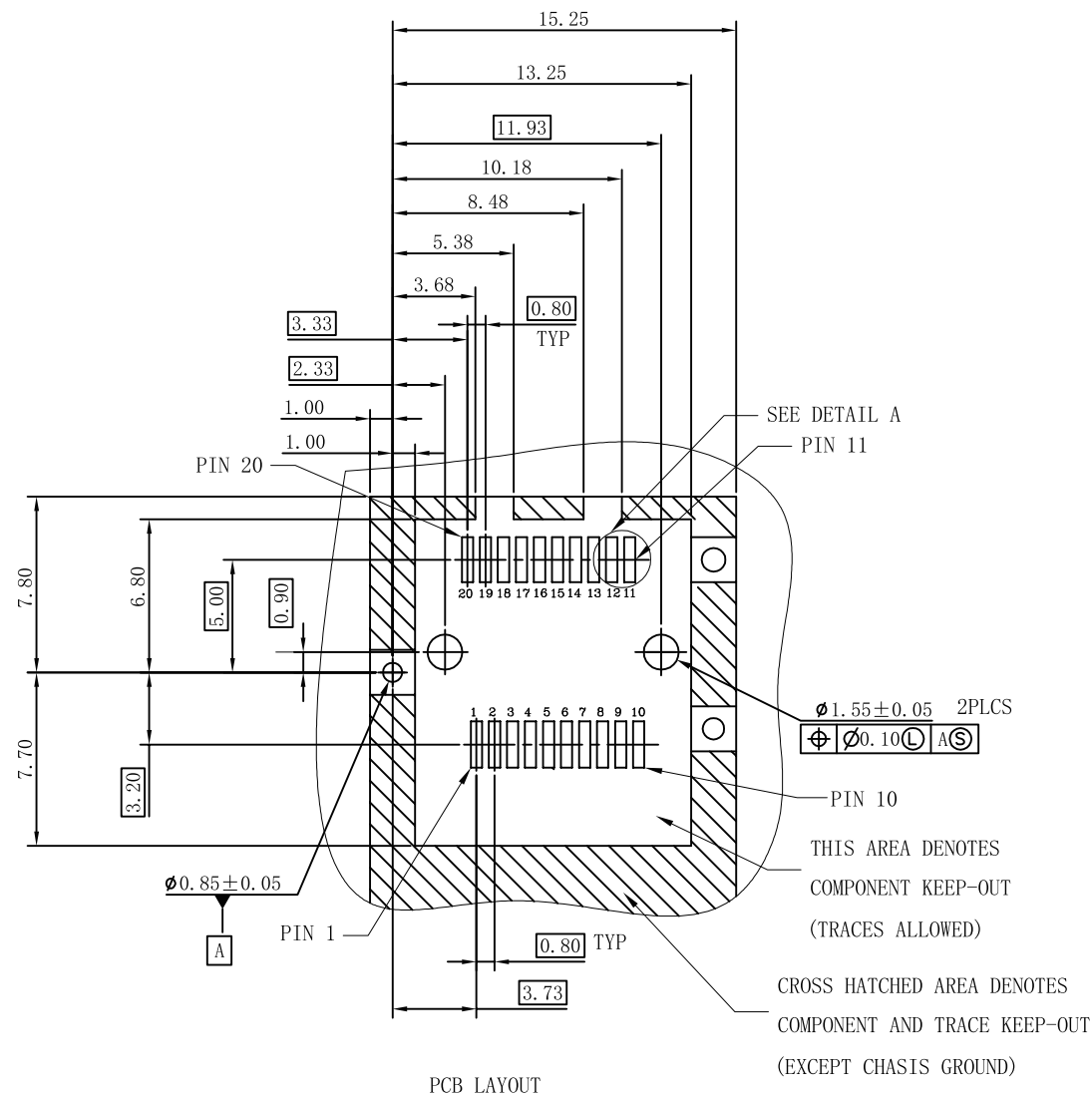
.xx°±1.5°  
.xxx°±1.0°

DESIGND BY:  
Sunny.Xu

TEL: +86 400 1048 018

WEB: [WWW.WOHU-TEK.COM](http://WWW.WOHU-TEK.COM)

REACH & RoHS  
COMPLIANT



**VOOHU** 苏州沃虎电子科技有限公司  
Su Zhou Voohu Electronic Tech.Co.Ltd

TEL: +86 400 1048 018

WEB: [WWW.WOHU-TEK.COM](http://WWW.WOHU-TEK.COM)

TITLE:  
SFP28 1×1 CONNECTOR

PART NO.:  
WHSFP30111F002

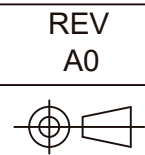
REMARK:

SIZE  
A4

UNITS  
MM[INCH]

SACLE  
1:1

SHEET  
2/2



GENERAL TOLERANCES  
UNLESS SPECIFIED

|           |            |
|-----------|------------|
| x±0.35    | x°±3.0°    |
| .x±0.30   | .x°±2.0°   |
| .xx±0.25  | .xx°±1.5°  |
| .xxx±0.10 | .xxx°±1.0° |

APPROVED BY:  
Geoffrey.Song

CHECKED BY:  
Elvis.Song

DESIGND BY:  
Sunny.Xu