

S+C02

NOTE:

MATERIAL:

1. CONTACT: PHOSPHOR BRONZE.
2. CONNECTOR HOUSING: LCP UL 94V-0. COLOR: BLACK.
3. MOULDED INSERT: HIGH TEMPERATURE PLASTIC UL 94V-0. COLOR:BLACK.
4. CAGE: COPPER ALLOY.
5. EMI SPRING: COPPER ALLOY.

PLATED:

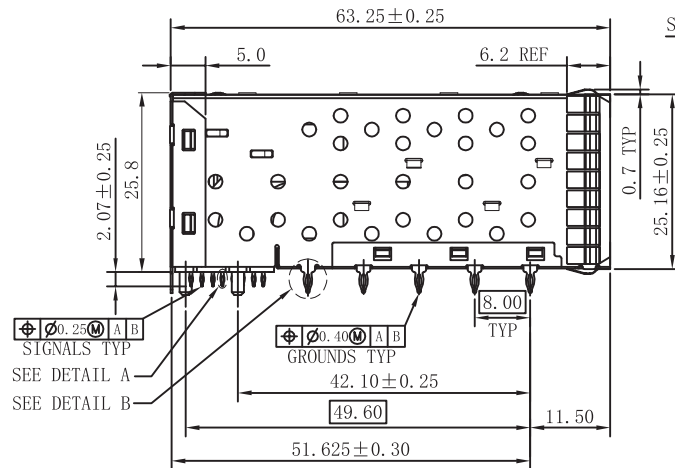
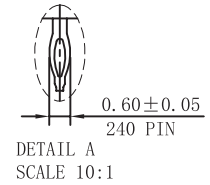
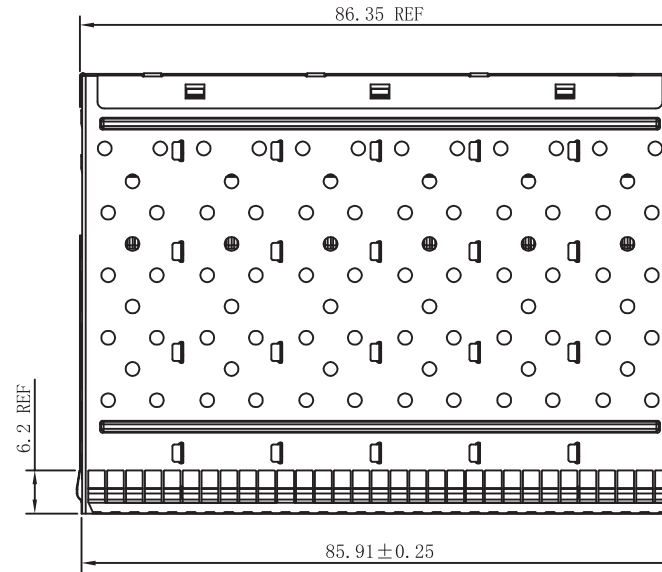
1. CONTACT MATING AREA : PLATING 0.76 MICROMETERS MINIMUM GOLD OVER 1.27 MICROMETERS MINIMUM NICKEL.
2. CONTACT NEEDLE EYE: 0.5 MICROMETERS MINIMUM MATTE TIN OVER 1.27 MICROMETERS MINIMUM NICKEL.

MECHANICAL REQUIREMENT:

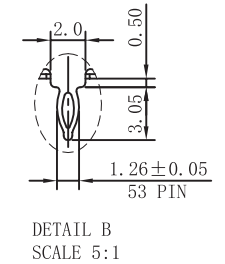
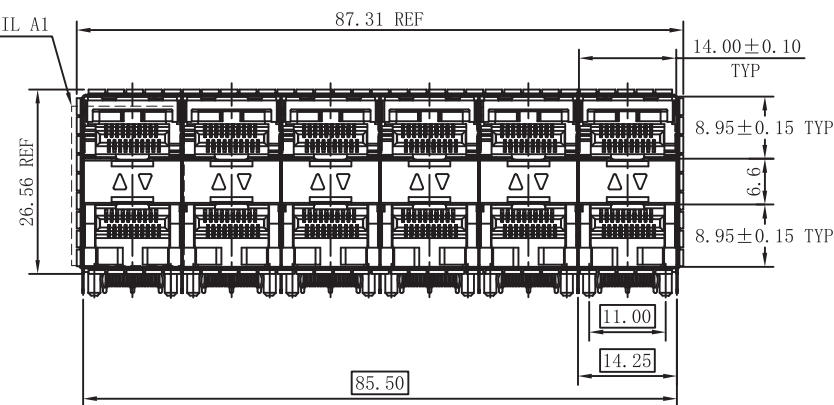
1. DURABILITY: 100 CYCLES MIN.
2. INSERTION AND EXTRACTION FORCE: 40N MAX & 12.5N MAX

ENVIRONMENTAL:

1. LOW LEVEL CONTACT RESITANCE(LLCR):  
 $\Delta R$  10 MILLIOHMS MAXIMUM FOR SHIELD AND SIGNAL CONTACTS.
2. DIELECTRIC WITHSTANDING VOLTAGE: 300V AC/MAX.
3. INSULATION RESISTANCE:  $1 \times 10^9$ / OHMS MINIMUM.
4. RATINGS CURRENT: 0.5 AMPS MAX.
5. RATINGS VOLTAGE: 30 VOLTS DC/AC(RMS) MAX.
6. OPERATION:  $-40^{\circ} \text{C} \sim +85^{\circ} \text{C}$ .
7. STORAGE:  $-55^{\circ} \text{C} \sim +105^{\circ} \text{C}$ .
8. ROHS COMPLIANT



SEE DETAIL A1



RoHS Compliant

TITLE:

SFP+ 2X6 Press Fit Connector

SIZE

A4

UNITS

MM[INCH]

GENERAL TOLERANCES

UNLESS SPECIFIED

APPROVED BY:

Geoffrey.Song

PART NO.:

WHSFP16026F108

SACLE

1:1

REV

A0

 $x \pm 0.35$  $x \pm 0.30$  $.xx \pm 0.25$  $.xxx \pm 0.10$  $x^{\circ} \pm 3.0^{\circ}$  $.x^{\circ} \pm 2.0^{\circ}$  $.xx^{\circ} \pm 1.5^{\circ}$  $.xxx^{\circ} \pm 1.0^{\circ}$ 

CHECKED BY:

Elvis.Song

DESIGND BY:

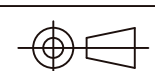
Sunny.Xu

REMARK:

gold plated 30u" Ni 30u" Min

SHEET

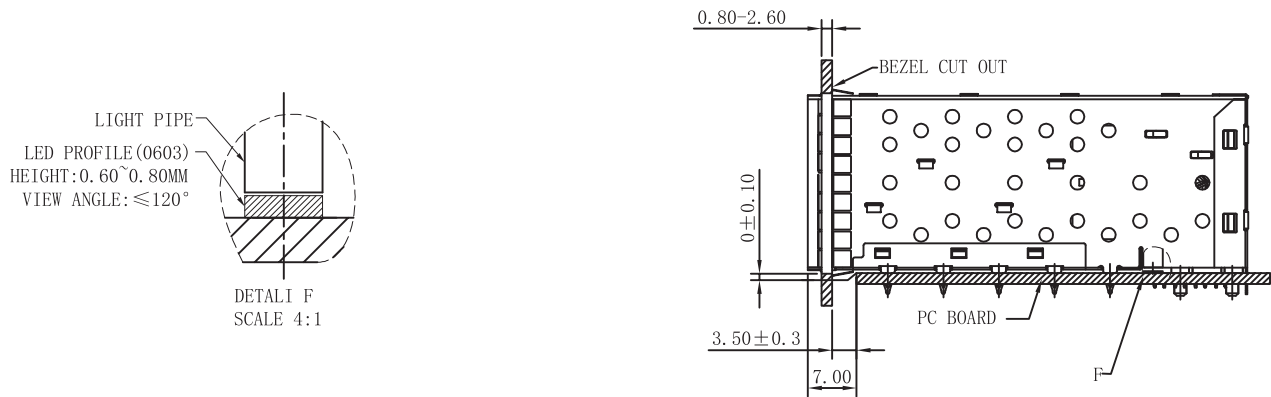
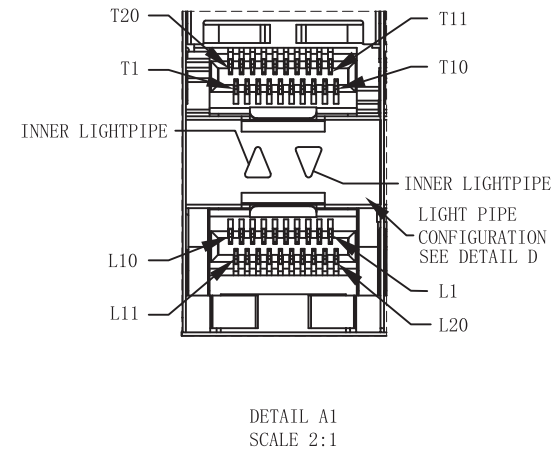
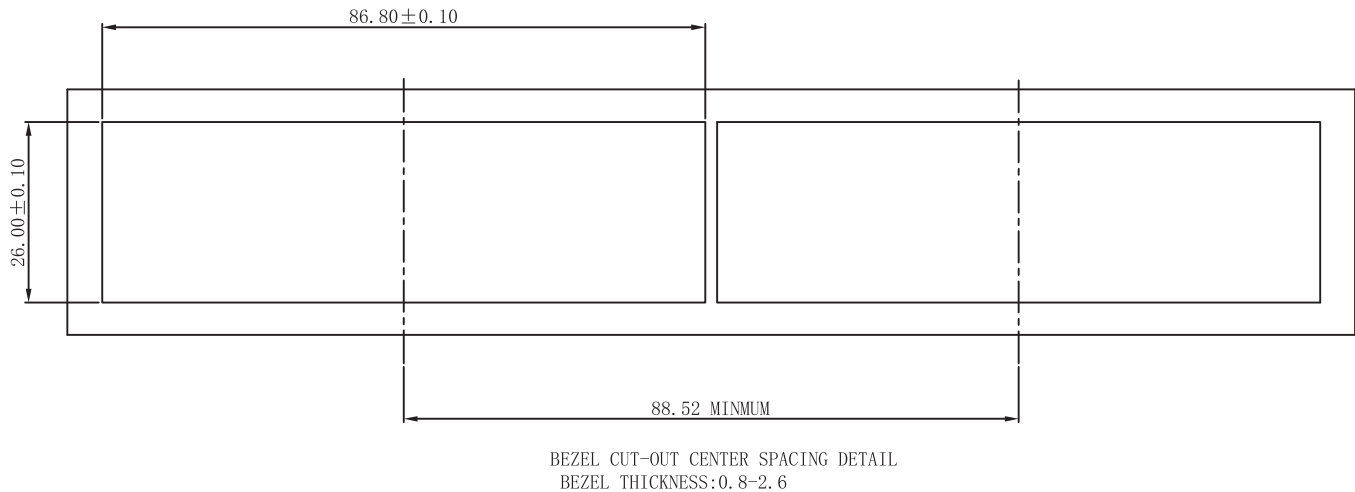
1/4



**VOOHU** 苏州沃虎电子科技有限公司  
Su Zhou Voohu Electronic Tech.Co.Ltd

TEL: +86 400 1048 018

WEB: WWW.WOHU-TEK.COM



RoHS Compliant



苏州沃虎电子科技有限公司  
Su Zhou Voohu Electronic Tech.Co.Ltd

TEL: +86 400 1048 018

WEB: [WWW.WOHU-TEK.COM](http://WWW.WOHU-TEK.COM)

TITLE:  
SFP+ 2X6 Press Fit Connector

PART NO.:  
WHSFP16026F108

REMARK:  
gold plated 30u" Ni 30u" Min

SIZE  
A4

SACLE  
1:1

SHEET  
2/4

UNITS  
MM[INCH]

REV  
A0

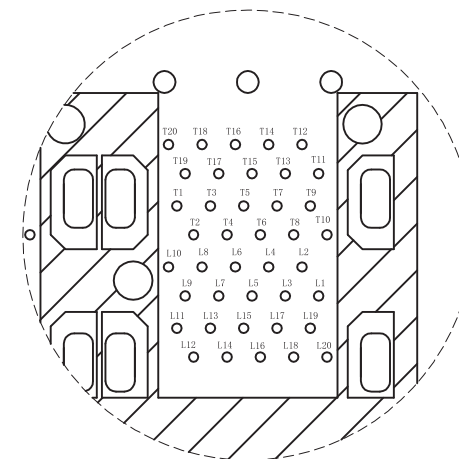
GENERAL TOLERANCES  
UNLESS SPECIFIED

$x \pm 0.35$	$x^\circ \pm 3.0^\circ$
$.x \pm 0.30$	$.x^\circ \pm 2.0^\circ$
$.xx \pm 0.25$	$.xx^\circ \pm 1.5^\circ$
$.xxx \pm 0.10$	$.xxx^\circ \pm 1.0^\circ$

APPROVED BY:  
Geoffrey.Song

CHECKED BY:  
Elvis.Song

DESIGND BY:  
Sunny.Xu



CONNECTOR PIN-OUT  
COMPONENT SIDE OF BOARD

RECOMMENDED PCB LAYOUT-COMPONENT SIDE  
RECOMMENDED PCB THICKNESS-2.63 MM

THE ENTIRE AREA OF THE CONNECTOR FOOTPRINT  
TO BE CONSIDERED THE KEEP OUT AREA FOR COMPONENTS  
(OTHER THAN LIGHT PIPE LED'S)  
THIS AREA IS INDICATED BY THE DASHED LINE

RoHS Compliant



**苏州沃虎电子科技有限公司**  
Su Zhou Voohu Electronic Tech.Co.Ltd

<b>TITLE:</b> SFP+ 2X6 Press Fit Connector
---

SIZE  
A4

UNITS  
MM[INCH]

GENERAL TOLERANCES  
UNLESS SPECIFIED

APPROVED BY:  
Geoffrey.Song

PART NO.:  
WHSFP16026F108

SACLE
1:1

REV  
A0

	$x \pm 0.35$
	$.x \pm 0.30$
	$.xx \pm 0.25$
	$.xxx \pm 0.10$

	$x^{\circ} \pm 3.0^{\circ}$
	$.x^{\circ} \pm 2.0^{\circ}$
	$.xx^{\circ} \pm 1.5^{\circ}$
	$.xxx^{\circ} \pm 1.0^{\circ}$

CHECKED BY:	Elvis.Song
DESIGND BY:	Sunny.Xu

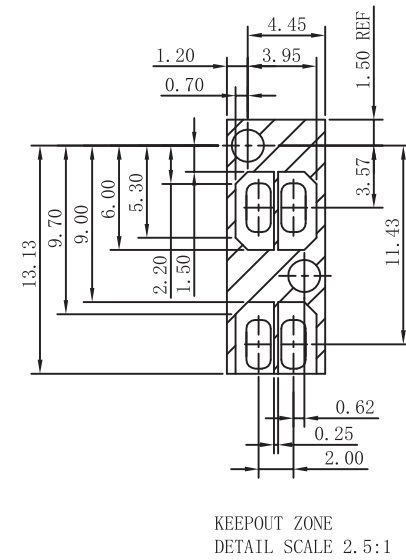
REMARK:
gold plated 30u" Ni 30u" Min

SHEET  
3/4



TEL: +86 400 1048 018

WEB: [WWW.WOHU-TEK.COM](http://WWW.WOHU-TEK.COM)



DESIGND BY:  
Sunny.Xu