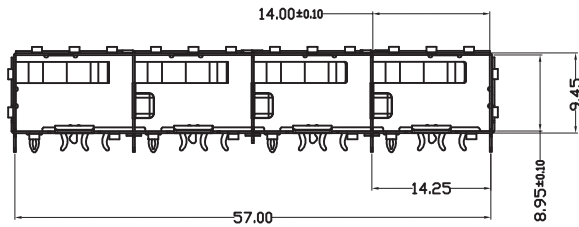
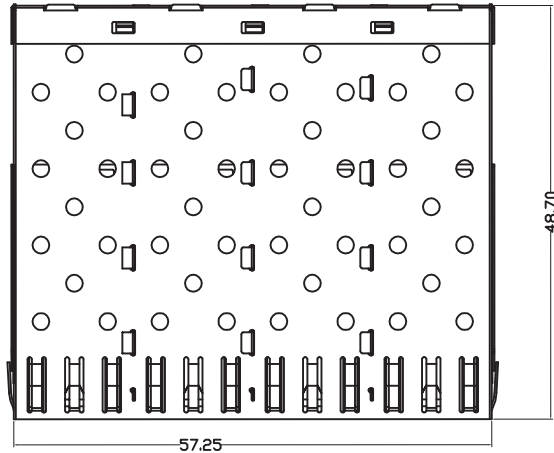


CUSTOMER DRAWING



NOTE:

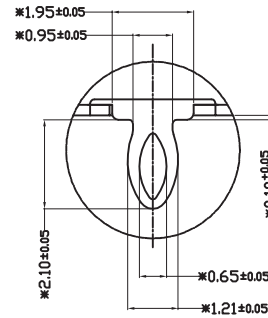
1, DESCRIPTION	Q'ty	MATERIAL
SFP TOP CAGE	1PCS	COPPER ALLOY T=0.25
SFP BOTTOM CAGE	1PCS	COPPER ALLOY T=0.25
SFP MID CAGE	3PCS	COPPER ALLOY T=0.25
SFP REAR CAGE	1PCS	COPPER ALLOY T=0.25

2, TEMPERATURE:

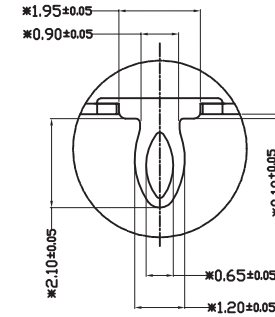
OPERATION: -40°C~+85°C

STORAGE: -55°C~+105°C

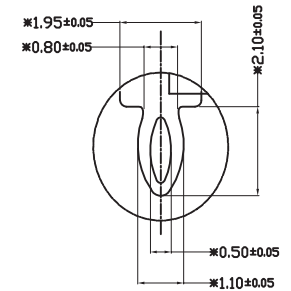
3, PART NUMBER: SEE TABLE



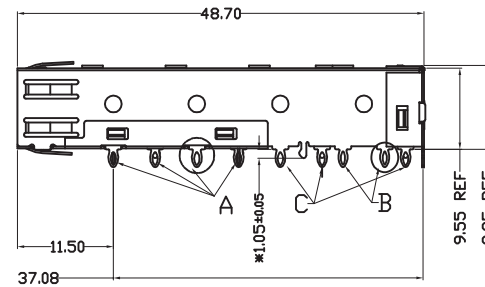
DETAIL : A
SCALE: 5:1



DETAIL : C
SCALE: 5:1



DETAIL : B
SCALE: 5:1



RoHS Compliant

TITLE: SFP 1X4 CAGE
PRESS-FIT W/ ARC PIN

SIZE
A4

UNITS
MM[INCH]

GENERAL TOLERANCES
UNLESS SPECIFIED

APPROVED BY:
Geoffrey.Song

PART NO.:
WHSFP01014W006

SACLE
1:1

REV
A0

± 0.35
 ± 0.30
 ± 0.25
 ± 0.10

$\pm 3.0^\circ$
 $\pm 2.0^\circ$
 $\pm 1.5^\circ$
 $\pm 1.0^\circ$

CHECKED BY:
Elvis.Song
DESIGND BY:
Sunny.Xu

REMARK:

SHEET
1/2

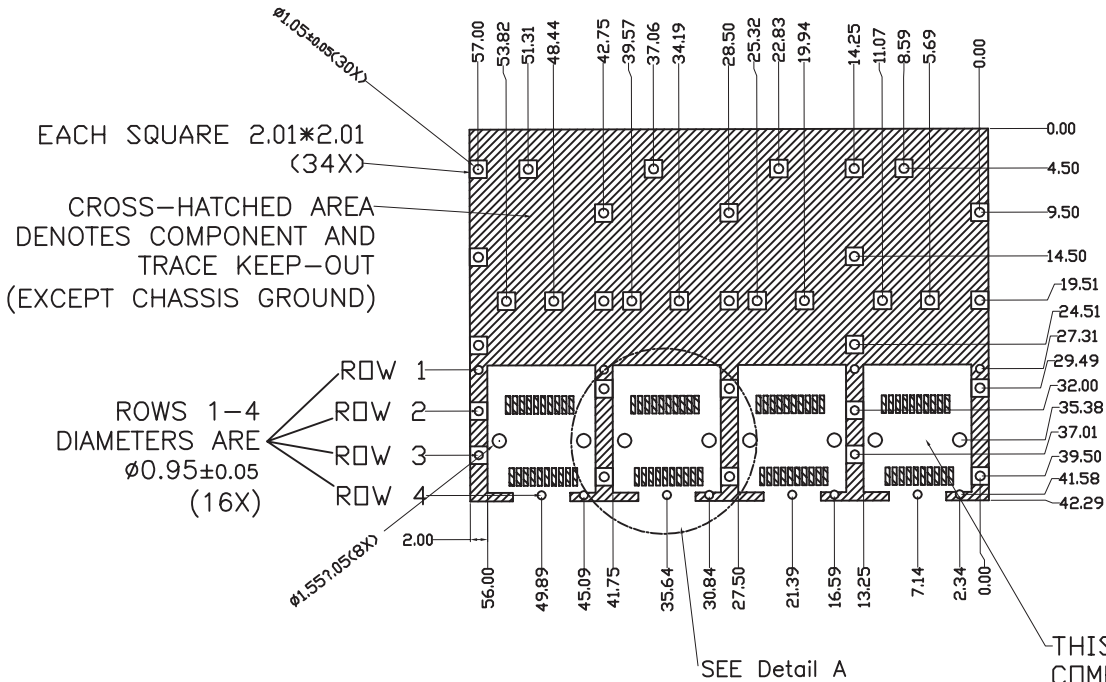
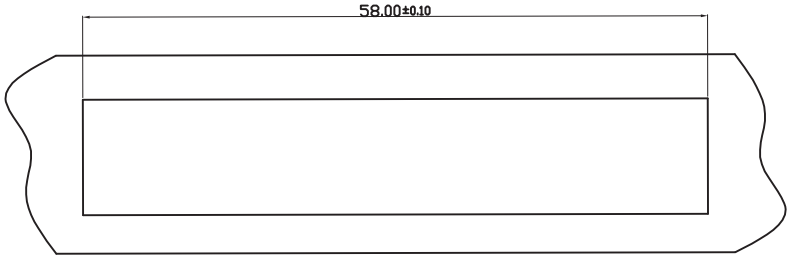


VOOHU 苏州沃虎电子科技有限公司
Su Zhou Voohu Electronic Tech.Co.Ltd

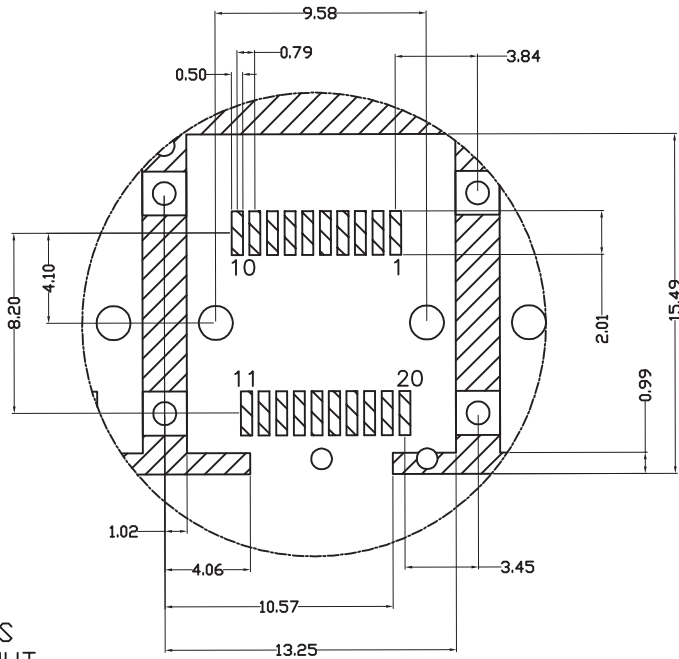
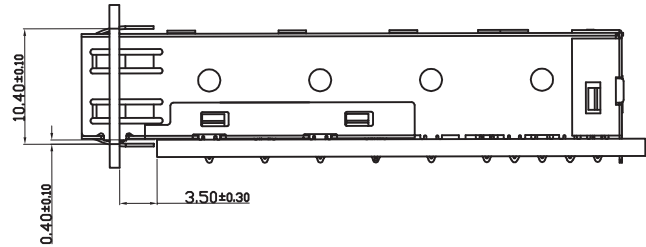
TEL: +86 400 1048 018

WEB: WWW.WOHU-TEK.COM

CUSTOMER DRAWING



PCB LAYOUT THICKNESS=3.0MM (TOP VIEW)



SEE Detail A
SCALE 2.5:1

RoHS Compliant



苏州沃虎电子科技有限公司
Su Zhou Voohu Electronic Tech.Co.Ltd

TITLE: SFP 1X4 CAGE
PRESS-FIT W/ ARC PIN

SIZE
A4

UNITS
MM[INCH]

GENERAL TOLERANCES
UNLESS SPECIFIED

APPROVED BY:
Geoffrey.Song

PART NO.:
WHSFP01014W006

SACLE
1:1

REV
A0

$x \pm 0.35$
 $.x \pm 0.30$

$x^\circ \pm 3.0^\circ$
 $.x^\circ \pm 2.0^\circ$

CHECKED BY:
Elvis.Song

TEL: +86 400 1048 018

WEB: WWW.WOHU-TEK.COM

REMARK:

SHEET
2/2



$.xx \pm 0.25$
 $.xxx \pm 0.10$

$.xx^\circ \pm 1.5^\circ$
 $.xxx^\circ \pm 1.0^\circ$

DESIGND BY:
Sunny.Xu