

NOTE:

MATERIAL:

1. CONTACT: COPPER ALLOY.

2. HOUSING: HIGH TEMPERATURE  
THERMOPLASTIC GLASS FILLED UL 94V-0.  
BLACK.

CONTACT FINISH:

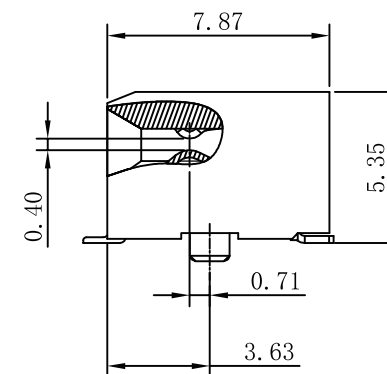
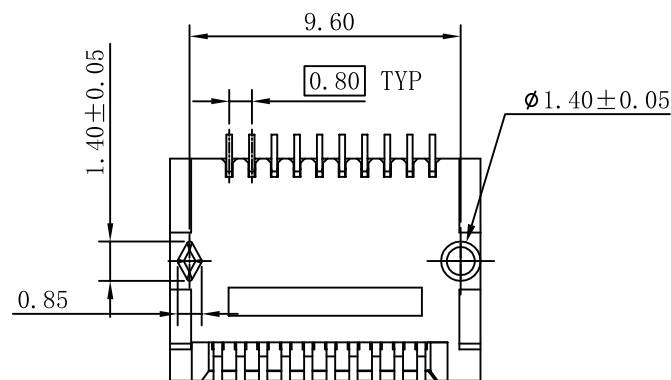
1. MATING AREA : PLATING GOLD  
15u" OR 30u" MIN OVER 50u" MIN  
NICKEL.

2. SOLDER TAILS: PLATING TIN  
100u" MIN OVER 50u" MIN NICKEL.

ENVIRONMENTAL:

1. OPERATION: -40°C ~ +105°C.

2. STORAGE: -55°C ~ +105°C.



RoHS Compliant



苏州沃虎电子科技有限公司  
Su Zhou Voohu Electronic Tech.Co.Ltd

TITLE:  
SFP28 1×1 CONNECTOR

SIZE  
A4

UNITS  
MM[INCH]

GENERAL TOLERANCES  
UNLESS SPECIFIED

APPROVED BY:  
Geoffrey.Song

PART NO.:  
WHSFP30111D002

SACLE  
1:1

REV  
A0

$x \pm 0.35$   
 $.x \pm 0.30$

$x^\circ \pm 3.0^\circ$   
 $.x^\circ \pm 2.0^\circ$

CHECKED BY:  
Elvis.Song

REMARK:

SHEET  
1/2



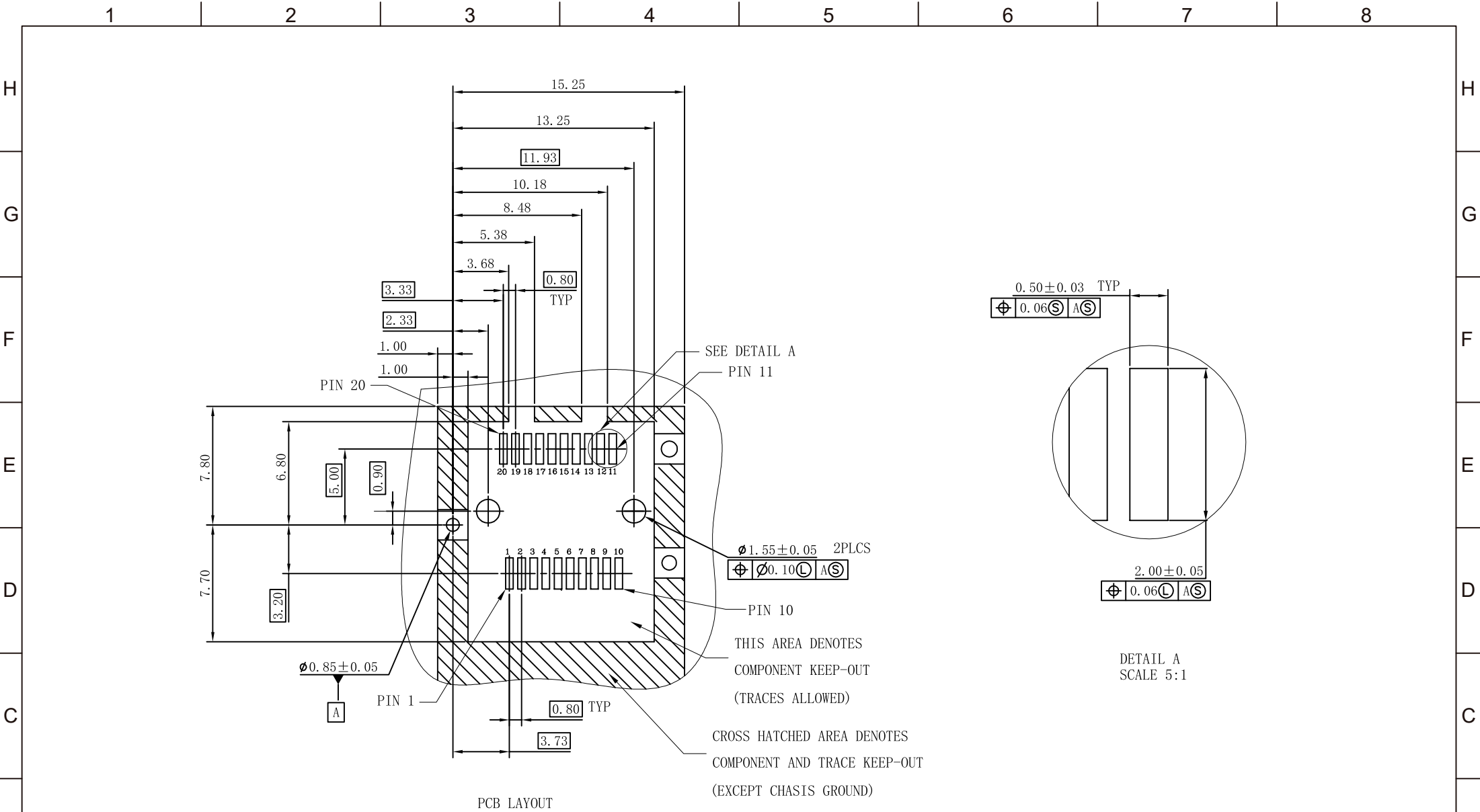
$.xx \pm 0.25$   
 $.xxx \pm 0.10$

$.xx^\circ \pm 1.5^\circ$   
 $.xxx^\circ \pm 1.0^\circ$

DESIGND BY:  
Sunny.Xu

TEL: +86 400 1048 018

WEB: [WWW.WOHU-TEK.COM](http://WWW.WOHU-TEK.COM)



RoHS Compliant



苏州沃虎电子科技有限公司  
Su Zhou Voohu Electronic Tech.Co.Ltd

TEL: +86 400 1048 018

WEB: [WWW.WOHU-TEK.COM](http://WWW.WOHU-TEK.COM)

TITLE:  
SFP28 1×1 CONNECTOR

PART NO.:  
WHSFP30111D002

REMARK:

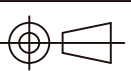
SIZE  
A4

SACLE  
1:1

SHEET  
2/2

UNITS  
MM[INCH]

REV  
A0



GENERAL TOLERANCES  
UNLESS SPECIFIED

$x \pm 0.35$   
 $.x \pm 0.30$   
 $.xx \pm 0.25$   
 $.xxx \pm 0.10$

APPROVED BY:  
Geoffrey.Song

CHECKED BY:  
Elvis.Song

DESIGND BY:  
Sunny.Xu