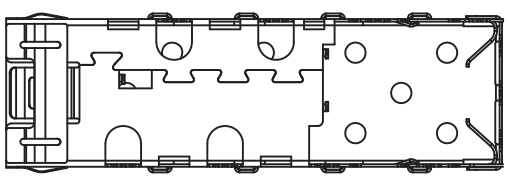
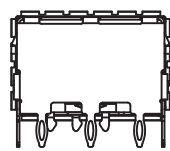
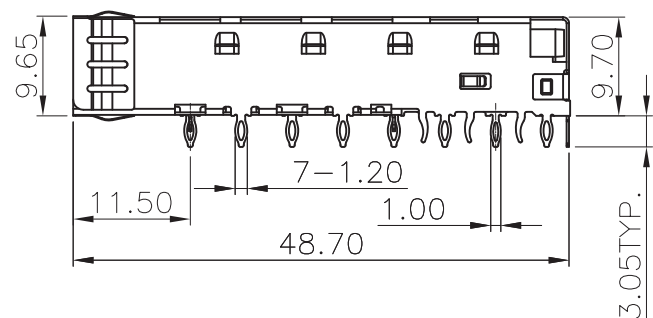
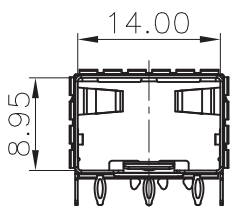
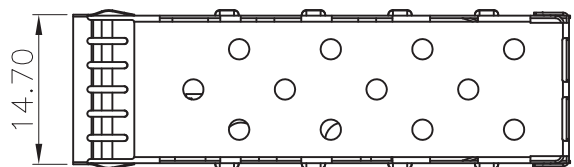
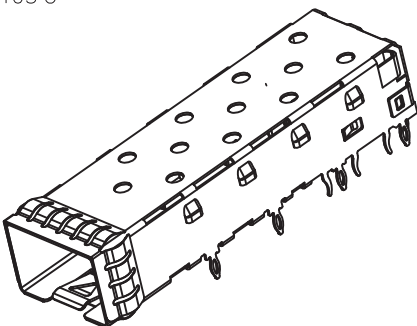


Customer drawings

NOTE:  
1, DESCRIPTION  
SFP 1X1 CAGE  
Q'ty 1PCS MATERIAL COPPER ALLOY T=0.25 PLATING SEE TABLE  
2, TEMPERATURE:  
OPERATION: -40°C~+85°C  
STORAGE: -55°C~+105°C

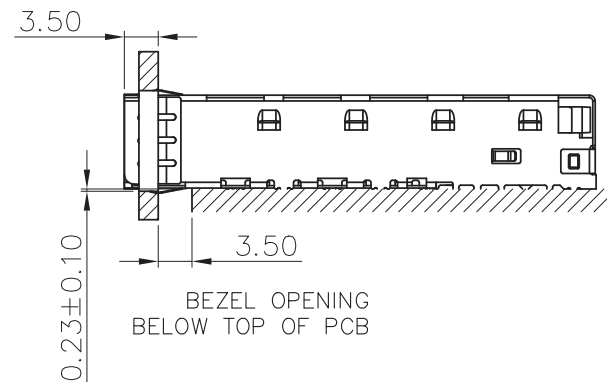
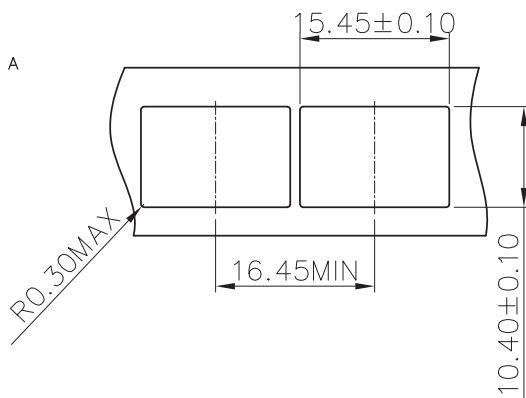
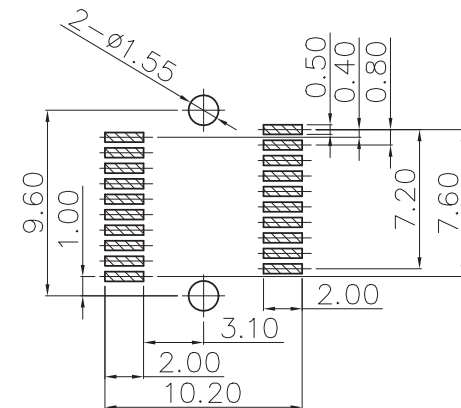
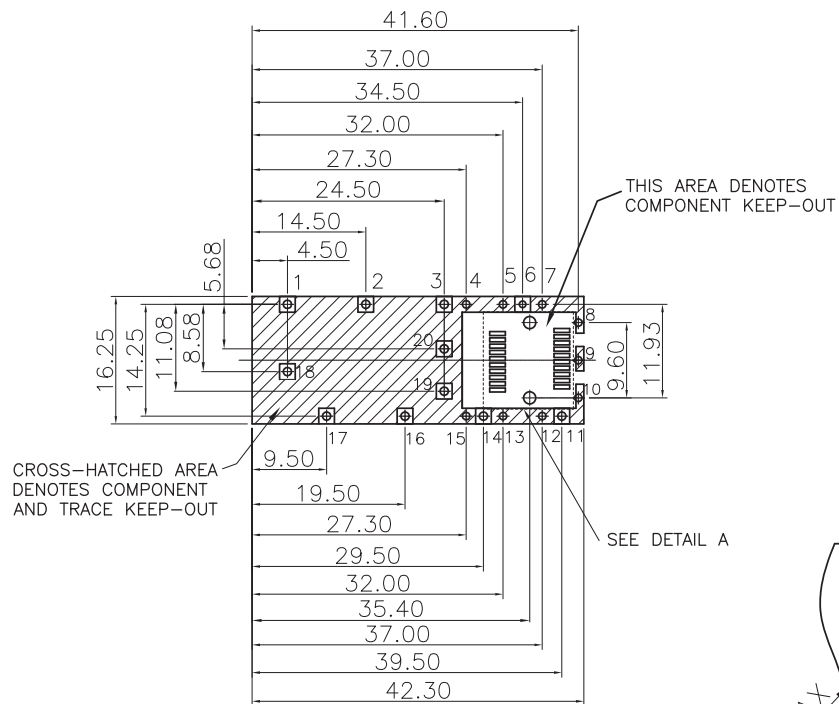


**VOOHU** 苏州沃虎电子科技有限公司  
Su Zhou Voohu Electronic Tech.Co.Ltd

TEL: +86 400 1048 018 WEB: [WWW.WOHU-TEK.COM](http://WWW.WOHU-TEK.COM)

TITLE: SFP+ 1x1 CAGC	SIZE A4	UNITS MM[INCH]	GENERAL TOLERANCES UNLESS SPECIFIED		APPROVED BY: Geoffrey.Song
PART NO.: WH81-111-Y0012-1	SACLE 1:1	REV A0	x±0.35	x°±3.0°	CHECKED BY: Elvis.Song
			.x±0.30	.x°±2.0°	
REMARK:	SHEET 1/2		.xx±0.25	.xx°±1.5°	DESIGND BY: Sunny.Xu
			.xxx±0.10	.xxx°±1.0°	

Customer drawings



1. RECOMMENDED PCB THICKNESS: 2.36 (TOP VIEW)  
(MINIMUM PCB THICKNESS: 1.57)  
(ALL TOLERANCES ARE  $\pm$ 0.05)

RECOMMENDED PANEL CUTOUT AND PC BOARD  
PANEL POSITION AND THICKNESS 0.8–2.6

NOTE:  
1,2,3,11,14,16,17#孔直径为1.05mm;  
4, 5, 7, 8, 9, 10, 12, 13, 15#孔直径为0.95mm;  
6#孔直径为0.85mm;

**VOOHU** 苏州沃虎电子科技有限公司  
Su Zhou Voohu Electronic Tech.Co.Ltd

TITLE:  
SFP+ 1x1 CAGC  
PART NO.:  
WH81-111-Y0012-1

SIZE  
A4  
SACLE  
1:1  
REV  
A0

UNITS  
MM[INCH]  
GENERAL TOLERANCES  
UNLESS SPECIFIED  
 $x\pm 0.35$   
 $x^\circ\pm 3.0^\circ$   
 $.x\pm 0.30$   
 $.x^\circ\pm 2.0^\circ$   
 $.xx\pm 0.25$   
 $.xx^\circ\pm 1.5^\circ$   
 $.xxx\pm 0.10$   
 $.xxx^\circ\pm 1.0^\circ$

APPROVED BY:  
Geoffrey.Song  
CHECKED BY:  
Elvis.Song  
DESIGND BY:  
Sunny.Xu

TEL: +86 400 1048 018  
WEB: [WWW.WOHU-TEK.COM](http://WWW.WOHU-TEK.COM)

REMARK:

SHEET  
2/2

