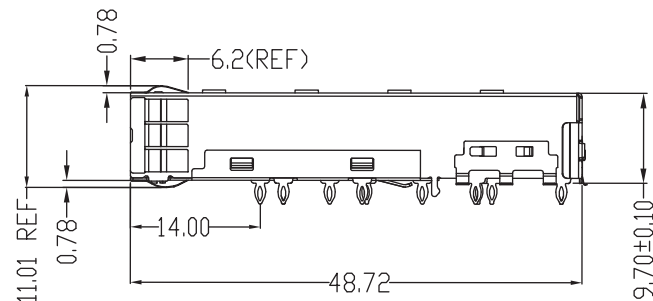
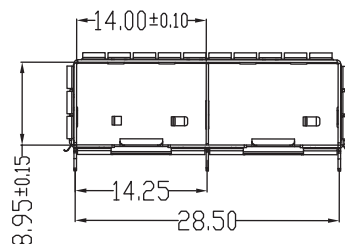
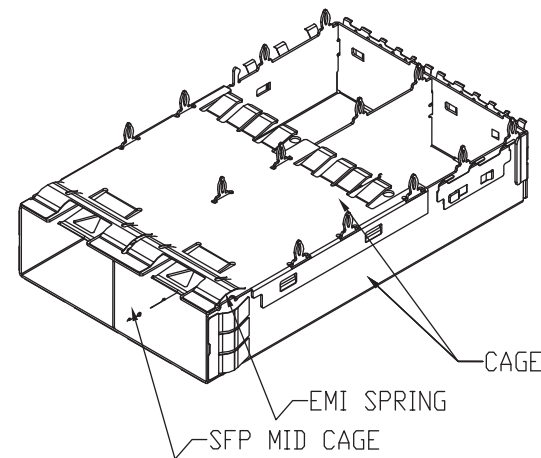
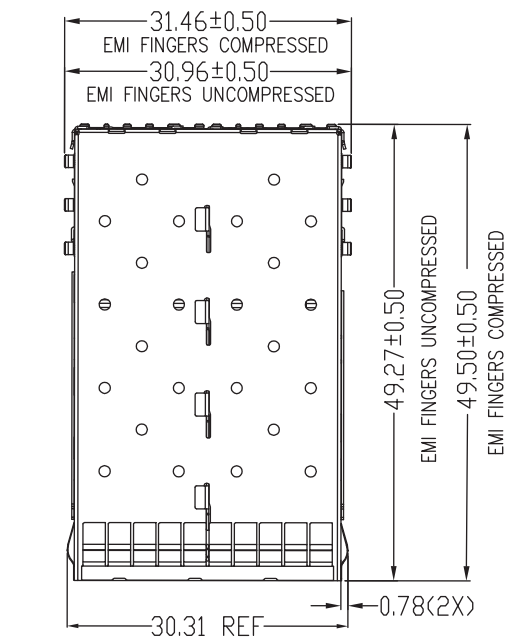



REACH & RoHS
COMPLIANT



NOTE:
1.MATERIAL
CAGE: COPPER ALLOY
SFP MID CAGE: COPPER ALLOY
EMI SPRINGS: COPPER ALLOY
2.PLATING
CAGE: Ni FOR ALL
SFP MID CAGE: Ni FOR ALL
EMI SPRINGS: Ni FOR ALL
3.TEMPERATURE:
OPERATION: -40°C~+85°C
STORAGE: -55°C~+105°C

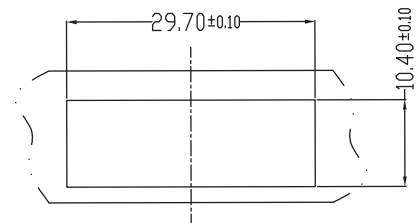
TITLE: SFP28 1X2 CAGE PRESS FIT	SIZE A4	UNITS MM[INCH]	GENERAL TOLERANCES UNLESS SPECIFIED		APPROVED BY: Geoffrey.Song
PART NO.: WHSFP30412W009	SACLE 1:1	REV A0	x±0.35	x°±3.0°	CHECKED BY: Elvis.Song
			.x±0.30	.x°±2.0°	
REMARK:	SHEET 1/2		.xx±0.25	.xx°±1.5°	DESIGND BY: Sunny.Xu
			.xxx±0.10	.xxx°±1.0°	

VOOHU 苏州沃虎电子科技有限公司
Su Zhou Voohu Electronic Tech.Co.Ltd

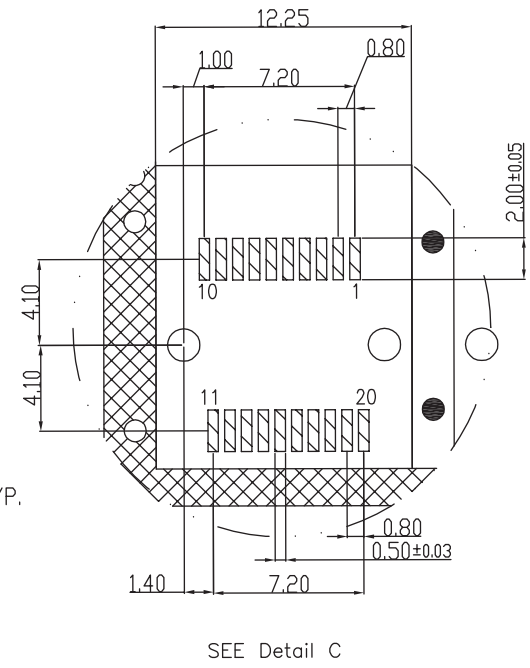
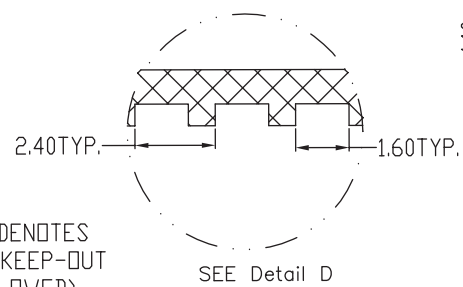
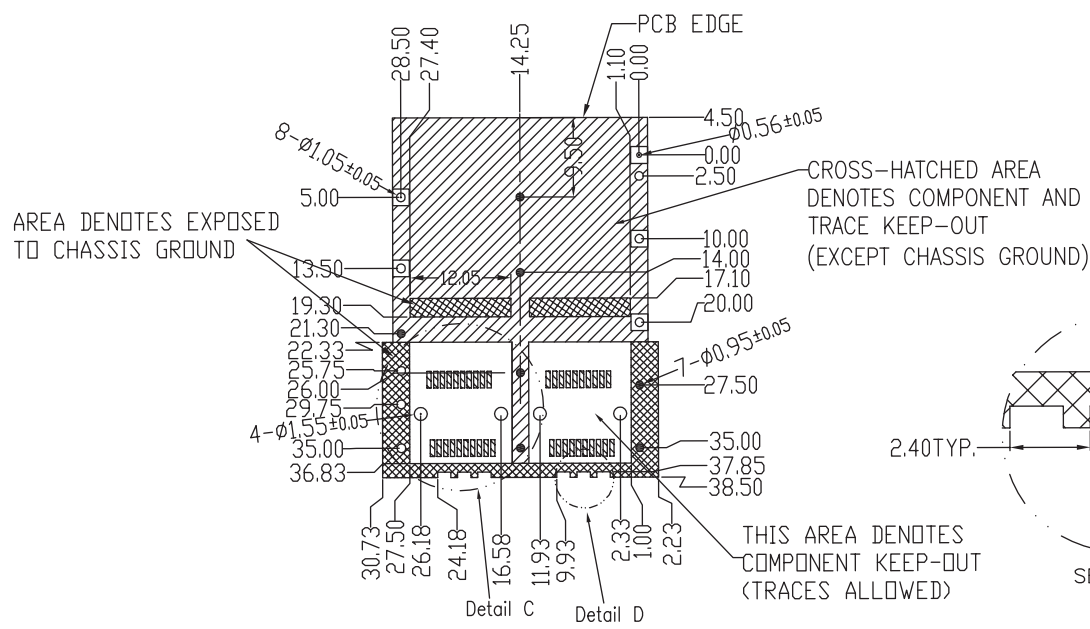
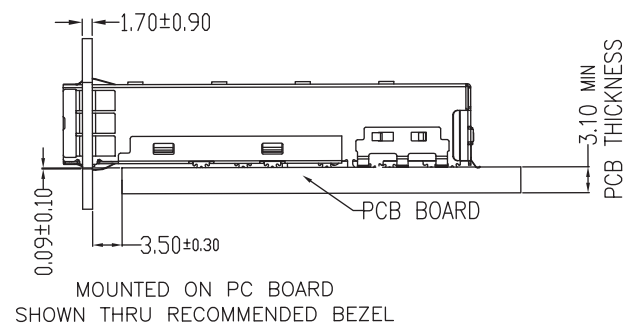
TEL: +86 400 1048 018

WEB: WWW.WOHU-TEK.COM

REACH & RoHS
COMPLIANT



RECOMMENDED BEZEL CUT-OUT SINGLE SIDED APPLICATIONS



TITLE: SFP28 1X2 CAGE PRESS FIT	SIZE A4	UNITS MM[INCH]	GENERAL TOLERANCES UNLESS SPECIFIED		APPROVED BY: Geoffrey.Song
PART NO.: WHSFP30412W009	SCALE 1:1	REV A0	$x \pm 0.35$	$x^\circ \pm 3.0^\circ$	CHECKED BY: Elvis.Song
			$.x \pm 0.30$	$.x^\circ \pm 2.0^\circ$	
REMARK:	SHEET 2/2		$.xx \pm 0.25$	$.xx^\circ \pm 1.5^\circ$	DESIGN BY: Sunny.Xu
			$.xxx \pm 0.10$	$.xxx^\circ \pm 1.0^\circ$	

VOOHU 苏州沃虎电子科技有限公司
Su Zhou Voohu Electronic Tech.Co.Ltd

TEL: +86 400 1048 018 WEB: WWW.WOHU-TEK.COM