

1
2
3
4
5
6
7
8

REACH & RoHS
COMPLIANT

H

G

F

E

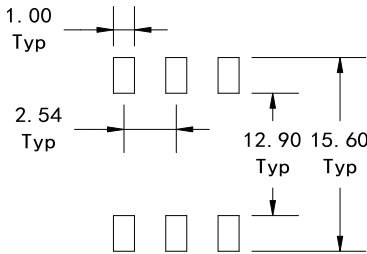
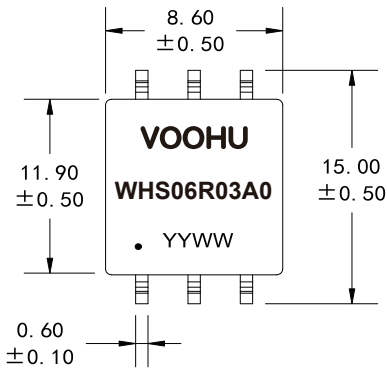
D

C

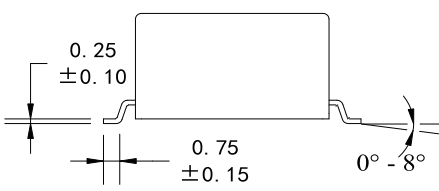
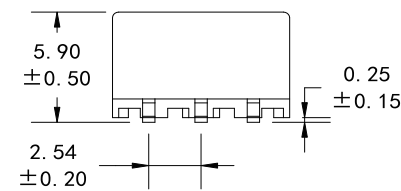
B

A

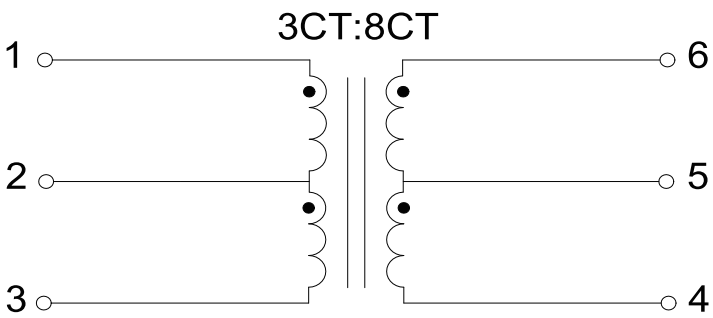
A. MECHANICAL(unit:mm)



Suggested PAD Layout



B. SCHEMATICS



VOOHU 苏州沃虎电子科技有限公司
Su Zhou Voohu Electronic Tech.Co.Ltd

TEL: +86 400 1048 018

WEB: WWW.WOHU-TEK.COM

TITLE:
Transformer

PART NO.:
WHS06R03A0

REMARK:Automotive Application
Meet AEC-Q200 Standard

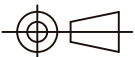
SIZE
A4

SACLE
1:1

SHEET
1/2

UNITS
MM[INCH]

REV
A0



GENERAL TOLERANCES
UNLESS SPECIFIED

x±0.35
.x±0.30

.xx±0.25
.xxx±0.10

APPROVED BY:
Geoffrey.Song

CHECKED BY:
Elvis.Song

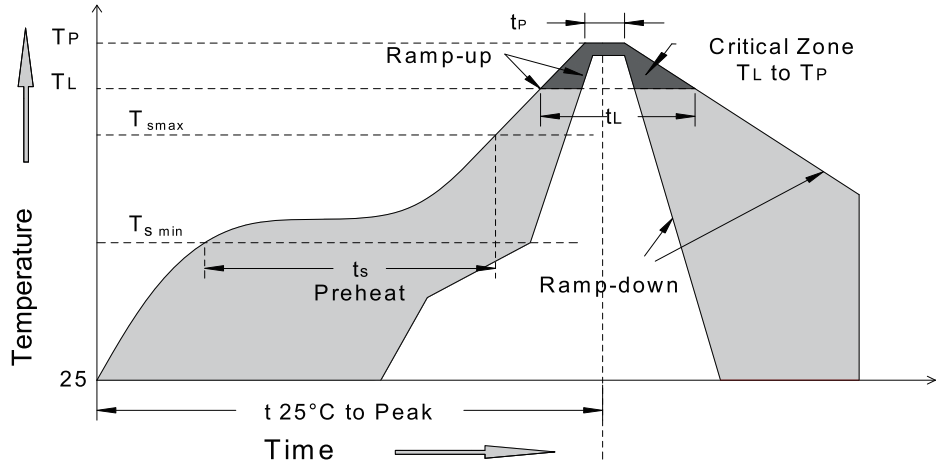
DESIGND BY:
Sunny.Xu

REACH & RoHS
COMPLIANT

C. ELECTRICAL SPECIFICATIONS @25°C

- Unless Otherwise Specified, Testing is Performed at 25°C ± 5°C
- 1. OCL(Pin1-3): 538uH Typ @ 100 KHz, 0.1V @25°C
 - 2. Leakage Inductance: 0.7uH Max @ 100KHz, 0.1V
 - 3. DCR(Pin1-3): 400mΩ Max
DCR(Pin6-4): 900mΩ Max
 - 4. Turns Ratio: (Pin1-3):(Pin6-4)=3CT:8CT±5%
 - 5. Isolation Hipot: 4000Vrms
 - 6. 9.5mm minimum creepage & clearance distance between PRI&SEC
 - 7. Operating temperature -40°C to +125°C
 - 8. Storage Temperature(With Package): +10°C to +40°C
 - 9. Storage Temperature(Without Package, Just For Components): -40°C to +125°C
 - 10. RoHS Compliant
 - 11. Qualification: Meet AEC-Q200

D. RECOMMEND REFLOW SOLDERING CURVE



MSL:
Grade: 1 level. Floor life: 0.5 year Condition:≤30°C/60%RH.
Ramp up rate=3°C/s max Ramp down rate=6°C/s max
TL=217°C tL=60s-150s Tp=250+/-3°C Time within 5°C of actual Peak Temperature (tp): 20~40s
Ts min=150°C Ts max=200°C Ts min to Ts max: 60s-180s, 25°C to peak Temperature: 8minutes max

VOOHU 苏州沃虎电子科技有限公司
Su Zhou Voohu Electronic Tech.Co.Ltd

TEL: +86 400 1048 018

WEB: WWW.WOHU-TEK.COM

TITLE:
Transformer

PART NO.:
WHS06R03A0

REMARK:Automotive Application
Meet AEC-Q200 Standard

SIZE
A4

SACLE
1:1

SHEET
2/2

UNITS
MM[INCH]

REV
A0



GENERAL TOLERANCES
UNLESS SPECIFIED

x±0.35
.x±0.30

.xx±0.25
.xxx±0.10

APPROVED BY:
Geoffrey.Song

CHECKED BY:
Elvis.Song

DESIGND BY:
Sunny.Xu