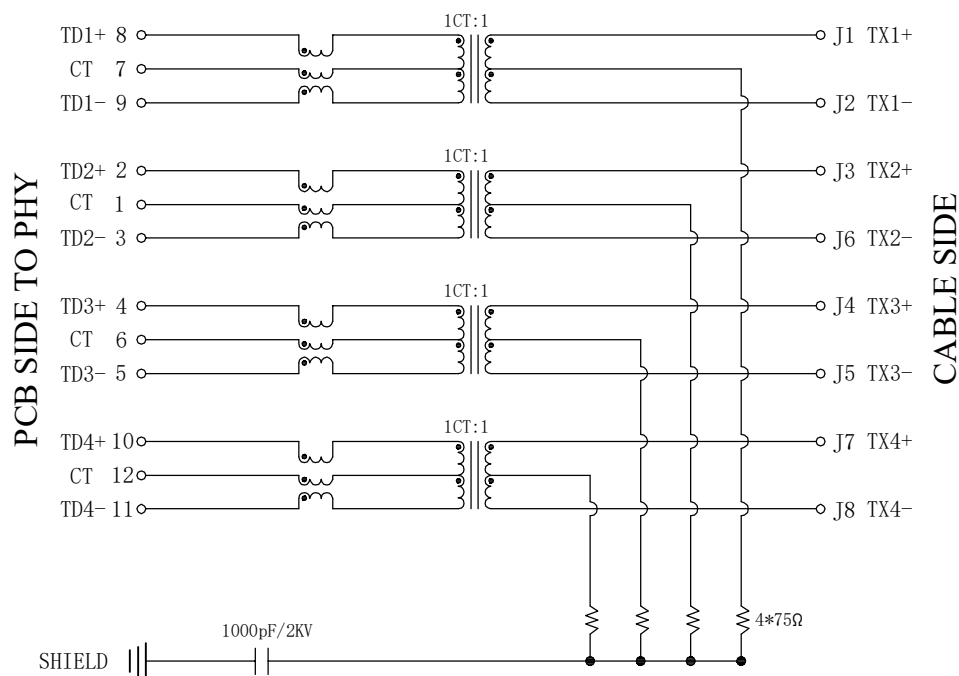




REACH & RoHS  
COMPLIANT

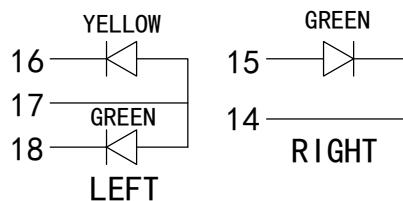


### Electrical:

- Turn ratio: 8~9:J1~J2=1CT:1CT(±2%).  
2~1:J3~J6=1CT:1CT(±2%).  
4~5:J4~J5=1CT:1CT(±2%).  
10~11:J7~J8=1CT:1CT(±2%).
- OCL:120uH Min.@ 100KHz 0.1V.
- Insertion Loss:-0.5 dB Min. 1~50MHz.  
-1.2 dB Min. 50~125MHz.  
-2 dB Min. 125~250MHz.
- Return loss: -16dB Min 1~40MHz;  
16+10LOG10(f/40) 40~250MHz.
- CMR: -30dB Min 1~40MHz;  
-28dB Min 40~100MHz;  
-26dB Min 100~500MHz;
- Common talk: -30dB Min 1~250MHz;

### LED Specification

Standard LED Color	LED Wavelength	Foward(A)	Foward(V)
Green	568nm	20mA	1.85-2.45V
Yellow	585nm	20mA	1.7-2.2V



TITLE:  
TAB-DOWN 1X1 5G

SIZE  
A4

UNITS  
MM[INCH]

GENERAL TOLERANCES  
UNLESS SPECIFIED

APPROVED BY:  
Geoffrey.Song

PART NO.:  
SYT1611Q002FF3A2DC5057 (5G)

SACLE  
1:1

REV  
A0

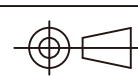
$x \pm 0.35$   
 $.x \pm 0.30$   
 $.xx \pm 0.25$   
 $.xxx \pm 0.10$

$x^\circ \pm 3.0^\circ$   
 $.x^\circ \pm 2.0^\circ$   
 $.xx^\circ \pm 1.5^\circ$   
 $.xxx^\circ \pm 1.0^\circ$

CHECKED BY:  
Elvis.Song  
DESIGND BY:  
Sunny.Xu

REMARK:

SHEET  
2/3



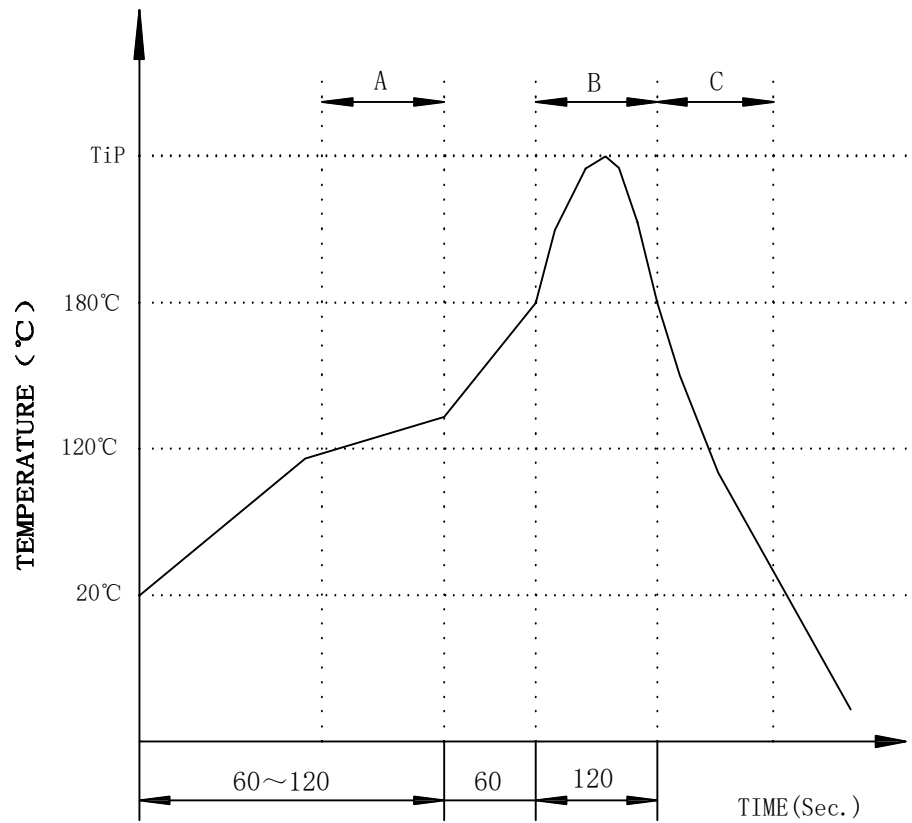
**VOOHU** 苏州沃虎电子科技有限公司  
Su Zhou Voohu Electronic Tech.Co.Ltd

TEL: +86 400 1048 018

WEB: [WWW.WOHU-TEK.COM](http://WWW.WOHU-TEK.COM)

REACH & RoHS  
COMPLIANT

# PROFILE OF WAVE SOLDER



**VOOHU** 苏州沃虎电子科技有限公司  
Su Zhou Voohu Electronic Tech.Co.Ltd

TEL: +86 400 1048 018

WEB: [WWW.WOHU-TEK.COM](http://WWW.WOHU-TEK.COM)

TITLE:  
TAB-DOWN 1X1 5G

PART NO.:  
SYT1611Q002FF3A2DC5057 (5G)

REMARK:

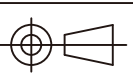
SIZE  
A4

SACLE  
1:1

SHEET  
3/3

UNITS  
MM[INCH]

REV  
A0



GENERAL TOLERANCES  
UNLESS SPECIFIED

$x \pm 0.35$	$x^{\circ} \pm 3.0^{\circ}$
$.x \pm 0.30$	$.x^{\circ} \pm 2.0^{\circ}$
$.xx \pm 0.25$	$.xx^{\circ} \pm 1.5^{\circ}$
$.xxx \pm 0.10$	$.xxx^{\circ} \pm 1.0^{\circ}$

APPROVED BY:  
Geoffrey.Song

CHECKED BY:  
Elvis.Song

DESIGND BY:  
Sunny.Xu