



HOUSING: LCP,UL94V-0,BLACK.
TERMINALS BRACKET: LCP,UL94V-0,BLACK.
SHIELD: C2680,T=0.20MM,NICKEL PLATING ON ALL AREA.
TERMINAL: PHOSPHOR BRONZE C5191,T=0.35MM,
6U" GOLD PLATING ON CONTACT AREA.

DURABILITY: 750 CYCLES MIN.
MATING FORCE: 23N MAX.
OPERATING TEMPERATURE: -40°C~+85°C.
STORAGE TEMPERATURE: -40°C~+85°C.
ALL CRITICAL DIMENSIONS WITH "M"

TITLE: RJ45 1x1 1000BASE
PART NO.: SYT1211Q008FF1A10D057

WEB: WWW.WOHU-TEK.COM

REMARK:

SIZE
A4

SACLE
1:1

SHEET
1/3

UNITS
MM[INCH]

REV
A0



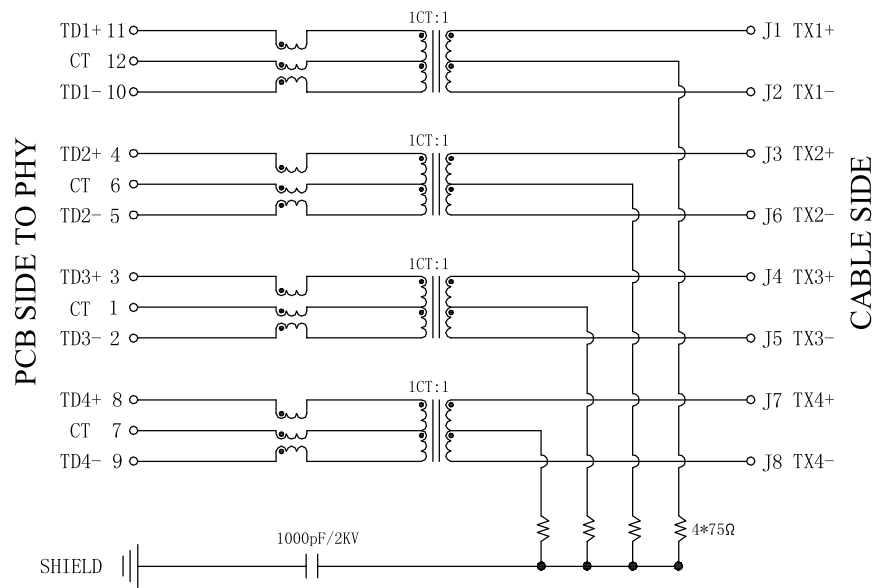
GENERAL TOLERANCES
UNLESS SPECIFIED

	$x \pm 0.35$
	$.x \pm 0.30$
	$.xx \pm 0.25$
	$.xxx \pm 0.10$

TOLERANCES SPECIFIED	APPROVED BY: Geoffrey.Song
-------------------------	-------------------------------

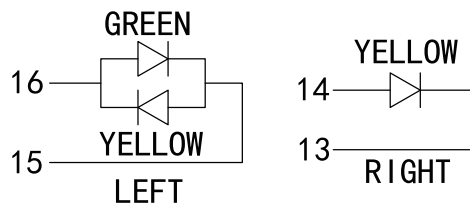
$x^{\circ} \pm 3.0^{\circ}$	CHECKED BY: Elvis.Song
$.x^{\circ} \pm 2.0^{\circ}$	
$.xx^{\circ} \pm 1.5^{\circ}$	DESIGND BY: Sunny.Xu
$.xxx^{\circ} \pm 1.0^{\circ}$	

1	2	3	4	5	6	7	8		
REACH & RoHS COMPLIANT						REV.	ECN / DESCRIPTION	BY	DATE
						A0	NEW	Sunny.Xu	2017.11.14




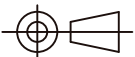
Electrical:

- Turn ratio: 11~10: J1~J2=1CT:1CT(±2%).
4~5: J3~J6=1CT:1CT(±2%).
3~2: J4~J5=1CT:1CT(±2%).
8~9: J7~J8=1CT:1CT(±2%).
- OCL: 160uH Min.at 100KHz 100mV 8mA DC.
- Insertion Loss: -3.0 dB Max 100KHz.
-2.0 dB Max(-1.4dB TYP) 1~400MHz.
- Return loss: -16dB Min 1~40MHz;
-16+10LOG(f/40)dB 40~400MHz.
-6+30LOG(f/400)dB 400~500MHz.
- Cross talk: -28dB Min 1~100MHz;
-19dB Min 100~500MHz;
- CMR: -30dB Min 1~40MHz;
-28dB Min 40~100MHz;
-26dB Min 100~500MHz;
- CDMR: -30dB Min 1~250MHz;
-22dB Min 250~500MHz;
- Hi-Pot: 2250V DC 6S 1mA PRI TO SEC

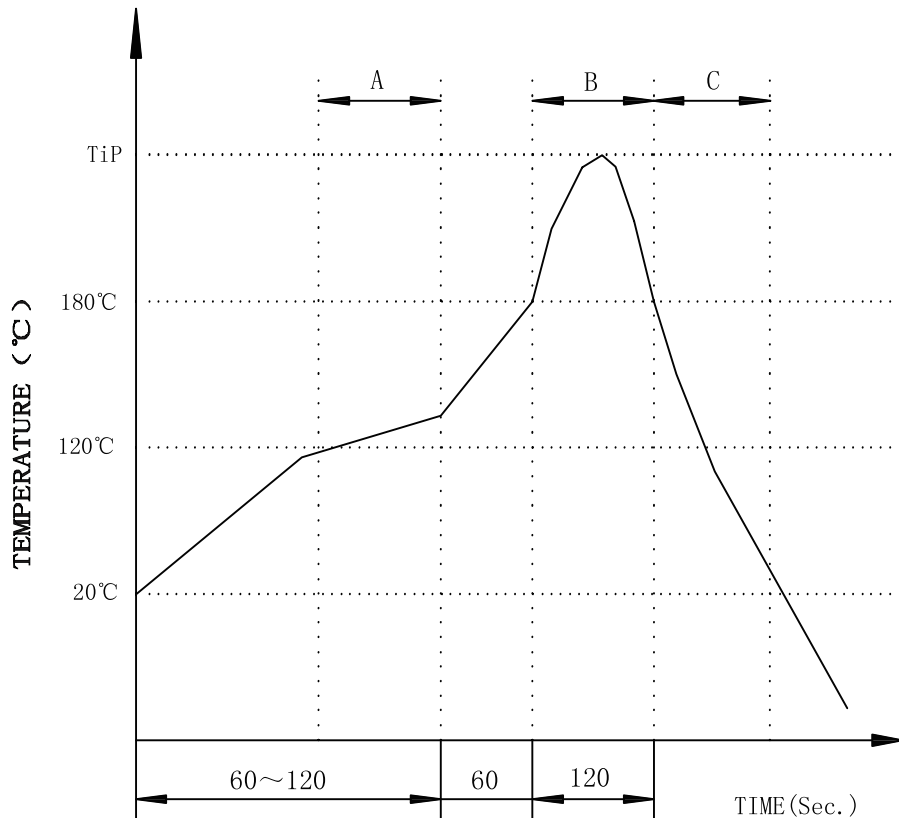


LED Specification

Standard LED Color	LED Wavelength	Foward(A)	Foward(V)
Green	568nm	20mA	1.85-2.45V
Yellow	585nm	20mA	1.7-2.2V

 苏州沃虎电子科技有限公司 Su Zhou Voohu Electronic Tech.Co.Ltd		TITLE: RJ45 1x1 1000BASE	SIZE A4	UNITS MM[INCH]	GENERAL TOLERANCES UNLESS SPECIFIED		APPROVED BY: Geoffrey.Song
		PART NO.: SYT1211Q008FF1A10D057	SACLE 1:1	REV A0	x±0.35	x°±3.0°	CHECKED BY: Elvis.Song
		REMARK:	SHEET 2/3		.xx±0.25	.xx°±1.5°	DESIGND BY: Sunny.Xu
TEL: +86 400 1048 018	WEB: WWW.WOHU-TEK.COM				.xxx±0.10	.xxx°±1.0°	

PROFILE OF WAVE SOLDER



A.Preheating B.Soldering C.Gradual Cooling
Tip temperature:260±5°C.
Tip temperature time:5Sec Max.
Tip melting point of Sn96.5/Ag3/Cu0.5:217°C.

Remarks: after wave soldering, the plastic positioning columns
of the product which under the PCB will be slightly melted,
but it won't affect its function.

1

2

3

4

5

6

7

8