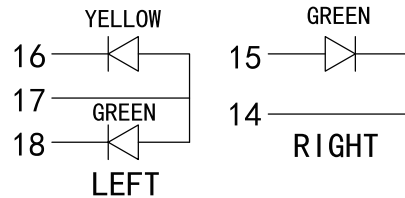
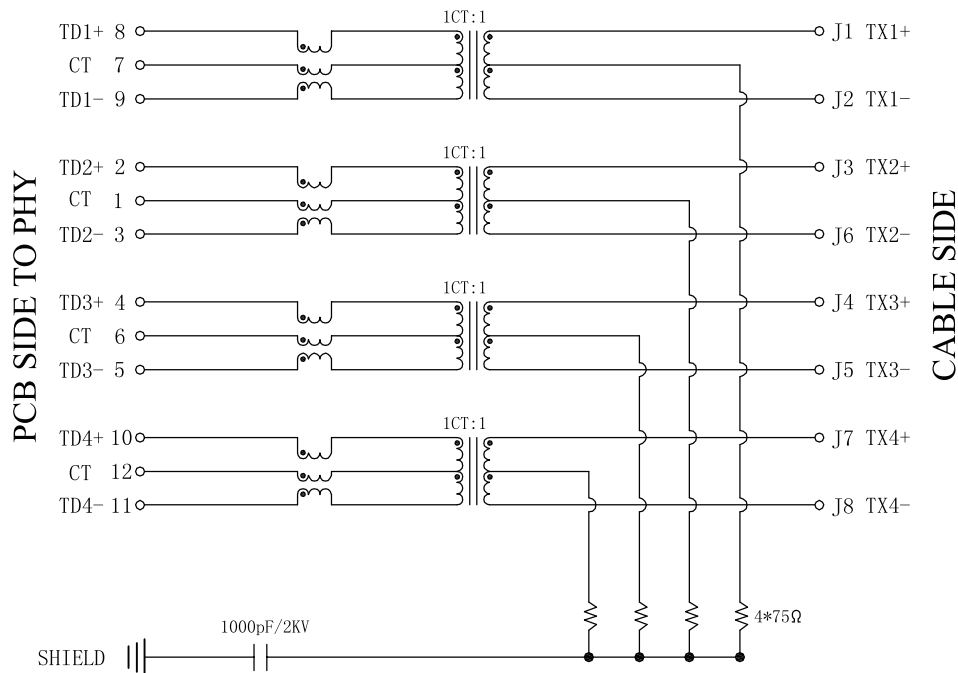


REACH & RoHS
COMPLIANT



Electrical:

- Turn ratio: 8~9: J1~J2=1CT:1CT(±2%).
2~3: J3~J6=1CT:1CT(±2%).
4~5: J4~J5=1CT:1CT(±2%).
10~11: J7~J8=1CT:1CT(±2%).
- OCL: 160uH Min @ 100KHz 100mV.
- Insertion Loss: -3.0 dB Max 100 KHz.
-2.0 dB Max (-1.4dB TYP) 1~400MHz.
- Return loss: -16dB Min 1~40MHz;
-16+10LOG(f/40) dB 40~400MHz.
-6+30LOG(f/400) dB 400~500MHz.
- Cross talk: -28dB Min 1~100MHz;
-19dB Min 100~500MHz;
- CMR: -30dB Min 1~40MHz;
-28dB Min 40~100MHz;
-26dB Min 100~500MHz;
- CDMR: -30dB Min 1~250MHz;
-22dB Min 250~500MHz;
- Hipot-Output isolation: 2250 VDC MIN @ 60 Seconds

LED Specification

Standard LED Color	LED Wavelength	Foward(A)	Foward(V)
Green	568nm	20mA	1.8-2.8V
Yellow	585nm	20mA	1.8-2.8V

VOOHU 苏州沃虎电子科技有限公司
Su Zhou Voohu Electronic Tech.Co.Ltd

TITLE:
TAB-DOWN 1X1 10G

SIZE
A4

UNITS
MM[INCH]

GENERAL TOLERANCES
UNLESS SPECIFIED

APPROVED BY:
Geoffrey.Song

PART NO.:
SYT1611Q002FF3A10DC057 (10G)

SACLE
1:1

REV
A0

x±0.35
.x±0.30

x°±3.0°
.x°±2.0°

CHECKED BY:
Elvis.Song

TEL: +86 400 1048 018

WEB: WWW.WOHU-TEK.COM

REMARK:

SHEET
2/3



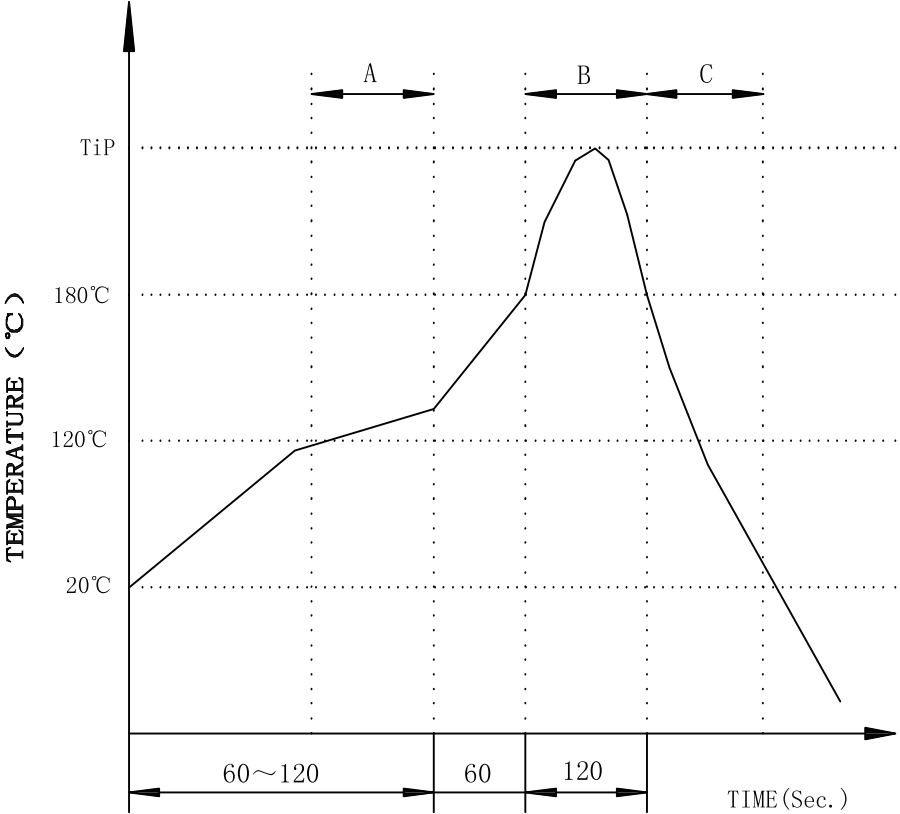
.xx±0.25
.xxx±0.10

.xx°±1.5°
.xxx°±1.0°

DESIGND BY:
Sunny.Xu

REACH & RoHS
COMPLIANT

PROFILE OF WAVE SOLDER



A.Preheating B.Soldering C.Gradual Cooling
Tip temperature:260±5°C.
Tip temperature time:5Sec Max.
Tip melting point of Sn96.5/Ag3/Cu0.5:217°C.

Remarks: after wave soldering, the plastic
positioning columns of the product which under the
PCB will be slightly melted, but it won't affect its
function.

VOOHU 苏州沃虎电子科技有限公司
Su Zhou Voohu Electronic Tech.Co.Ltd

TEL: +86 400 1048 018

WEB: WWW.WOHU-TEK.COM

TITLE:
TAB-DOWN 1X1 10G

PART NO.:
SYT1611Q002FF3A10DC057 (10G)

REMARK:

SIZE
A4

SACLE
1:1

SHEET
3/3

UNITS
MM[INCH]

REV
A0



GENERAL TOLERANCES
UNLESS SPECIFIED

x±0.35
.x±0.30

.xx±0.25
.xxx±0.10

x°±3.0°
.x°±2.0°

.xx°±1.5°
.xxx°±1.0°

APPROVED BY:
Geoffrey.Song

CHECKED BY:
Elvis.Song

DESIGND BY:
Sunny.Xu