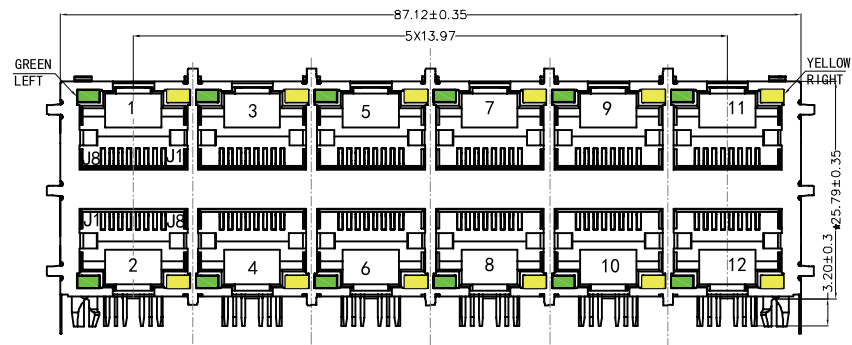
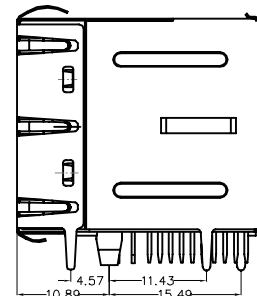


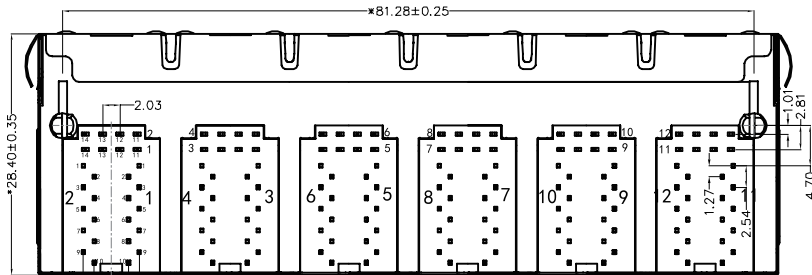
REACH & RoHS  
COMPLIANT



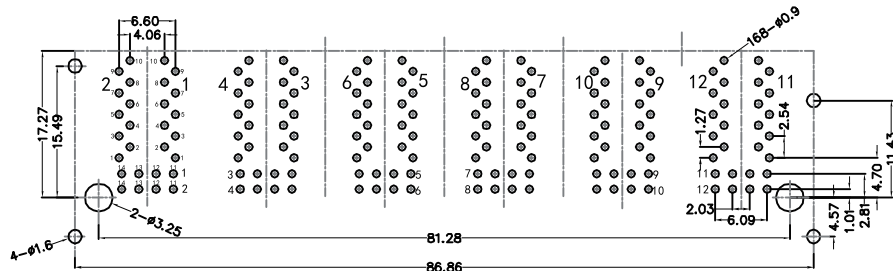
FRONT VIEW



RIGHT SIDE VIEW



BOTTOM VIEW



RECOMMENDED PCB LAYOUT  
VIEWED FROM COMPONENT SIDE

**MATERIAL:**

HOUSING: PBT,UL94V-0,BLACK.

TERMINALS BRACKET: PBT,UL94V-0,BLACK.

SHIELD: C2680,T=0.20MM,NICKEL PLATING ON ALL AREA.

TERMINAL: PHOSPHOR BRONZE C5210,T=0.35MM,  
6U" GOLD PLATING ON CONTACT AREA.

**MECHANICAL:**

DURABILITY: 750 CYCLES MIN.

MATING FORCE: 30N MAX.

OPERATING TEMPERATURE: 0°C~+70°C.

STORAGE TEMPERATURE: -40°C~+85°C.

ALL CRITICAL DIMENSIONS WITH "\*"

**TITLE:**

RJ45 2X6 1000BASE

**PART NO.:**

SYT26Q042DB2A4D068

**REMARK:**

SIZE  
A4

SACLE  
1:1

SHEET  
1/3

UNITS  
MM[INCH]

REV  
A0



GENERAL TOLERANCES  
UNLESS SPECIFIED

$x \pm 0.35$   
 $.x \pm 0.30$   
 $.xx \pm 0.25$   
 $.xxx \pm 0.10$

$x^\circ \pm 3.0^\circ$   
 $.x^\circ \pm 2.0^\circ$   
 $.xx^\circ \pm 1.5^\circ$   
 $.xxx^\circ \pm 1.0^\circ$

**APPROVED BY:**

Geoffrey.Song

**CHECKED BY:**

Elvis.Song

**DESIGND BY:**

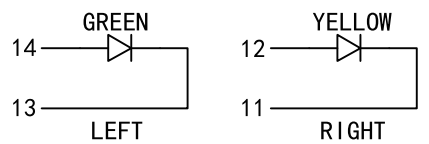
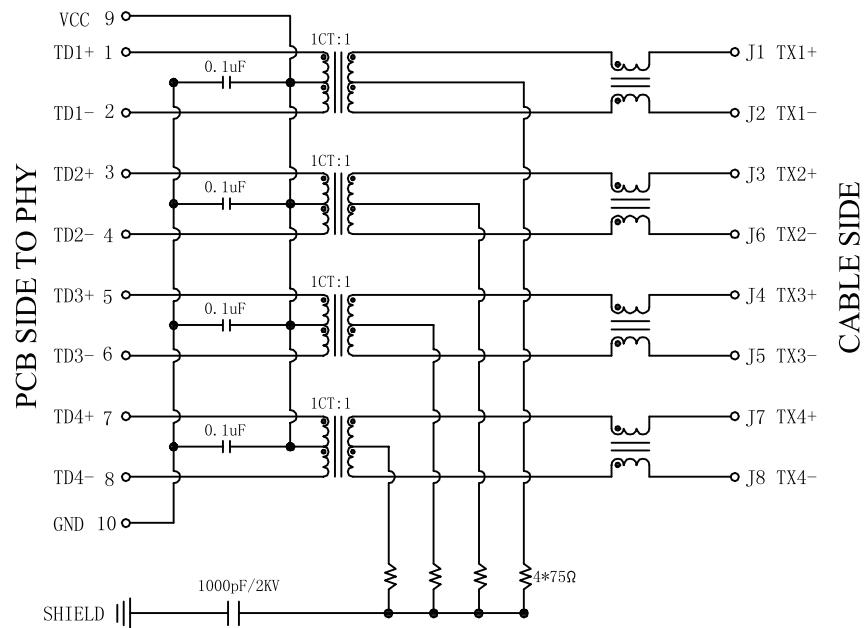
Sunny.Xu

**VOOHU** 苏州沃虎电子科技有限公司  
Su Zhou Voohu Electronic Tech.Co.Ltd

TEL: +86 400 1048 018

WEB: [WWW.WOHU-TEK.COM](http://WWW.WOHU-TEK.COM)

REACH & RoHS  
COMPLIANT



Electrical:

- 1.Turn ratio:1~2:J1~J2=1CT:1CT(±2%).  
3~4:J3~J6=1CT:1CT(±2%).  
5~6:J4~J5=1CT:1CT(±2%).  
7~8:J7~J8=1CT:1CT(±2%).
- 2.OCL:350uH Min.at 100KHz 100mV 8mA DC.
- 3.Insertion Loss: -1.0 dB Max 1~100MHz.
- 4.Return loss: -18dB Min 1~30MHz;  
-14dB Min 30~60MHz.  
-12dB Min 60~80MHz.  
-10dB Min 80~100MHz.
- 5.Cross talk: -40dB Min 1~30MHz;  
-35dB Min 30~60MHz;  
-30dB Min 60~100MHz;
- 6.CMR: -30dB Min 1~100MHz;
- 7.Hi-Pot:2250V DC 6S 1mA PRI TO SEC

LED Specification

Standard LED Color	LED Wavelength	Foward(A)	Foward(V)
Green	568nm	20mA	1.85-2.45V
Yellow	585nm	20mA	1.7-2.2V

**VOOHU** 苏州沃虎电子科技有限公司  
Su Zhou Voohu Electronic Tech.Co.Ltd

TEL: +86 400 1048 018

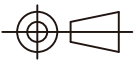
WEB: [WWW.WOHU-TEK.COM](http://WWW.WOHU-TEK.COM)

TITLE:  
RJ45 2X6 1000BASE  
PART NO.:  
SYT26Q042DB2A4D068

REMARK:

SIZE  
A4  
SACLE  
1:1  
SHEET  
2/3

UNITS  
MM[INCH]  
REV  
A0

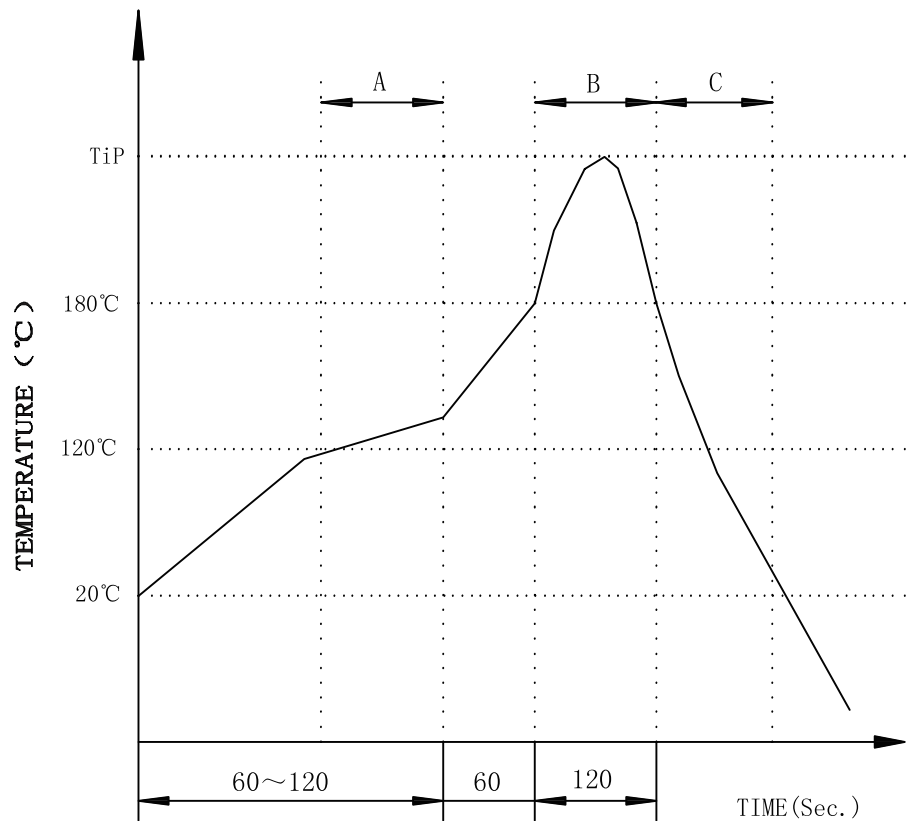


GENERAL TOLERANCES  
UNLESS SPECIFIED  
x±0.35  
.x±0.30  
.xx±0.25  
.xxx±0.10  
x°±3.0°  
.x°±2.0°  
.xx°±1.5°  
.xxx°±1.0°

APPROVED BY:  
Geoffrey.Song  
CHECKED BY:  
Elvis.Song  
DESIGND BY:  
Sunny.Xu

REACH & RoHS  
COMPLIANT

# PROFILE OF WAVE SOLDER



A.Preheating B.Soldering C.Gradual Cooling  
Tip temperature:260±5°C.  
Tip temperature time:5Sec Max.  
Tip melting point of Sn96.5/Ag3/Cu0.5:217°C.

Remarks: after wave soldering, the plastic positioning columns of the product which under the PCB will be slightly melted, but it won't affect its function.

**VOOHU** 苏州沃虎电子科技有限公司  
Su Zhou Voohu Electronic Tech.Co.Ltd

TITLE:  
RJ45 2X6 1000BASE  
PART NO.:  
SYT26Q042DB2A4D068

SIZE  
A4  
SACLE  
1:1  
REV  
A0

GENERAL TOLERANCES  
UNLESS SPECIFIED  
x±0.35  
.x±0.30  
xx°±3.0°  
.x°±2.0°

APPROVED BY:  
Geoffrey.Song  
CHECKED BY:  
Elvis.Song

TEL: +86 400 1048 018

WEB: [WWW.WOHU-TEK.COM](http://WWW.WOHU-TEK.COM)

REMARK:

SHEET  
3/3



.xx±0.25  
.xxx±0.10  
xx°±1.5°  
.xxx°±1.0°

DESIGND BY:  
Sunny.Xu