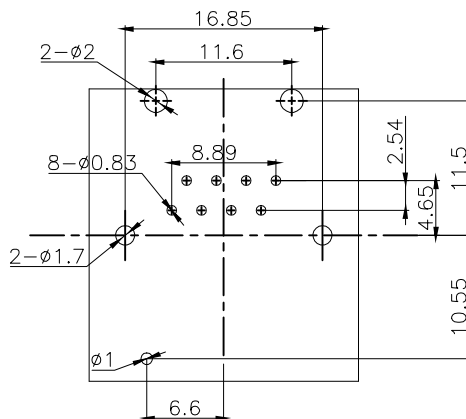
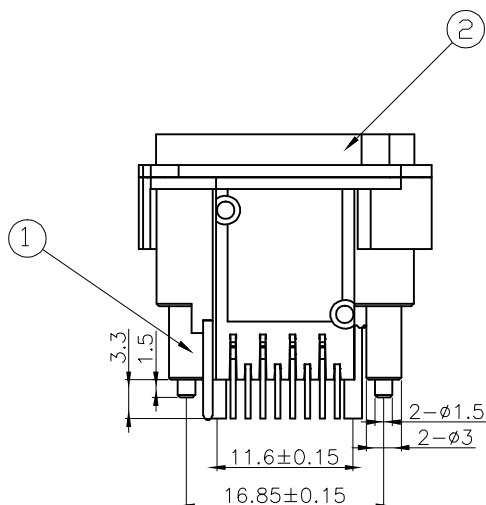
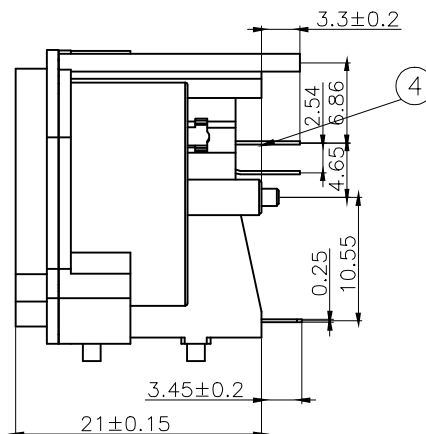
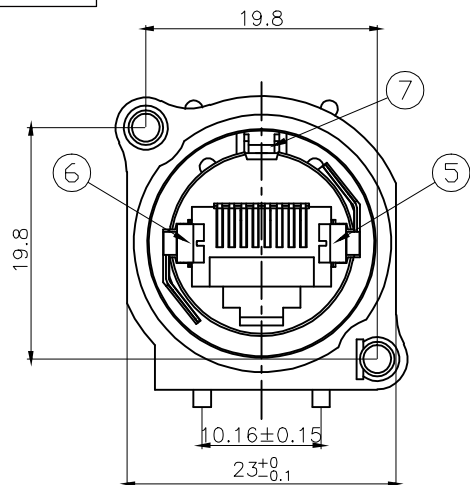


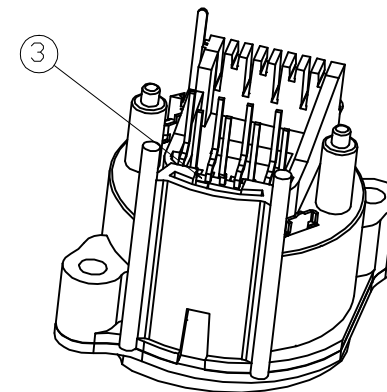
REACH & RoHS
COMPLIANT



PCB LAYOUT
RECOMMENDED

General Specification
Current Rating:1.5A DC /Contact, 20mA DC for LED signals
Voltage Rating:125V AC /Contact, 2.0 volts DC for LED signals
Operating Environment
Standard Temperature: -20℃~+70℃
Industrial Temperature: -40℃~+85℃
Humidity: 20~70%
Contact Resistance:≤30mΩ
Insulation Resistance:≥500MΩ
Dielectric Strength:500V AC/(50HZ)/Min
Mating And Unmating Force:3~20N
Durability:750 Cycles Min

Material Specification
Housing :Thermo-plastic, UL94V-0.
Contact :Alloy Copper
Shield :Alloy Copper
Please refer to the customer drawing when customer has specified



8	Right shrapnel	H62	1	MI	
7	Left shrapnel	H62	1	MI	
5	Unlocked shrapnel	manganese steel	1	NI	
4	back cover	LCP	1	BLACK	
3	panel	PBT	1	BLACK	
2	PIN INSERTION	PHOSPHOR BRONZE	8	3U"	
1	PLASTIC BASE	PA66	1	BLACK	
SERIAL NUMBER	NAME	MATERIALS	QUANTITY	COATING/ COLOUR	NOTES

TITLE:
no lock 180°

PART NO.:
WHLS80000013AB33

REMARK:

SIZE
A4

UNITS
MM[INCH]

SHEET
1/1



GENERAL TOLERANCES
UNLESS SPECIFIED

x±0.35	x°±3.0°
.x±0.30	.x°±2.0°
.xx±0.25	.xx°±1.5°
.xxx±0.10	.xxx°±1.0°

APPROVED BY:
Geoffrey.Song

CHECKED BY:
Elvis.Song

DESIGND BY:
Sunny.Xu

VOOHU 苏州沃虎电子科技有限公司
Su Zhou Voohu Electronic Tech.Co.Ltd

TEL: +86 400 1048 018

WEB: WWW.WOHU-TEK.COM