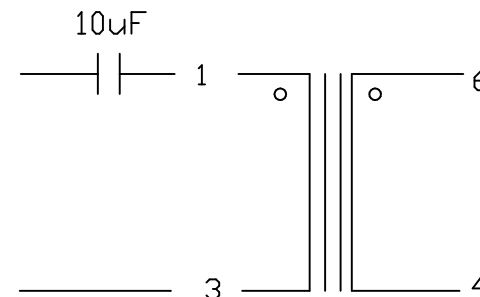
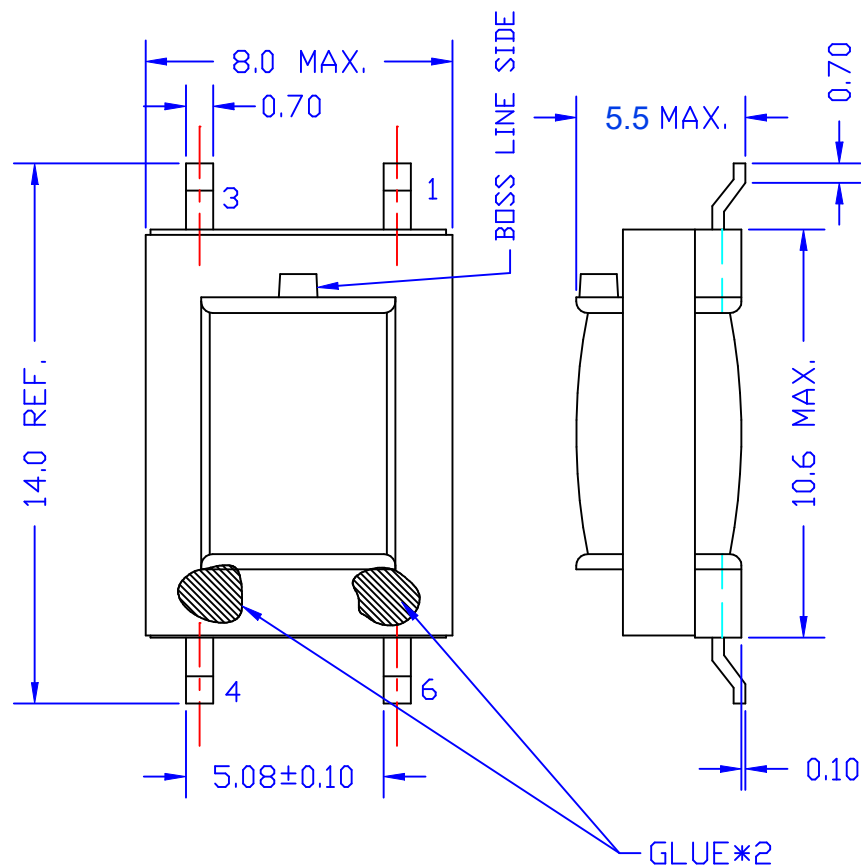


REACH & RoHS  
COMPLIANT



### ELECTRICAL CHARACTERISTICS:

1. D.C.R. PIN 1-3 = 105  $\Omega$ M  $\pm$ 10% PIN 4-6 = 105  $\Omega$ M  $\pm$ 10%.
2. INDUCTANCE (@ 250HZ, 0.5Vrms, PARALLEL) 1-3 = 3 H MIN.
3. IMPEDANCE (@ 1KHZ, 0dBm, 6-4 W/H 400  $\Omega$ M)  
1-3 = 600  $\Omega$ M $\pm$ 3%
4. INSERTION LOSS = 2.3 dB MAX.  
(@ 1KHZ, 0dBm, W/H 400  $\Omega$ M LOAD)
5. FREQ. RESP. (@ 300HZ TO 4KHZ, REF. 1KHZ) =  $\pm$ 0.12dB
6. RETURN LOSS: @300HZ = 28dB MIN. @1KHZ = 35dB MIN.  
@4KHZ = 35dB MIN.
7. TURN RATIO : 1-3:6-4 = 1  $\pm$ 1%
8. HI-POT = 1250 VAC, 1mA, 2SEC. (PRI.-SEC.)

TITLE:

TRANSFORMER

SIZE  
A4

UNITS  
MM[INCH]

GENERAL TOLERANCES  
UNLESS SPECIFIED

APPROVED BY:

Geoffrey.Song

PART NO.:

WHTT4002

SCALE  
1:1

REV  
A0

x $\pm$ 0.35

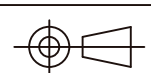
x $^{\circ}$  $\pm$ 3.0 $^{\circ}$

CHECKED BY:

Elvis.Song

REMARK:

SHEET  
1/1



.xx $\pm$ 0.25

.xx $^{\circ}$  $\pm$ 1.5 $^{\circ}$

DESIGNED BY:

Sunny.Xu

**VOOHU** 苏州沃虎电子科技有限公司  
Su Zhou Voohu Electronic Tech.Co.Ltd

TEL: +86 400 1048 018

WEB: [WWW.WOHU-TEK.COM](http://WWW.WOHU-TEK.COM)